

# 180° Intruder deterrence.

## Professional AI Series: 180° Fixed lens AI active deterrence turrets in 8.0MP

The Professional AI Series utilises the latest in AI machine learning technology to identify people & vehicles with superior accuracy and reliability. The active deterrence range incorporates AI detection and a variety of in-camera features to deter intruders. Upon a human or vehicle detection event, these cameras can trigger a white LED spotlight for security lighting, a flashing blue/red LED strobe and a loud siren with programmable message/tone, to deter intruders. They are ideal for active security across a variety of residential and commercial applications.

- Stream up to 8.0MP (4096 x 1860) at 20fps
- Activates spotlight, flashing light & siren, switching from IR to colour footage in response to alarm events
- 24/7 Colour low light footage as low as 0.005lx
- Up to 25m infrared, BLC/HLC & true WDR (120dB)
- Intelligent AI detection to identify people & vehicles
- Next-Gen Smart Motion Detection (SMD 4.0) & Perimeter Protection to prevent false alarms, using VIP Vision NVRs
- Dual cameras in one housing for a 180° field of view
- IP67 weather rated housing for outdoor use



180° Coverage Surveillance



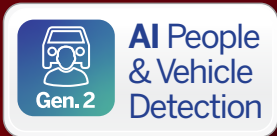
Spotlight, Siren & Blue/Red Strobe



AI Human & Vehicle Detection

Specifications		8.0MP Fixed 180° AI Deterrence Turret	
<b>Ordering Information</b>		<b>VSIPP-8DD-ID3</b>	
<b>Camera</b>	<b>Image Sensor</b>	Dual 1/2.7" 4.0MP Progressive Scan CMOS	
	<b>Effective Pixels</b>	4096 (H) x 1860 (V)	
	<b>RAM / ROM</b>	1GB / 128MB	
	<b>Min Illumination</b>	0.005 Lux/F1.4 (Color), 0.0005 lux/F1.4 (B/W, 30 IRE), 0 lux (IR)	
	<b>Electronic Shutter</b>	1/3 ~ 1/100,000s	
	<b>S/N Ratio</b>	> 56dB	
	<b>Infrared System</b>	2 x Infrared LED, 25m range, Auto/manual on/off control	
	<b>LED Illumination</b>	2 x Spotlight (Warm White), 20m range, 1 x Red & Blue Alarm Light	
	<b>Lens</b>	<b>Lens / Iris</b>	2.8mm F1.4 Fixed Lens
<b>Field of View</b>		Horizontal: 180°, Vertical: 86°	
<b>Focus</b>		Auto Focus / 0.8m Min. Focus Distance	
<b>DORI</b>	<b>Detect (25px/m)</b>	50m	
	<b>Observe (63px/m)</b>	20m	
	<b>Recognise (125px/m)</b>	10m	
	<b>Identify (250px/m)</b>	5m	
<b>Video</b>	<b>Resolution</b>	8.0MP (4096 x 1860) to 960 x 432	
	<b>Frame Rate</b>	<b>Main</b>	8.0MP (1 ~ 20fps)
		<b>Sub</b>	1200 x 530 (1 ~ 20fps)
		<b>Third</b>	1920 x 860 (1 ~ 20fps)
	<b>Video Compression</b>	H.265+ / H.265 / H.264+ / H.264 / H.264B / MJPEG	
	<b>Bit Rate</b>	H.265: 6 ~ 16384Kbps / H.264: 6 ~ 16384Kbps	
	<b>Bit Rate Control</b>	Constant bit rate (CBR) / Variable bit rate (VBR)	
	<b>Day/Night</b>	Auto (ICR) / Colour / B&W	
	<b>Lighting Compensation</b>	BLC / HLC / WDR (120dB)	
	<b>Smart Scene Adaptive</b>	Yes	
	<b>White Balance</b>	Auto / Natural / Street Lamp / Outdoor / Manual / Regional Custom	
	<b>Gain Control</b>	Auto	
<b>Noise Reduction</b>	3D DNR		
<b>IVS</b>	<b>Video Functions</b>	Motion Detection (4 zones), Region of Interest (4 zones), Privacy Masking (4 zones), Defog <b>Event Triggers:</b> Motion Detection, Perimeter Protection, Video Tampering, Scene Changing, Network Disconnection, IP Address Conflict, Illegal Access, Storage Anomaly	
	<b>AI Functions</b>	<b>Perimeter Protection:</b> People and vehicle detection using tripwire or intrusion rules	
	<b>Intelligent search</b>	Search people or vehicle detection events (Perimeter Protection)	
<b>Network</b>	<b>Ethernet</b>	RJ-45 (10/100Base-T)	
	<b>Protocol</b>	IPv4; IPv6; HTTP; TCP; UDP; ARP; RTP; RTSP; RTCP; RTMP; SMTP; FTP; SFTP; DHCP; DNS; DDNS; QoS; UPnP; NTP; Multicast; ICMP; IGMP; NFS; SAMBA; PPPoE; SNMP; P2P	
	<b>Streaming Method</b>	Multicast	
	<b>Max. User Access</b>	20 Users (Total bandwidth: 64MB)	
<b>Interface</b>	<b>Video Interface</b>	N/A	
	<b>Audio Interface</b>	Built-in Mic & Built-in Speaker, 1 Audio In/Output (RCA) / Audio Compression - PCM; G.711a; G.711Mu; G.726; G.723	
	<b>Alarm Interface</b>	1 channel in: 5mA 3-5VDC / 1 channel out: 300mA 12VDC	
	<b>RS485</b>	N/A	
	<b>Edge Storage</b>	MicroSD Card (up to 256GB) / NAS / FTP / SFTP	
<b>Environmental</b>	<b>Interoperability</b>	ONVIF (Profile S, Profile G, Profile T) / CGI	
	<b>Power Supply</b>	12VDC / PoE (802.3af)	
	<b>Power Consumption</b>	Deterrence: <8.7W (12VDC), <10.85W (PoE)	
	<b>Operating Conditions</b>	-40°C ~ +60°C / ≤95% RH	
	<b>Ingress Protection</b>	IP67	
	<b>Vandal Resistance</b>	N/A	
	<b>Housing</b>	Metal	
	<b>Pan/Tilt/Rotation</b>	Pan: 0° ~ 360°, Tilt: 0° ~ 78°, Rotation: 0° ~ 360°	
	<b>Dimensions</b>	Ø 122mm x 135mm	
	<b>Net Weight</b>	0.99kg	
<b>Accessories</b>		<b>Junction Box</b>	<b>Ceiling Mount</b>
		VSBKTA137	VSBKTA109 + VSBKTB220C
		<b>Wall Mount</b>	<b>Pole Mount</b>
		VSBKTB205W-E	VSBKTB205W-E + VSBKTA152E

Your local VIP Vision™ IP solutions professional:



# 180° Intruder deterrence.

## Professional AI Series: 180° Fixed lens AI active deterrence bullet in 8.0MP

The Professional AI Series utilises the latest in AI machine learning technology to identify people & vehicles with superior accuracy and reliability. The active deterrence range incorporates AI detection and a variety of in-camera features to deter intruders. Upon a human or vehicle detection event, these cameras can trigger a white LED spotlight for security lighting, a flashing blue/red LED strobe and a loud siren with programmable message/tone, to deter intruders. They are ideal for active security across a variety of residential and commercial applications.

- Stream up to 8.0MP (4096 x 1860) at 20fps
- Activates spotlight, flashing light & siren, switching from IR to colour footage in response to alarm events
- 24/7 Colour low light footage as low as 0.005lx
- Up to 25m infrared, BLC/HLC & true WDR (120dB)
- Intelligent AI detection to identify people & vehicles
- Next-Gen Smart Motion Detection (SMD 4.0) & Perimeter Protection to prevent false alarms, using VIP Vision NVRs
- Dual cameras in one housing for a 180° field of view
- IP67 weather rated housing for outdoor use

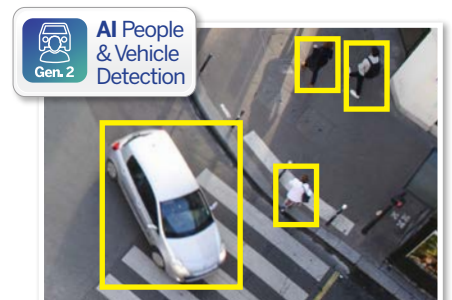


180°

180° Coverage Surveillance



Spotlight, Siren & Blue/Red Strobe



AI Human & Vehicle Detection

Specifications		8.0MP Fixed 180° AI Deterrence Bullet		
<b>Ordering Information</b>		<b>VSIPP-8BD-ID3</b>		
<b>Camera</b>	Image Sensor	Dual 1/2.7" 8.0MP Progressive Scan CMOS		
	Effective Pixels	4096 (H) x 1860 (V)		
	RAM / ROM	1GB / 128MB		
	Min Illumination	0.005 Lux/F1.4 (Color), 0.0005 lux/F1.4 (B/W, 30 IRE), 0 lux (IR)		
	Electronic Shutter	1/3 ~ 1/100,000s		
	S/N Ratio	> 56dB		
	Infrared System	2 x Infrared LED, 25m range, Auto/manual on/off control		
	LED Illumination	2 x Spotlight (Warm White), 1 x Red & Blue Alarm Light		
	<b>Lens</b>	Lens / Iris	2.8mm F1.4 Fixed Lens	
		Field of View	Horizontal: 180°, Vertical: 86°	
Focus		Auto Focus / 0.8m Min. Focus Distance		
<b>DORI</b>	Detect (25px/m)	51m		
	Observe (63px/m)	20m		
	Recognise (125px/m)	10m		
	Identify (250px/m)	5m		
<b>Video</b>	Resolution	8.0MP (4096 x 1860) to (960 x 432)		
	Frame Rate	Main	8.0MP (1 ~ 20fps)	
		Sub	1200 x 530 (1 ~ 20fps)	
		Third	1920 x 860 (1 ~ 20fps)	
	Video Compression	H.265+ / H.265 / H.264+ / H.264 / H.264B / MJPEG		
	Bit Rate	H.265: 6 ~ 16384Kbps / H.264: 6 ~ 16384Kbps		
	Bit Rate Control	Constant bit rate (CBR) / Variable bit rate (VBR)		
	Day/Night	Auto (ICR) / Color / B&W		
	Lighting Compensation	BLC / HLC / WDR (120dB)		
	Smart Scene Adaptive	Yes		
	White Balance	Auto / Natural / Street Lamp / Outdoor / Manual		
	Gain Control	Auto		
	Noise Reduction	3D DNR		
<b>IVS</b>	Video Functions	Motion Detection (4 zones), Region of Interest (4 zones), Privacy Masking (4 zones), Smart Illumination, Defog <b>Event Triggers:</b> Motion Detection, Perimeter Protection, Video Tampering, Scene Changing, Network Disconnection, IP Address Conflict, Illegal Access, Storage Anomaly		
	AI Functions	<b>Perimeter Protection:</b> People and vehicle detection using tripwire or intrusion rules		
	Intelligent search	Search people or vehicle detection events (Perimeter Protection)		
<b>Network</b>	Ethernet	RJ-45 (10/100Base-T)		
	Protocol	IPv4; IPv6; HTTP; TCP; UDP; ARP; RTP; RTSP; RTCP; RTMP; SMTP; FTP; SFTP; DHCP; DNS; DDNS; QoS; UPnP; NTP; Multicast; ICMP; IGMP; NFS; SAMBA; PPPoE; SNMP; P2P		
	Streaming Method	Multicast		
	Max. User Access	20 Users (Total bandwidth: 64MB)		
<b>Interface</b>	Video Interface	N/A		
	Audio Interface	Built-in Mic & Built-in Speaker, 1 Audio In/Output (RCA) / Audio Compression - PCM; G.711a; G.711Mu; G.726; G.723		
	Alarm Interface	1 channel in: 5mA 3-5VDC / 1 channel out: 300mA 12VDC		
	RS485	N/A		
	Edge Storage	MicroSD Card (up to 256GB) / NAS / FTP / SFTP		
	Interoperability	ONVIF (Profile S, Profile G, Profile T) / CGI		
<b>Environmental</b>	Power Supply	Deterrence: <9W (12VDC), <10.35W (PoE)		
	Power Consumption	<9W, <10.3W (PoE)		
	Operating Conditions	-40°C ~ +60°C / ≤95% RH		
	Ingress Protection	IP67		
	Vandal Resistance	N/A		
	Housing	Metal		
	Pan/Tilt/Rotation	Pan: 0° ~ 360°, Tilt: 0° ~ 78°, Rotation: 0° ~ 360°		
Dimensions	Ø183mm x 99mm x 78mm			
Net Weight	0.69kg			
<b>Accessories</b>			Junction Box	
			VSBKTA130E	

Your local VIP Vision™ IP solutions professional:

AI People & Vehicle Detection

Starlight Camera



**4.0**  
MEGAPIXEL

# Panoramic & AI combined.

## Professional AI Series: AI panoramic mini bullet in 4.0MP

Capture entire scenes and perform the role of multiple cameras with the VIP Vision Panoramic Series. Control a 180-degree panorama with virtual PTZ functions to keep watch over driveways, parking lots and warehouse floors, even with low-light colour. Search playback and receive alerts with AI Person and Vehicle Detection modes, transforming the way you use your surveillance system.

- Stream up to 4.0MP (2688 x 1520) at 25fps
- 2.1mm panoramic lens for 170° field of view (Lens Distortion Control enabled; 180° when disabled)
- Back/highlight compensation & true WDR (120dB)
- 20m infrared range & virtual PTZ control
- Starlight sensor for superb low-light performance
- Intelligent AI detection to identify people & vehicles
- Smart Motion Detection (SMD+) & Perimeter Protection for AI alerts and to prevent false alarms
- MicroSD slot for recording at the edge up to 256GB
- 3D digital noise reduction & auto white balance
- IP67 weather rated housing for outdoor use

4MP 25fps  
180° FOV  
0.001lx

**Superb Image Performance**

**180°**

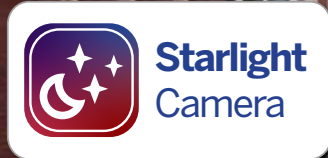
**Wide-Angle View & Infrared**

**Smart Person & Vehicle Detection**

Specifications		4.0MP AI Panoramic Bullet	
<b>Ordering Information</b>		<b>VSIPP-4BIRW-I</b>	
<b>Camera</b>	Image Sensor	1/2.7" 4.0MP Progressive Scan CMOS	
	Effective Pixels	2880 (H) x 1620 (V)	
	RAM / ROM	512MB / 128MB	
	Min Illumination	0.01 Lux / F1.6 (Color), 0.001 lux / F2.0 (B/W, 30 IRE), 0 lux (IR on)	
	S/N Ratio	> 56dB	
	Infrared System	3 x Infrared LED, 20m range, auto	
	<b>Lens</b>	Lens / Iris	2.1mm F2.0 Fixed Lens with Fixed Iris
Field of View		LDC (Lens Distortion Control), enabled by default   Horizontal: 170°, Vertical: 75°, Diagonal: 175° Horizontal: 180°, Vertical: 78°, Diagonal: 180°	
Focus		Auto Focus / 0.6m Min. Focus Distance	
<b>DORI</b>	Detect (25px/m)	52m	
	Observe (63px/m)	21m	
	Recognise (125px/m)	10m	
	Identify (250px/m)	5m	
<b>Video</b>	Resolution	5.0 MP (2880 x 1620) / 4.0MP (2688 x 1520) to CIF (352 x 288)	
	Frame Rate	Main	5.0MP (1 ~ 20fps) / 4.0MP (1 ~ 25fps)
		Sub	D1 (1 ~ 25fps)
		Third	1080p (1 ~ 25fps)
	Video Compression	H.265/H.264/H.264H/H.264B/MJPEG	
	Bit Rate	H.264/H.265: 3 ~ 8192 kbps	
	Bit Rate Control	Constant bit rate (CBR) / Variable bit rate (VBR)	
	Day/Night	Auto (ICR) / Color / B&W	
	Lighting Compensation	BLC / HLC / WDR (120dB)	
	Smart Scene Adaptive	N/A	
	White Balance	Auto / Natural / Street Lamp / Outdoor / Manual / Regional Custom	
	Gain Control	Auto / Manual	
	Noise Reduction	3D NR	
	Picture Control	Mirror / Flip (0°, 90°, 180°, 270°) (4.0MP supports 90° & 270° at 1080p resolution)	
<b>IVS</b>	Intelligent Functions	Motion Detection (4 zones), Region of Interest (4 zones), Privacy Masking (8 areas), Smart Infrared, Abandoned Object, Moving Object	
	Perimeter Protection	Tripwire & Intrusion (Add recognition of humans & vehicles), Fast Moving Detection, Loitering Detection, Parking & Gathering Detection	
	Face Detection	N/A	
	Face Attributes	N/A	
	People Counting	N/A	
	Heat Map	N/A	
	Event Trigger	Motion Detection, Video Tampering, Scene Changing, Network Disconnection, IP Address Conflict, Illegal Access	
Intelligent Search	Via NVR Smart Search / Search tripwire/intrusion events by people or vehicle, Search footage by face image and face attributes		
<b>Network</b>	Ethernet	RJ-45 (10/100Base-T)	
	Protocol	IPv4; IPv6; HTTP; HTTPS; TCP; UDP; ARP; RTP; RTSP; RTCP; RTMP; SMTP; FTP; SFTP; DHCP; DNS; DDNS; QoS; UPnP; NTP; Multicast; ICMP; IGMP; NFS; SAMBA; PPPoE; 802.1x; SNMP	
	Streaming Method	Multicast	
	Max. User Access	20 Users	
<b>Interface</b>	Video Interface	N/A	
	Audio Interface	1 input (RCA Port), 1 output (RCA Port) / Audio Compression: G.711a; G.711Mu; G.726; G.723	
	Alarm Interface	1 channel in: 5mA 3VDC / 1 channel out: 1000mA 30VDC or 500mA 50V DC	
	RS485	N/A	
	Edge Storage	MicroSD Card (up to 256GB) / NAS / FTP / SFTP	
	Interoperability	ONVIF / P2P / CGI	
<b>Environmental</b>	Power Supply	12VDC / PoE (802.3af)	
	Power Consumption	<6.5W	
	Operating Conditions	-40°C ~ +60°C, ≤95% RH	
	Ingress Protection	IP67	
	Vandal Resistance	N/A	
	Housing	Metal	
	Pan/Tilt/Rotation	Pan: 0° ~ 360°, Tilt: 0° ~ 90°, Rotation: 0° ~ 360°	
	Dimensions	249.3 mm x 90.7 mm x 90.4 mm	
Net Weight	820g		

Applications		
Wall Mount	Junction Box	Pole Mount
VSBKTA135	VSBKTA135 or VSBKTA130E	VSBKTA135 + VSBKTA152E

Your local VIP Vision™ IP solutions professional:



**4.0**  
MEGAPIXEL

# Panoramic & AI combined.

## Professional AI Series: AI panoramic vandal dome in 4.0MP

Capture entire scenes and perform the role of multiple cameras with the VIP Vision Panoramic Series. Control a 180-degree panorama with virtual PTZ functions to keep watch over driveways, parking lots and warehouse floors, even with low-light colour. Search playback and receive alerts with AI Person and Vehicle Detection modes, transforming the way you use your surveillance system.

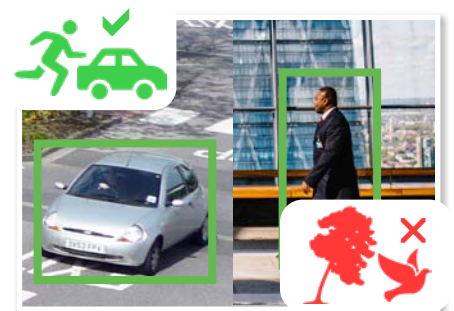
- Stream up to 4.0MP (2688 x 1520) at 25fps
- 2.1mm panoramic lens for 170° field of view (Lens Distortion Control enabled; 180° when disabled)
- Back/highlight compensation & true WDR (120dB)
- 15m infrared range & virtual PTZ control
- Starlight sensor for superb low-light performance
- Intelligent AI detection to identify people & vehicles
- Smart Motion Detection (SMD+) & Perimeter Protection for AI alerts and to prevent false alarms
- MicroSD slot for recording at the edge up to 256GB
- 3D digital noise reduction & auto white balance
- IP67 weather & IK10 vandal rated for outdoor use



Superb Image Performance



Wide-Angle View & Infrared



Smart Person & Vehicle Detection

Specifications		4.0MP AI Panoramic Dome	
<b>Ordering Information</b>		<b>VSIPP-4DIRW-I</b>	
<b>Camera</b>	Image Sensor	1/2.7" 4.0MP Progressive Scan CMOS	
	Effective Pixels	2880 (H) x 1620 (V)	
	RAM / ROM	512MB / 128MB	
	Min Illumination	0.01 Lux / F1.6 (Color), 0.001 lux / F2.0 (B/W, 30 IRE), 0 lux (IR on)	
	S/N Ratio	> 56dB	
	Infrared System	2 x Infrared LED, 15m range, auto	
<b>Lens</b>	Lens / Iris	2.1mm F2.0 Fixed Lens with Fixed Iris	
	Field of View	LDC (Lens Distortion Control), enabled by default   Horizontal: 170°, Vertical: 75°, Diagonal: 175° Horizontal: 180°, Vertical: 78°, Diagonal: 180°	
	Focus	Auto Focus / 0.6m Min. Focus Distance	
<b>DORI</b>	Detect (25px/m)	52m	
	Observe (63px/m)	21m	
	Recognise (125px/m)	10m	
	Identify (250px/m)	5m	
<b>Video</b>	Resolution	5.0 MP (2880 x 1620) / 4.0MP (2688 x 1520) to CIF (352 x 288)	
	Frame Rate	Main	5.0MP (1 ~ 20fps) / 4.0MP (1 ~ 25fps)
		Sub	D1 (1 ~ 25fps)
		Third	1080p (1 ~ 25fps)
	Video Compression	H.265/H.264/H.264H/H.264B/MJPEG	
	Bit Rate	H.264/H.265: 3 ~ 8192 kbps	
	Bit Rate Control	Constant bit rate (CBR) / Variable bit rate (VBR)	
	Day/Night	Auto (ICR) / Color / B&W	
	Lighting Compensation	BLC / HLC / WDR (120dB)	
	Smart Scene Adaptive	N/A	
	White Balance	Auto / Natural / Street Lamp / Outdoor / Manual / Regional Custom	
	Gain Control	Auto / Manual	
	Noise Reduction	3D NR	
	Picture Control	Mirror / Flip (0°, 90°, 180°, 270°) (4.0MP supports 90° & 270° at 1080p resolution)	
<b>IVS</b>	Intelligent Functions	Motion Detection (4 zones), Region of Interest (4 zones), Privacy Masking (8 areas), Smart Infrared, Abandoned Object, Moving Object	
	Perimeter Protection	Tripwire & Intrusion (Add recognition of humans & vehicles), Fast Moving Detection, Loitering Detection, Parking & Gathering Detection	
	Face Detection	N/A	
	Face Attributes	N/A	
	People Counting	N/A	
	Heat Map	N/A	
	Event Trigger	Motion Detection, Video Tampering, Scene Changing, Network Disconnection, IP Address Conflict, Illegal Access	
<b>Network</b>	Intelligent Search	Via NVR Smart Search / Search tripwire/intrusion events by people or vehicle, Search footage by face image and face attributes	
	Ethernet	RJ-45 (10/100Base-T)	
	Protocol	IPv4; IPv6; HTTP; HTTPS; TCP; UDP; ARP; RTP; RTSP; RTCP; RTMP; SMTP; FTP; SFTP; DHCP; DNS; DDNS; QoS; UPnP; NTP; Multicast; ICMP; IGMP; NFS; SAMBA; PPPoE; 802.1x; SNMP	
	Streaming Method	Multicast	
<b>Interface</b>	Max. User Access	20 Users	
	Video Interface	N/A	
	Audio Interface	1 input (RCA Port), 1 output (RCA Port) / Audio Compression: G.711a; G.711Mu; G.726; G.723	
	Alarm Interface	1 channel in: 5mA 3VDC / 1 channel out: 1000mA 30VDC or 500mA 50V DC	
	RS485	N/A	
	Edge Storage	MicroSD Card (up to 256GB) / NAS / FTP / SFTP	
	Interoperability	ONVIF / P2P / CGI	
<b>Environmental</b>	Power Supply	12VDC / PoE (802.3af)	
	Power Consumption	<7.7W	
	Operating Conditions	-40°C ~ +60°C, ≤95% RH	
	Ingress Protection	IP67	
	Vandal Resistance	IK10	
	Housing	Metal	
	Pan/Tilt/Rotation	Pan: 0° ~ 355°, Tilt: 0° ~ 80°, Rotation: 0° ~ 355°	
Dimensions	Ø122.0 mm x 94 mm		
Net Weight	550 g		

Applications			
Wall Mount	Junction Box	Pole Mount	Ceiling Mount
VSBKT203W	VSBKTA137	VSBKT203W + VSBKTA152E	VSBKT220C

Your local VIP Vision™ IP solutions professional: