

# AI detects & deters intruders.

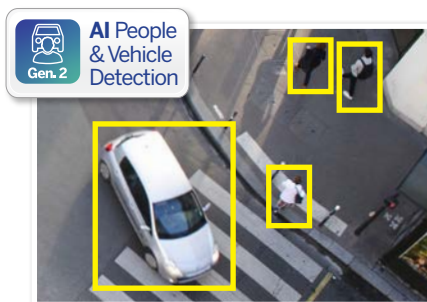
## Professional AI Series: Fixed lens AI active deterrence turrets in 6.0MP and 8.0MP

The Professional AI Series utilises the latest in AI machine learning technology to identify people & vehicles with superior accuracy and reliability. The active deterrence range incorporates AI detection and a variety of in-camera features to deter intruders. Upon a human or vehicle detection event, these cameras can trigger a white LED spotlight for security lighting, a flashing blue/red LED strobe and a loud siren with programmable message/tones, to deter intruders. They are ideal for active security across a variety of residential and commercial applications.

- Stream up to 8.0MP (3840 x 2160) at 25fps
- Activates spotlight, flashing light & siren, switching from IR to colour footage in response to alarm events
- 24/7 Colour low light footage as low as 0.003lx
- Up to 30m infrared, BLC/HLC & true WDR (120dB)
- Intelligent AI detection to identify people & vehicles
- Next-Gen Smart Motion Detection (SMD 4.0) & Perimeter Protection to prevent false alarms, using VIP Vision NVRs
- AI SSA detects/adjusts exposure to ensure clear video.
- IP67 weather rated housing for outdoor use



Spotlight, Siren & Blue/Red Strobe



AI Human & Vehicle Detection



AI Adapts Scene for Best Picture

Specifications	6.0MP Fixed AI Deterrence Turret	8.0MP Fixed AI Deterrence Turret								
<b>Ordering Information</b>	<b>VSIPP-6DG-ID3</b>	<b>VSIPP-8DG-ID3 VSIPP-8DG-ID3-B</b>								
<b>Image Sensor</b>	1/2.7" 6.0MP Progressive Scan CMOS	1/2.8" 8.0MP Progressive Scan CMOS								
<b>Effective Pixels</b>	3200 (H) x 1800 (V)	3840 (H) x 2160 (V)								
<b>RAM / ROM</b>	512MB / 128MB									
<b>Min Illumination</b>	0.003 Lux/F1.0 (Color), 0.0003 lux/F1.0 (B/W, 30 IRE), 0 lux (IR)	0.004 Lux/F1.0 (Color), 0.0004 lux/F1.0 (B/W, 30 IRE), 0 lux (IR)								
<b>Electronic Shutter</b>	1/3 ~ 1/100,000s									
<b>S/N Ratio</b>	> 56dB									
<b>Infrared System</b>	1 x Infrared LED, 30m range, Auto/manual on/off control									
<b>LED Illumination</b>	1 x Spotlight (Warm White), 1 x Red & Blue Alarm Light									
<b>Lens / Iris</b>	2.8mm F1.0 Fixed Lens	2.8mm F1.0 Fixed Lens								
<b>Field of View</b>	Horizontal: 97°, Vertical: 70°, Diagonal: 128°	Horizontal: 106°, Vertical: 55°, Diagonal: 125°								
<b>Focus</b>	Auto Focus / 1.5m Min. Focus Distance	Auto Focus / 2m Min. Focus Distance								
<b>DORI</b>										
<b>Detect (25px/m)</b>	66m	91m								
<b>Observe (63px/m)</b>	26m	36m								
<b>Recognise (125px/m)</b>	13m	18m								
<b>Identify (250px/m)</b>	7m	9m								
<b>Resolution</b>	6.0MP (3200 x 1800) to CIF (352 x 288)	8.0MP (3840 x 2160) to CIF (352 x 288)								
<b>Frame Rate</b>	Main: 6.0MP (1 ~ 25fps)	8.0MP (1 ~ 25fps)								
	Sub: 704 x 576 (1 ~ 25fps)									
	Third: 1080p (1 ~ 25fps)									
<b>Video Compression</b>	H.265+ / H.265 / H.264+ / H.264 / H.264B / MJPEG									
<b>Bit Rate</b>	H.265: 32 ~ 20480Kbps / H.264: 12 ~ 20480Kbps									
<b>Bit Rate Control</b>	Constant bit rate (CBR) / Variable bit rate (VBR)									
<b>Day/Night</b>	Auto (ICR) / Colour / B&W									
<b>Lighting Compensation</b>	BLC / HLC / WDR (120dB)									
<b>Smart Scene Adaptive</b>	SSA									
<b>White Balance</b>	Auto / Natural / Street Lamp / Outdoor / Manual									
<b>Gain Control</b>	Auto / Manual									
<b>Noise Reduction</b>	3D DNR									
<b>Picture Control</b>	Mirror / Flip (0°, 90°, 180°, 270°)									
<b>Video Functions</b>	Motion Detection (4 zones), Region of Interest (4 zones), Privacy Masking (4 zones), Smart Illumination, Defog, Object Abandoned / Missing, Heat Map <b>Event Triggers:</b> Motion Detection, Perimeter Protection, Video Tampering, Scene Changing, Network Disconnection, IP Address Conflict, Illegal Access, Storage Anomaly									
<b>AI Functions</b>	<b>Perimeter Protection:</b> People and vehicle detection using tripwire or intrusion rules <b>Loitering detection:</b> People gathering and parking detection									
<b>Intelligent search</b>	Search people or vehicle detection events (Perimeter Protection)									
<b>Network</b>	RJ-45 (10/100Base-T)									
<b>Protocol</b>	IPv4; IPv6; HTTP; TCP; UDP; ARP; RTP; RTSP; RTCP; RTMP; SMTP; FTP; SFTP; DHCP; DNS; DDNS; QoS; UPnP; NTP; Multicast; ICMP; IGMP; NFS; SAMBA; PPPoE; SNMP									
<b>Streaming Method</b>	Unicast / Multicast									
<b>Max. User Access</b>	20 Users (Total bandwidth: 72MB)									
<b>Video Interface</b>	N/A									
<b>Audio Interface</b>	Built-in Mic & Built-in Speaker, 1 Audio In/Output (RCA) / Audio Compression - PCM; G.711a; G.711Mu; G.726; G.723									
<b>Alarm Interface</b>	1 channel in: 5mA 3-5VDC / 1 channel out: 300mA 12VDC									
<b>RS485</b>	N/A									
<b>Edge Storage</b>	MicroSD Card (up to 256GB) / NAS / FTP / SFTP									
<b>Interoperability</b>	ONVIF (Profile S, Profile G, Profile T) / P2P / CGI / Milestone									
<b>Power Supply</b>	12VDC / PoE (802.3af)									
<b>Power Consumption</b>	<8.8W	<10.2W								
<b>Operating Conditions</b>	-40°C ~ +60°C / ≤95% RH									
<b>Ingress Protection</b>	IP67									
<b>Vandal Resistance</b>	N/A									
<b>Housing</b>	Metal									
<b>Pan/Tilt/Rotation</b>	Pan: 0° ~ 360°, Tilt: 0° ~ 78°, Rotation: 0° ~ 360°									
<b>Dimensions</b>	Ø122mm x 111mm									
<b>Net Weight</b>	0.75kg									
<b>Accessories</b>		<table border="1"> <tr> <td><b>Junction Box</b></td> <td><b>Ceiling Mount</b></td> </tr> <tr> <td>VSBKTA137 or VSBKTA130E</td> <td>VSBKTA109 + VSBKTB220C</td> </tr> <tr> <td><b>Wall Mount</b></td> <td><b>Pole Mount</b></td> </tr> <tr> <td>VSBKTB205WE or VSBKTB203W</td> <td>VSBKTB205W + VSBKTA152E</td> </tr> </table>	<b>Junction Box</b>	<b>Ceiling Mount</b>	VSBKTA137 or VSBKTA130E	VSBKTA109 + VSBKTB220C	<b>Wall Mount</b>	<b>Pole Mount</b>	VSBKTB205WE or VSBKTB203W	VSBKTB205W + VSBKTA152E
<b>Junction Box</b>	<b>Ceiling Mount</b>									
VSBKTA137 or VSBKTA130E	VSBKTA109 + VSBKTB220C									
<b>Wall Mount</b>	<b>Pole Mount</b>									
VSBKTB205WE or VSBKTB203W	VSBKTB205W + VSBKTA152E									

Your local VIP Vision™ IP solutions professional:



# 180° Intruder deterrence.

## Professional AI Series: 180° Fixed lens AI active deterrence turrets in 8.0MP

The Professional AI Series utilises the latest in AI machine learning technology to identify people & vehicles with superior accuracy and reliability. The active deterrence range incorporates AI detection and a variety of in-camera features to deter intruders. Upon a human or vehicle detection event, these cameras can trigger a white LED spotlight for security lighting, a flashing blue/red LED strobe and a loud siren with programmable message/tone, to deter intruders. They are ideal for active security across a variety of residential and commercial applications.

- Stream up to 8.0MP (4096 x 1860) at 20fps
- Activates spotlight, flashing light & siren, switching from IR to colour footage in response to alarm events
- 24/7 Colour low light footage as low as 0.005lx
- Up to 25m infrared, BLC/HLC & true WDR (120dB)
- Intelligent AI detection to identify people & vehicles
- Next-Gen Smart Motion Detection (SMD 4.0) & Perimeter Protection to prevent false alarms, using VIP Vision NVRs
- Dual cameras in one housing for a 180° field of view
- IP67 weather rated housing for outdoor use



180° Coverage Surveillance



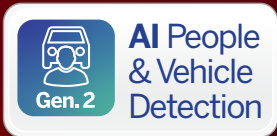
Spotlight, Siren & Blue/Red Strobe



AI Human & Vehicle Detection

Specifications		8.0MP Fixed 180° AI Deterrence Turret	
<b>Ordering Information</b>		<b>VSIPP-8DD-ID3</b>	
<b>Camera</b>	<b>Image Sensor</b>	Dual 1/2.7" 4.0MP Progressive Scan CMOS	
	<b>Effective Pixels</b>	4096 (H) x 1860 (V)	
	<b>RAM / ROM</b>	1GB / 128MB	
	<b>Min Illumination</b>	0.005 Lux/F1.4 (Color), 0.0005 lux/F1.4 (B/W, 30 IRE), 0 lux (IR)	
	<b>Electronic Shutter</b>	1/3 ~ 1/100,000s	
	<b>S/N Ratio</b>	> 56dB	
	<b>Infrared System</b>	2 x Infrared LED, 25m range, Auto/manual on/off control	
	<b>LED Illumination</b>	2 x Spotlight (Warm White), 20m range, 1 x Red & Blue Alarm Light	
	<b>Lens</b>	<b>Lens / Iris</b>	2.8mm F1.4 Fixed Lens
<b>Field of View</b>		Horizontal: 180°, Vertical: 86°	
<b>Focus</b>		Auto Focus / 0.8m Min. Focus Distance	
<b>DORI</b>	<b>Detect (25px/m)</b>	50m	
	<b>Observe (63px/m)</b>	20m	
	<b>Recognise (125px/m)</b>	10m	
	<b>Identify (250px/m)</b>	5m	
<b>Video</b>	<b>Resolution</b>	8.0MP (4096 x 1860) to 960 x 432	
	<b>Frame Rate</b>	<b>Main</b>	8.0MP (1 ~ 20fps)
		<b>Sub</b>	1200 x 530 (1 ~ 20fps)
		<b>Third</b>	1920 x 860 (1 ~ 20fps)
	<b>Video Compression</b>	H.265+ / H.265 / H.264+ / H.264 / H.264B / MJPEG	
	<b>Bit Rate</b>	H.265: 6 ~ 16384Kbps / H.264: 6 ~ 16384Kbps	
	<b>Bit Rate Control</b>	Constant bit rate (CBR) / Variable bit rate (VBR)	
	<b>Day/Night</b>	Auto (ICR) / Colour / B&W	
	<b>Lighting Compensation</b>	BLC / HLC / WDR (120dB)	
	<b>Smart Scene Adaptive</b>	Yes	
	<b>White Balance</b>	Auto / Natural / Street Lamp / Outdoor / Manual / Regional Custom	
	<b>Gain Control</b>	Auto	
<b>Noise Reduction</b>	3D DNR		
<b>IVS</b>	<b>Video Functions</b>	Motion Detection (4 zones), Region of Interest (4 zones), Privacy Masking (4 zones), Defog <b>Event Triggers:</b> Motion Detection, Perimeter Protection, Video Tampering, Scene Changing, Network Disconnection, IP Address Conflict, Illegal Access, Storage Anomaly	
	<b>AI Functions</b>	<b>Perimeter Protection:</b> People and vehicle detection using tripwire or intrusion rules	
	<b>Intelligent search</b>	Search people or vehicle detection events (Perimeter Protection)	
<b>Network</b>	<b>Ethernet</b>	RJ-45 (10/100Base-T)	
	<b>Protocol</b>	IPv4; IPv6; HTTP; TCP; UDP; ARP; RTP; RTSP; RTCP; RTMP; SMTP; FTP; SFTP; DHCP; DNS; DDNS; QoS; UPnP; NTP; Multicast; ICMP; IGMP; NFS; SAMBA; PPPoE; SNMP; P2P	
	<b>Streaming Method</b>	Multicast	
	<b>Max. User Access</b>	20 Users (Total bandwidth: 64MB)	
<b>Interface</b>	<b>Video Interface</b>	N/A	
	<b>Audio Interface</b>	Built-in Mic & Built-in Speaker, 1 Audio In/Output (RCA) / Audio Compression - PCM; G.711a; G.711Mu; G.726; G.723	
	<b>Alarm Interface</b>	1 channel in: 5mA 3-5VDC / 1 channel out: 300mA 12VDC	
	<b>RS485</b>	N/A	
	<b>Edge Storage</b>	MicroSD Card (up to 256GB) / NAS / FTP / SFTP	
<b>Environmental</b>	<b>Interoperability</b>	ONVIF (Profile S, Profile G, Profile T) / CGI	
	<b>Power Supply</b>	12VDC / PoE (802.3af)	
	<b>Power Consumption</b>	Deterrence: <8.7W (12VDC), <10.85W (PoE)	
	<b>Operating Conditions</b>	-40°C ~ +60°C / ≤95% RH	
	<b>Ingress Protection</b>	IP67	
	<b>Vandal Resistance</b>	N/A	
	<b>Housing</b>	Metal	
	<b>Pan/Tilt/Rotation</b>	Pan: 0° ~ 360°, Tilt: 0° ~ 78°, Rotation: 0° ~ 360°	
	<b>Dimensions</b>	Ø 122mm x 135mm	
	<b>Net Weight</b>	0.99kg	
<b>Accessories</b>		<b>Junction Box</b>	<b>Ceiling Mount</b>
		VSBKTA137	VSBKTA109 + VSBKTB220C
		<b>Wall Mount</b>	<b>Pole Mount</b>
		VSBKTB205W-E	VSBKTB205W-E + VSBKTA152E

Your local VIP Vision™ IP solutions professional:



# 180° Intruder deterrence.

## Professional AI Series: 180° Fixed lens AI active deterrence bullet in 8.0MP

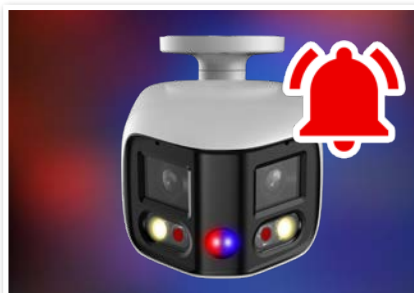
The Professional AI Series utilises the latest in AI machine learning technology to identify people & vehicles with superior accuracy and reliability. The active deterrence range incorporates AI detection and a variety of in-camera features to deter intruders. Upon a human or vehicle detection event, these cameras can trigger a white LED spotlight for security lighting, a flashing blue/red LED strobe and a loud siren with programmable message/tone, to deter intruders. They are ideal for active security across a variety of residential and commercial applications.

- Stream up to 8.0MP (4096 x 1860) at 20fps
- Activates spotlight, flashing light & siren, switching from IR to colour footage in response to alarm events
- 24/7 Colour low light footage as low as 0.005lx
- Up to 25m infrared, BLC/HLC & true WDR (120dB)
- Intelligent AI detection to identify people & vehicles
- Next-Gen Smart Motion Detection (SMD 4.0) & Perimeter Protection to prevent false alarms, using VIP Vision NVRs
- Dual cameras in one housing for a 180° field of view
- IP67 weather rated housing for outdoor use

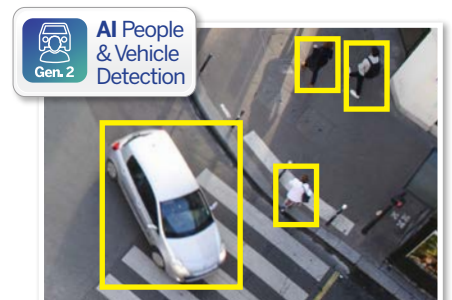


180°

180° Coverage Surveillance



Spotlight, Siren & Blue/Red Strobe



AI Human & Vehicle Detection

Specifications		8.0MP Fixed 180° AI Deterrence Bullet		
<b>Ordering Information</b>		<b>VSIPP-8BD-ID3</b>		
<b>Camera</b>	Image Sensor	Dual 1/2.7" 8.0MP Progressive Scan CMOS		
	Effective Pixels	4096 (H) x 1860 (V)		
	RAM / ROM	1GB / 128MB		
	Min Illumination	0.005 Lux/F1.4 (Color), 0.0005 lux/F1.4 (B/W, 30 IRE), 0 lux (IR)		
	Electronic Shutter	1/3 ~ 1/100,000s		
	S/N Ratio	> 56dB		
	Infrared System	2 x Infrared LED, 25m range, Auto/manual on/off control		
	LED Illumination	2 x Spotlight (Warm White), 1 x Red & Blue Alarm Light		
	<b>Lens</b>	Lens / Iris	2.8mm F1.4 Fixed Lens	
		Field of View	Horizontal: 180°, Vertical: 86°	
Focus		Auto Focus / 0.8m Min. Focus Distance		
<b>DORI</b>	Detect (25px/m)	51m		
	Observe (63px/m)	20m		
	Recognise (125px/m)	10m		
	Identify (250px/m)	5m		
<b>Video</b>	Resolution	8.0MP (4096 x 1860) to (960 x 432)		
	Frame Rate	Main	8.0MP (1 ~ 20fps)	
		Sub	1200 x 530 (1 ~ 20fps)	
		Third	1920 x 860 (1 ~ 20fps)	
	Video Compression	H.265+ / H.265 / H.264+ / H.264 / H.264B / MJPEG		
	Bit Rate	H.265: 6 ~ 16384Kbps / H.264: 6 ~ 16384Kbps		
	Bit Rate Control	Constant bit rate (CBR) / Variable bit rate (VBR)		
	Day/Night	Auto (ICR) / Color / B&W		
	Lighting Compensation	BLC / HLC / WDR (120dB)		
	Smart Scene Adaptive	Yes		
	White Balance	Auto / Natural / Street Lamp / Outdoor / Manual		
	Gain Control	Auto		
Noise Reduction	3D DNR			
<b>IVS</b>	Video Functions	Motion Detection (4 zones), Region of Interest (4 zones), Privacy Masking (4 zones), Smart Illumination, Defog <b>Event Triggers:</b> Motion Detection, Perimeter Protection, Video Tampering, Scene Changing, Network Disconnection, IP Address Conflict, Illegal Access, Storage Anomaly		
	AI Functions	<b>Perimeter Protection:</b> People and vehicle detection using tripwire or intrusion rules		
	Intelligent search	Search people or vehicle detection events (Perimeter Protection)		
<b>Network</b>	Ethernet	RJ-45 (10/100Base-T)		
	Protocol	IPv4; IPv6; HTTP; TCP; UDP; ARP; RTP; RTSP; RTCP; RTMP; SMTP; FTP; SFTP; DHCP; DNS; DDNS; QoS; UPnP; NTP; Multicast; ICMP; IGMP; NFS; SAMBA; PPPoE; SNMP; P2P		
	Streaming Method	Multicast		
	Max. User Access	20 Users (Total bandwidth: 64MB)		
<b>Interface</b>	Video Interface	N/A		
	Audio Interface	Built-in Mic & Built-in Speaker, 1 Audio In/Output (RCA) / Audio Compression - PCM; G.711a; G.711Mu; G.726; G.723		
	Alarm Interface	1 channel in: 5mA 3-5VDC / 1 channel out: 300mA 12VDC		
	RS485	N/A		
	Edge Storage	MicroSD Card (up to 256GB) / NAS / FTP / SFTP		
	Interoperability	ONVIF (Profile S, Profile G, Profile T) / CGI		
<b>Environmental</b>	Power Supply	Deterrence: <9W (12VDC), <10.35W (PoE)		
	Power Consumption	<9W, <10.3W (PoE)		
	Operating Conditions	-40°C ~ +60°C / ≤95% RH		
	Ingress Protection	IP67		
	Vandal Resistance	N/A		
	Housing	Metal		
	Pan/Tilt/Rotation	Pan: 0° ~ 360°, Tilt: 0° ~ 78°, Rotation: 0° ~ 360°		
Dimensions	Ø183mm x 99mm x 78mm			
Net Weight	0.69kg			
<b>Accessories</b>			Junction Box	
			VSBKTA130E	

Your local VIP Vision™ IP solutions professional: