

Starlight Camera

AI People & Vehicle Detection



Intelligent AI auto-tracking

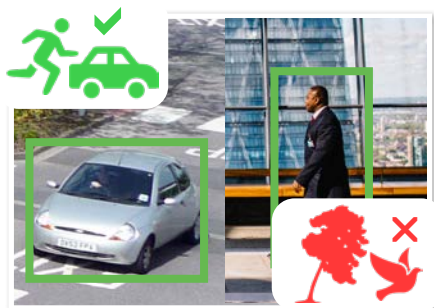
Pro AI Series: perimeter protection PTZ domes in 2.0MP, 4.0MP & 8.0MP

Offer a versatile surveillance experience and ensure all areas are covered with up to 32x optical zoom, auto-tracking and fast endless 360° panning. Experience impressive AI powered video analytics and filter false alarms with AI face detection and AI Perimeter Protection technology, providing meaningful video event notifications in real-time.

- Stream up to 8.0MP (3840 x 2160) at 25fps
- Up to 32x optical zoom lens (61.6°~2.1 viewing angles)
- Low light colour performance at 0.005lx; 150m IR
- Endless 360° panning and -15° ~ 90° tilt adjustable
- MicroSD card slot for edge recording applications
- Perimeter Protection to identify people & vehicles
- Combine Perimeter Protection with Tripwire/Intrusion to prevent false alarms, all using any VIP Vision NVR
- Power by PoE+ (802.3at) or 24VAC (PSU included)
- IP67 weather rated, lightweight dome housing



Up to 4K Ultra HD Resolution



Smart Person & Vehicle Detection



Up to 32x Lossless Optical Zoom

Specifications		2.0MP 25x Zoom PTZ with AI	4.0MP 32x Zoom PTZ with AI	8.0MP 25x Zoom PTZ with AI	
Ordering Information		VSIPPTZ-2IRP-I2	VSIPPTZ-4IRP-I2	VSIPPTZ-8IRP-I2	
Camera	Image Sensor	1/2.8" 2.0MP Starvis™ CMOS	1/2.8" 4.0MP Starvis™ CMOS	1/1.8" 8.0MP Starvis™ CMOS	
	Effective Pixels	1920 (H) x 1080 (V)	2560 (H) x 1440 (V)	3840 (H) x 2160 (V)	
	RAM / ROM	1GB / 4GB			
	Min Illumination	0.005 Lux/F1.6 (Colour), 0.0005 Lux/ F1.6 (B/W)/, 0 Lux (IR Light On)	0.005 Lux/F1.35 (Colour), 0.0005 Lux/ F1.35 (B/W)/, 0 Lux (IR Light On)	0.005 Lux/F1.6 (Colour), 0.0005 Lux/ F1.6 (B/W)/, 0 Lux (IR Light On)	
Infrared System		4 x Infrared LED, 150m range, Zoom Prio/Auto/Manual/Smart IR On/Off control			
Lens	Lens / Iris	4.8mm ~ 120mm F1.6 ~ F3.5 Motorised Lens	4.8mm ~ 154mm F1.35~ F4.4 Motorised Lens	5.4mm ~ 135mm F1.6 ~ F4.0 Motorised Lens	
	Field of View	58.7° ~ 2.8° (H), 33.2° ~ 1.5° (V), 67.5 ~ 3.2° (D) (25x Optical Zoom)	55.81° ~ 2.37° (H), 31.92° ~ 1.34° (V), 63.71° ~ 2.71° (D) (32x Optical Zoom)	61.6° ~ 3.6° (H), 35.7° ~ 2° (V), 66.6 ~ 4° (D) (25x Optical Zoom)	
	Focus	Auto/Semi-Auto/Manual / 0.1m ~ 1.5m Min. Focus Distance		Auto/Semi-Auto/Manual / 0.5m ~ 2m Min. Focus Distance	
DORI	Detect (25px/m)	1614m	2124m	2700m	
	Observe (63px/m)	646m	839m	1066m	
	Recognise (125px/m)	323m	425m	540m	
	Identify (250px/m)	161m	212m	270m	
Pan / Tilt Range		Pan: 0° ~ 360° (endless) / Tilt: -15° ~ 90° / Auto Flip 180°			
PTZ Speed		Preset: Pan: 400°/s; Tilt: 300°/s Manual: Pan: 300°/s; Tilt: 200°/s			
Modes / Presets		Up to 300 presets / 5 Pattern, 8 Tour, 5 scanning, Auto Pan, Auto Scan			
Start-up Action		Auto-restore to previous PTZ/lens status			
Auto Tracking		Support			
Video	Resolution	1080p (1920 x 1080) to CIF (352 x 288)	4.0MP (2560 x 1440) to CIF (352 x 288)	8.0MP (3840 x 2160) to CIF (352 x 288)	
	Frame Rate	Main	1080p (1 ~ 25fps)	4.0MP (1 ~ 25fps)	8.0MP (1 ~ 25fps)
		Sub		D1(1 ~ 25fps)	
		Third	1080p (1 ~ 25fps)	720p (1 ~ 25fps)	1080p (1 ~ 25fps)
	Video Compression	H.265+ / H.265 / H.264+ / H.264 / MJPEG			
	Bit Rate	H.265/H.264: 3 kbps~20480 kbps		H.265/H.264: 51 kbps~16384 kbps	
	Bit Rate Control	Constant bit rate (CBR) / Variable bit rate (VBR)			
	Day/Night	Auto (ICR) / Color / B&W			
	Lighting Compensation	BLC / HLC / WDR (120dB)			
	White Balance	Auto / Indoor / Outdoor / Tracking / Manual / Sodium lamp / Natural light / Street lamp			
Gain Control	Auto / Manual				
Noise Reduction	2D / 3D DNR				
Picture Control	Flip 0°/180°				
IVS	Intelligent Functions	Abandoned/Missing Object, Motion Detection, Region of Interest, Electronic Image Stabilisation, Privacy Masking (24 zones), Defog			
	Perimeter Protection	Tripwire & Intrusion (Add recognition of humans & vehicles)			
	Intelligent Search	Via NVR Smart Search, Search tripwire/intrusion events by people or vehicle			
	SMD+	Filter motion detection alarms, recognises humans and vehicles from other moving objects			
Metadata	Supports human, motor vehicles and non motor vehicle search. Supports face image capture and footage search by face image & facial attributes				
Network	Ethernet Protocol	RJ-45 (10/100Base-T)			
	Streaming Method	Unicast / Multicast			
	Max. User Access	20 Users			
Interface	Audio Interface	1 Input / 1 Output / Compression: G.711A; G.711Mu; G.726; AAC; G.722.1; G.723; G.729; PCM; MPEG2-Layer2			
	Alarm Interface	2 Inputs / 1 Output			
	RS485	N/A			
	Edge Storage	FTP; Micro SD card (256G); P2P			
Interoperability	ONVIF Profile S&G&T; CGI				
Environmental	Power Supply	24VAC/3A (±25%) / PoE+ (802.3at)			
	Power Consumption	<13W / <22W (IR on)	<13W / <22W (IR on)	<12W / <21W (IR on)	
	Operating Conditions	-40° ~ +70° C / Less than 95% RH			
	Ingress Protection	IP67			
	Vandal Resistance	IK10			
	Surge Protection	TVS 6000V Lightning Protection / Surge Protection			
	Housing	Metal			
Dimensions	Ø190mm x 332mm				
Net Weight	4.7kg				

Application

Included Accessories	Wall Mount		Pole Mount		Ceiling Mount	Parapet Mount
VSBKTB305W (Wall Mount Bracket) + 24VAC/3A PSU	VSBKTB305W	VSBKTB305W + VSBKTA120	VSBKTB305W + VSBKTA140	VSBKTB305W + VSBKTA150	VSBKTA111 + VSBKTB300C + (+ VSBKTA112/13 optional extension)	VSBKTA111 + VSBKTB3035 +

Your local VIP Vision™ IP solutions professional:



Starlight
Camera



Face
Capture



AI People
& **Vehicle**
Detection



High mobility PTZ solution

Pro AI PTZ Series: 32x Optical Zoom Recessed speed dome available in 2.0MP

This ceiling-recessed mount network PTZ dome delivers lightning fast PTZ mobility, up to 25x optical zoom and auto-tracking, all in a vandal resistant body. Experience AI face detection & AI Perimeter Protection technology, providing meaningful video event notifications in real-time. Ideal for indoor, time critical applications such as in banks, retail, in gaming and more.

- Stream footage at FHD (1920x1080)/50fps
- Super responsive 500°/second pan and tilt speed
- True WDR (120dB) and colour low light at 0.005lx
- MicroSD slot for recording at the edge up to 256GB
- Endless 360° panning and 0° ~ 90° tilt adjustable
- Face detection & intelligent video analytic functions
- Auto-tracking, alarm I/O and audio I/O support
- IK10 vandal rated recessed ceiling mount housing



AI Auto-Tracking



32x Lossless Optical Zoom



AI-Enhanced Face Detection

Specifications		2.0MP 32x Zoom PTZ with AI	
Ordering Information		VSIPPTZ-2C-I	
Camera	Image Sensor	1/2.8" 2.0MP Starvis™ CMOS	
	Effective Pixels	1920 (H) x 1080 (V)	
	RAM / ROM	1GB / 4GB	
	Min Illumination	0.005 Lux/F1.35 (Colour), 0.0005 Lux/ F1.35 (B/W), 0 Lux (IR Light On)	
	Infrared System	4 x Infrared LED, 150m range, Zoom Prio/Auto/Manual/Smart IR On/Off control	
	Lens	Lens / Iris	4.9mm ~ 156mm F1.35 ~ F4.4 Motorised Lens
Field of View		62.8° ~ 2.2° (H), 36.7° ~ 1.3° (V), 69.2° ~ 2.6° (D) (32x Optical Zoom)	
Focus		Auto/Semi-Auto/Manual / 1m ~ 1.5m Min. Focus Distance	
DORI	Detect (25px/m)	2152m	
	Observe (63px/m)	850m	
	Recognise (125px/m)	430m	
	Identify (250px/m)	215m	
PTZ	Pan / Tilt Range	Pan: 0° ~ 360° (endless) / Tilt: 0° ~ 90° / Auto Flip 180°	
	PTZ Speed	Preset: Pan: 500°/s; Tilt: 500°/s Manual: Pan: 350°/s; Tilt: 250°/s	
	Modes / Presets	Up to 300 presets / 5 Pattern, 8 Tour, 5 scanning, Auto Pan, Auto Scan	
	Start-up Action	Auto-restore to previous PTZ/lens status	
	Auto Tracking	Support	
Video	Resolution	1080p (1920 x 1080) to CIF (352 x 288)	
	Frame Rate	Main	1080p (1 ~ 50fps)
		Sub	D1(1 ~ 25fps)
		Third	720p (1 ~ 25fps)
	Video Compression	H.265/H.264B/H.264M/H.264H/MJPEG/H.265+/H.264+	
	Bit Rate	H.265/H.264: 3 kbps-20480 kbps	
	Bit Rate Control	Constant bit rate (CBR) / Variable bit rate (VBR)	
	Day/Night	Auto (ICR) / Color / B&W	
	Lighting Compensation	BLC / HLC / WDR (120dB)	
	White Balance	Auto / Indoor / Outdoor / Tracking / Manual / Sodium lamp / Natural light / Street lamp	
	Gain Control	Auto / Manual	
Noise Reduction	2D / 3D DNR		
Picture Control	Flip 0°/180°		
IVS	Intelligent Functions	Abandoned/Missing Object, Motion Detection, Region of Interest, Electronic Image Stabilisation, Privacy Masking (24 zones), Defog	
	Perimeter Protection	Tripwire & Intrusion (Add recognition of humans & vehicles)	
	Intelligent Search	Via NVR Smart Search, Search tripwire/intrusion events by people or vehicle	
	SMD+	Filter motion detection alarms, recognises humans and vehicles from other moving objects	
	Metadata	Supports human, motor vehicles and non motor vehicle search. Supports face image capture and footage search by face image & facial attributes	
Network	Ethernet Protocol	RJ-45 (10/100Base-T)	
	Streaming Method	Unicast / Multicast	
	Max. User Access	20 Users	
	Audio Interface	1 Input / 1 Output / Compression: G.711A; G.711Mu; G.726; AAC; G.722.1; G.723; G.729; PCM; MPEG2-Layer2	
Interface	Alarm Interface	2 Inputs / 1 Output	
	RS485	N/A	
	Edge Storage	FTP; Micro SD card (256G); P2P	
	Interoperability	ONVIF Profile S&G&T; CGI	
	Power Supply	24VAC/3A (±25%) / PoE+ (802.3at)	
Environmental	Power Consumption	<10W / <16W (IR on)	
	Operating Conditions	-30° ~ +60° C / Less than 95% RH	
	Ingress Protection	N/A	
	Vandal Resistance	IK10	
	Surge Protection	TVS 6000V Lightning Protection / Surge Protection	
	Housing	Metal	
	Dimensions	Ø186 mm x 253 mm (Ø160 mm hole cut)	
	Net Weight	2.2kg	
Application			
Included Accessories			
24VAC/3A PSU			

Your local VIP Vision™ IP solutions professional:



Starlight
Camera



Face
Capture



AI People
& **Vehicle**
Detection



AI Auto
Tracking



Big AI features, compact size

Pro AI PTZ Series: 25x Optical Zoom PTZ Dome in 4.0MP

This network PTZ dome offers versatile surveillance and affordability without skipping on highlights of the Pro AI Series. Ensure all areas are covered with up to 25x optical zoom. Experience impressive AI with real-time face detection and AI Perimeter Protection technology, providing meaningful video event notifications in real-time.

- Stream up to 4.0MP (2560x1440) at 25fps
- Responsive 240°/s pan and 160°/s tilt speeds
- True WDR (120dB) and colour low light at 0.005lx
- Superb Infrared distance up to 100m
- MicroSD slot for recording at the edge up to 512GB
- Endless 360° panning and -5° ~ 90° tilt adjustable
- Face detection & intelligent video analytic functions
- Auto-tracking, alarm I/O and audio I/O support
- IP66 weather resistance

**AI auto-tracking activates only via people detection*



Smart Person & Vehicle Detection

25x



25x Lossless Optical Zoom



AI Auto-Tracking

Specifications		4.0MP 25x Zoom PTZ with AI	
Ordering Information		VSIPPTZ-4IRC-I	
Camera	Image Sensor	1/2.8" 4.0MP Starvis™ CMOS	
	Effective Pixels	2560 (H) x 1440 (V)	
	RAM / ROM	512MB / 128MB	
	Min Illumination	0.005 Lux/F1.6 (Colour), 0.0005 Lux/ F1.6 (B/W)/0 Lux (IR Light On)	
Lens	Infrared System	4 x Infrared LED, 150m range, Zoom Prio/Auto/Manual/Smart IR On/Off control	
	Lens / Iris	5mm ~ 125mm F1.6 ~ F3.6 Motorised Lens	
	Field of View	51.9° ~ 3.0° (H), 39.7° ~ 2.2° (V), 63.1° ~ 3.7° (D) (25x Optical Zoom)	
	Focus	Auto/Semi-Auto/Manual / 0.1m ~ 1.5m Min. Focus Distance	
DORI	Detect (25px/m)	2500m	
	Observe (63px/m)	987m	
	Recognise (125px/m)	500m	
	Identify (250px/m)	250m	
PTZ	Pan / Tilt Range	Pan: 0° ~ 360° (endless) / Tilt: -5° ~ 90° / Auto Flip 180°	
	PTZ Speed	Preset: Pan: 240°/s; Tilt: 160°/s Manual: Pan: 240°/s; Tilt: 160°/s	
	Modes / Presets	Up to 300 presets / 5 Pattern, 8 Tour, 5 scanning, Auto Pan, Auto Scan	
	Start-up Action	Auto-restore to previous PTZ/lens status	
	Auto Tracking	Support	
Video	Resolution	4.0MP (2560 x 1440) to CIF (352 x 288)	
	Frame Rate	Main	4.0MP (1 ~ 25fps)
		Sub	D1(1 ~ 25fps)
		Third	720p (1 ~ 25fps)
	Video Compression	H.265/H.264B/H.264M/H.264H/MJPEG/H.265+/H.264+	
	Bit Rate	H.265/H.264: 3 kbps-20480 kbps	
	Bit Rate Control	Constant bit rate (CBR) / Variable bit rate (VBR)	
	Day/Night	Auto (ICR) / Color / B&W	
	Lighting Compensation	BLC / HLC / WDR (120dB)	
	White Balance	Auto / Indoor / Outdoor / Tracking / Manual / Sodium lamp / Natural light / Street lamp	
	Gain Control	Auto / Manual	
	Noise Reduction	2D / 3D DNR	
Picture Control	Flip 0°/180°		
IVS	Intelligent Functions	Abandoned/Missing Object, Motion Detection, Region of Interest, Electronic Image Stabilisation, Privacy Masking (24 zones), Defog	
	Perimeter Protection	Tripwire & Intrusion (Add recognition of humans & vehicles)	
	Intelligent Search	Via NVR Smart Search, Search tripwire/intrusion events by people or vehicle	
	SMD+	Filter motion detection alarms, recognises humans and vehicles from other moving objects	
	Metadata	Supports human, motor vehicles and non motor vehicle search. Supports face image capture and footage search by face image & facial attributes	
Network	Ethernet Protocol	RJ-45 (10/100Base-T)	
	Streaming Method	Unicast / Multicast	
	Max. User Access	20 Users	
	Audio Interface	1 Input / 1 Output / Compression: G.711A; G.711Mu; G.726; AAC; G.722.1; G.723; G.729; PCM; MPEG2-Layer2	
Interface	Alarm Interface	2 Inputs / 1 Output	
	RS485	N/A	
	Edge Storage	FTP; Micro SD card (256G); P2P	
	Interoperability	ONVIF Profile S&G&T; CGI	
Environmental	Power Supply	12VDC/3A (±25%) / PoE+ (802.3at)	
	Power Consumption	<9.5W / <21.5W (IR on)	
	Operating Conditions	-40° ~ +65° C / Less than 95% RH	
	Ingress Protection	IP66	
	Vandal Resistance	N/A	
	Surge Protection	TVS 6000V Lightning Protection / Surge Protection	
	Housing	Metal	
	Dimensions	Ø168 mm x 171.1 mm	
Net Weight	2.5kg		

Application

	Included Accessories	Pole Mount	Parapet Mount
		24VAC/3A PSU	VSBKTA101 + VSBKTB303W + VSBKTA150
	Wall Mount	Ceiling Mount	
	VSBKTB303W + VSBKTA101	VSBKTA101 + VSBKTB300C + (+ VSBKTA112/13 optional extension)	

Your local VIP Vision™ IP solutions professional:



The best in imaging & AI.

Ultimate AI PTZ Series: 40x optical zoom PTZ dome available in 8.0MP

Ultimate AI Series PTZ domes offer the best in camera performance & mobility, with machine-learning AI features to deliver a superior PTZ surveillance experience. Capture incredible images in 4K resolution, with 40x optical zoom & exceptional low-light performance. This camera can perform face recognition comparison and distinguish people & vehicles from other motion events, using smart auto-tracking to follow subjects.

- Stream up to 8.0MP / 4K (3840 x 2160) at 25fps
- 40x optical zoom lens (64° ~ 2° viewing angles)
- Low light colour performance at 0.005lx; 500m IR
- Intelligent auto tracking via person/vehicle AI rules
- In-camera face recognition
- Endless 360° panning with -30° ~ 90° tilt adjust
- MicroSD card slot for edge recording applications
- Audio, alarm and video interface input/output
- Supports power via Hi-PoE (IEEE802.1x)
- IP67 weather rated metal chassis



40x Lossless Optical Zoom



Face Recognition & Perimeter Protection



Superb Low Light Performance

Specifications		8.0MP 40x Zoom PTZ with AI
Ordering Information		VSIPTZ-8IRU-I2
Camera	Image Sensor	1/1.8" 8.0MP Progressive Scan CMOS
	Effective Pixels	3840 (H) x 2160 (V)
	RAM/ROM	2GB/8GB
	Min Illumination	0.005 Lux/F1.4 (Color), 0.0005 Lux/ F1.4 (B/W), 0 Lux/F1.4 (IR on)
	Infrared System	10 x Infrared LED, 500m range, Zoom Prio/Manual/Smart IR on/off control
Lens	Lens / Iris	5.6 ~ 223mm F1.4 ~ F4.5 Motorised Lens with Auto Iris
	Field of View	63.9° ~ 2.0° (H), 37.3° ~ 1.1° (V), 71.2° ~ 2.3° (D) (40x Optical Zoom)
	Focus	Auto/Semi-Auto/Manual Control, 0.5 ~ 2m Min. Focus Distance
DORI	Detect (25px/m)	4400m
	Observe (63px/m)	1740m
	Recognise (125px/m)	880m
	Identify (250px/m)	440m
PTZ	Pan / Tilt Range	Pan: 0 ~ 360° (endless) / Tilt: -30 ~ 90° / Auto-flip 180°
	PTZ Speed	Presets: Pan: 240°/s; Tilt: 120°/s Manual: Pan: 240°/s; Tilt: 100°/s
	Modes / Presets	Up to 300 presets / 5 Pattern, 8 Tour, Auto Pan, 5 Auto Scan
	Start-up Action	Auto-restore to previous PTZ/lens status
Video	Resolution	8.0MP (3840 x 2160) to CIF (352 x 288)
	Frame Rate	Main: 8.0MP (1 ~ 25fps) Sub: D1 (1 ~ 25fps) Third: 1080p (1 ~ 25fps)
	Video Compression	H.265+ / H.265 / H.264+ / H.264 / MJPEG (Sub Stream 1)
	Bit Rate	H.265: 256 ~ 10240Kbps - H.264: 512 ~ 16384Kbps
	Bit Rate Control	Constant bit rate (CBR) / Variable bit rate (VBR)
	Day/Night	Auto (ICR) / Color / B&W
	Lighting Compensation	BLC / HLC / WDR (120dB)
	White Balance	Auto / Indoor / Outdoor / Manual / Sodium Lamp / Natural / Street Lamp
	Gain Control	Auto / Manual
	Noise Reduction	Ultra 2D/3D NR
Picture Control	Flip 180°	
Intelligence	AI Functions	Face recognition (database supports up to 10,000 faces), Perimeter protection (tripwire & intrusion with person/vehicle detection), Metadata (body & face attributes, vehicle attributes), Auto tracking via person/vehicle detection
	IVS Functions	Abandoned object detection, Missing object detection
	Video Functions	Motion Detection, Region of Interest, Privacy Masking (24 zones), Defog
	Event Trigger	Motion detection, video tampering, scene changing, network disconnection, IP address conflict, illegal access, and storage anomaly
Network	Ethernet	RJ-45 (10/100 Base-T)
	Protocol	IPv4; IPv6; HTTP; HTTPS; 802.1x; QoS; FTP; SMTP; UPnP; SNMP v1/v2c/v3 (MIB-2); DNS; DDNS; NTP; RTSP; RTP; TCP; UDP; IGMP; ICMP; DHCP; PPPoE; ARP; RTCP; RTMP
	Streaming Method	Unicast / Multicast
	Max. User Access	20 Users
Interface	Audio Interface	1 Input, 1 Output / Compression: G.711a/G.711mu/PCM/G.726/AAC/G722.1/G.729/ MPEG2-Layer2/ G723
	Alarm Interface	7 Inputs / 2 Outputs
	RS485	Yes
	Edge Storage	MicroSD Card (up to 512GB) / FTP
Environmental	Interoperability	ONVIF Profile S&G&T / CGI
	Power Supply	36VDC / 2.23A (±25%) / Hi-PoE
	Power Consumption	30W / 48W (illuminator + PTZ working)
	Operating Conditions	-40° ~ +70° C / Less than 95% RH
	Ingress Protection	IP67
	Housing	Metal
	Dimensions & Weight	Ø262(mm) x 415.6 (mm) / 10kg

Application		Included Accessories	
		AC power supply VSBKTB306W	
		Wall Mount VSBKTB306W	Pole Mount VSBKTB306W + VSBKTA150

Your local VIP Vision™ IP solutions professional:



Total coverage, every angle.

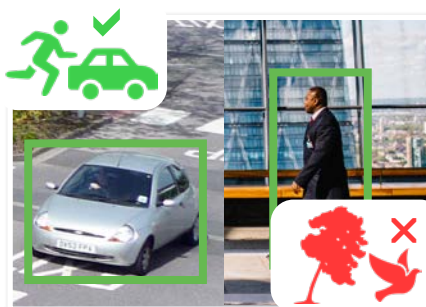
PTZ AI Series: PTZ positioning camera with AI powered video analytics

Built for complete open-area coverage, the vandal-resistant AI PTZ combines the flexibility and power of PTZ with the utility of smart AI features. The PTZ AI Series identifies people & vehicles using machine learning, to reduce false motion detection alerts and provide meaningful video event notifications in real-time.

- Stream up to 2.0MP (1920 x 1080) at 50fps
- 25x optical zoom lens (59.2° ~ 2.4° viewing angles)
- Low light colour performance at 0.005lx; 150m IR
- Auto tracking with intelligent video functions
- Intelligent AI detection to identify people & vehicles
- Smart Motion Detection (SMD+) & Perimeter Protection to prevent false alarms, using VIP Vision NVRs
- MicroSD slot for recording at the edge up to 256GB
- Supports Power over Ethernet (802.3af) or 24VAC
- IP67 weather rated & lightning proof housing



Up to 25x Lossless Optical Zoom



Smart Person & Vehicle Detection



Complete Pan-Tilt Area Coverage

Specifications		2.0MP AI PTZ Positioning Camera		
Ordering Information		VSIPPTZ-2IRW-12		
Camera	Image Sensor	1/2.8" 2.0MP Progressive Scan CMOS		
	Effective Pixels	1920 (H) x 1080 (V)		
	RAM / ROM	1GB / 4GB		
	Min Illumination	0.005 Lux/F1.6 (Color), 0.0005 Lux/ F1.6 (B/W), 0 Lux (IR on)		
Lens	S/N Ratio	≥61dB		
	Infrared System	4 x Infrared LED, 150m range, Zoom Prio / Manual / OFF on/off control		
	Lens / Iris	4.8 ~ 120mm F1.6 ~ F3.5 Motorised Lens with Auto/Manual Iris control		
	Field of View	Horizontal: 58.5~2.8°, Vertical: 33.2°~1.5° (25x Optical Zoom)		
DORI	Focus	Auto/Semi-Auto/Manual / 0.1 ~ 1.5m Min. Focus Distance		
	Detect (25px/m)	1655m		
	Observe (63px/m)	654m		
	Recognise (125px/m)	331m		
PTZ	Identify (250px/m)	165m		
	Pan / Tilt Range	Pan: 0 ~ 360° / Tilt: -90 ~ 90°		
	PTZ Speed	Preset: Pan: 160°/s; Tilt: 110°/s Manual: Pan: 0.1° ~ 120°/s; Tilt: 0.1° ~ 75°/s		
	Modes / Presets	Up to 300 presets / 8 tour		
Video	Start-up Action	Auto-restore to previous PTZ/lens status		
	Auto Tracking	Yes		
	Resolution	1080p (1920 x 1080) to CIF (352 x 288)		
	Frame Rate	Main	1080p (1 ~ 25fps)	
		Sub	D1/ CIF (1 ~ 25fps)	
		Third	1080p / 960p / 720p / D1 / CIF (1 ~ 25fps)	
	Video Compression	H.264H; H.264B; Smart H.265+; H.264; H.265; Smart H.264+; MJPEG (Sub Stream)		
	Bit Rate	H.264: 64 ~ 10496Kbps / H.265: 25 ~ 6400Kbps		
	Bit Rate Control	Constant bit rate (CBR) / Variable bit rate (VBR)		
	Day/Night	Auto (ICR) / Color / B&W		
	Lighting Compensation	BLC / HLC / WDR (120dB)		
	Smart Scene Adaptive	N/A		
	White Balance	Auto / Indoor / Outdoor / Track / Manual / Sodium Lamp / Natural Light / Street Lamp		
	Gain Control	Auto / Manual		
Noise Reduction	2D / 3D			
Picture Control	Flip 180°			
IVS	Video Functions	Abandoned/Missing Object, Motion Detection, Region of Interest, Electronic Image Stabilisation, Privacy Masking (24 zones), Defog		
	AI Functions	Face recognition (face snapshots, detection, enhancement of face images), Perimeter protection (tripwire & intrusion with person/vehicle detection), Metadata (body & face attributes, vehicle attributes), Auto tracking via person/vehicle detection		
	Event Trigger	Motion Detection, Video Tampering, Audio Detection, Network Disconnection, IP Address Conflict, Illegal Access, Storage Anomaly		
Network	Ethernet	RJ-45 (10Base-T/100Base-TX)		
	Protocol	IPv4; IPv6; HTTP; HTTPS; 802.1x; Qos; FTP; SMTP; UPnP; SNMP; DNS; DDNS; NTP; RTSP; RTP; TCP; UDP; IGMP; ICMP; DHCP; PPPoE; ARP; SNMPv1/v2c/v3 (MIB-2); RTCP; RTMP		
	Streaming Method	Unicast / Multicast		
	Max. User Access	20 Users		
Interface	Video Interface	N/A		
	Audio Interface	1 Input, 1 Output / Supports Two-way Audio / Compression: G.711a; G.711Mu; G.726; AAC; MPEG2-Layer2; G.722.1; G.729; G.723		
	Alarm Interface	2 Inputs / 1 Output / Alarm Linkage: Capture; Preset; Tour; Pattern; SD Card Record; Trigger Digital Output; Client Electronic Map; Send Email		
	RS485	N/A		
	Edge Storage	MicroSD Card (up to 256GB) / FTP / NAS		
Environmental	Interoperability	ONVIF (Profile S/ Profile G /Profile T) / CGI / SDK/ P2P		
	Power Supply	12VDC 4A ± 10% / PoE (802.3af)		
	Power Consumption	<16W / <24W (IR on, PTZ operations)		
	Operating Conditions	-40° ~ +70° C / ≤95% RH		
	Ingress Protection	IP67		
	Surge Protection	TVS 6000V Lightning Proof / Surge Protection / Voltage Transient Protection		
	Housing	Die cast aluminum		
	Dimensions	161mm x 135mm x 292mm		
Net Weight	3.6kg			
Application				
Included Accessories		Junction Box	Wall Mount	
12VDC/4A Power Adapter		VSBKTA720	VSBKTB730W	

Your local VIP Vision™ IP solutions professional:



AI People
& Vehicle
Detection



Compact & powerful AI PTZ.

PTZ AI Series: 4x zoom PTZ dome with AI powered video analytics

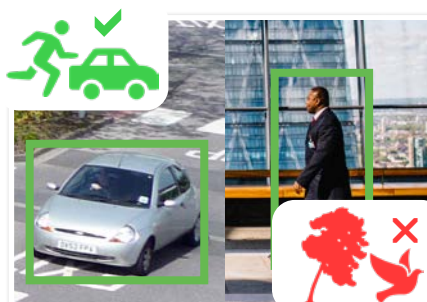
Small in size but big on features, the PTZ AI Dome combines the flexibility and coverage of PTZ with the power of smart AI technology. The PTZ AI Series identifies people & vehicles using machine learning, reducing false motion detection alerts and provide meaningful video event notifications in real-time.

- Stream up to 4.0MP (2560 x 1440) at 25fps
- 4x optical zoom lens (31.6° ~ 96.9° H viewing angles)
- Low light colour performance at 0.005lx; 15m IR
- 355° panning with tilt adjust; flip 180°
- Intelligent AI detection to identify people & vehicles
- Smart Motion Detection (SMD+) & Perimeter Protection to prevent false alarms, using VIP Vision NVRs
- MicroSD card slot for recording up to 256GB
- Supports Power over Ethernet (802.3af)
- IP66 weather & IK08 vandal rated resistant housing



4x

Up to 4x Optical Zoom



Smart Person & Vehicle Detection



0.005lx

Superb Low Light Performance

Specifications		4.0MP 4x Zoom AI PTZ Dome	
Ordering Information		VSIPTZ-4IRM-I	
Camera	Image Sensor	1/2.8" 4.0MP Progressive Scan CMOS	
	Effective Pixels	2560 (H) x 1440 (V)	
	RAM / ROM	1GB / 4GB	
	Min Illumination	0.005 Lux/F1.8 (Color), 0.0005 Lux/ F1.8 (B/W), 0 Lux (IR on)	
	S/N Ratio	N/A	
Lens	Infrared System	3 x Infrared LED, 15m range, Auto/manual on/off control	
	Lens / Iris	2.8 ~ 12mm F1.8 ~ F2.7 Motorised Lens with Auto Iris	
	Field of View	Horizontal: 32~97°, Vertical: 18°~51° (4x Optical Zoom)	
DORI	Focus	Auto/Manual / 0.2m Min. Focus Distance	
	Detect (25px/m)	147m	
	Observe (63px/m)	59m	
	Recognise (125px/m)	29m	
PTZ	Identify (250px/m)	15m	
	Pan / Tilt Range	Pan: 0 ~ 355° / Tilt: 5 ~ 90°	
	PTZ Speed	Preset: Pan: 80°/s; Tilt: 40°/s Manual: Pan: 70°/s; Tilt: 30°/s	
	Modes / Presets	Up to 300 presets / 8 tour	
	Start-up Action	Auto-restore to previous PTZ/lens status	
Video	Auto Tracking	N/A	
	Resolution	4.0MP (2560 x 1440) to CIF(352 x 288)	
	Frame Rate	Main	4.0MP (1 ~ 25fps)
		Sub	D1 (1 ~ 25fps)
		Third	D1 (1 ~ 25fps) / 720p (1 ~ 25fps)
	Video Compression	H.265; H.264 Baseline Profile; H.264 Main Profile; H.264 High Profile; MJPEG (Sub Stream); H.265+; H.264+	
	Bit Rate	H.264 / H.265 / MJPEG: 3 ~ 20480Kbps	
	Bit Rate Control	Constant bit rate (CBR) / Variable bit rate (VBR)	
	Day/Night	Auto (ICR) / Color / B&W	
	Lighting Compensation	BLC / HLC / WDR (120dB)	
	Smart Scene Adaptive	N/A	
White Balance	Auto / Indoor / Outdoor / Track / Manual / Sodium Lamp / Natural Light / Street Lamp		
IVS	Gain Control	Auto / Manual	
	Noise Reduction	2D / 3D	
	Picture Control	Flip 180°	
	Video Functions	Abandoned/Missing Object, Motion Detection, Region of Interest, Electronic Image Stabilisation, Privacy Masking (24 zones), Defog	
	AI Functions	Smart Motion Detection (SMD+): People and vehicle detection using motion detection Perimeter Protection: People and vehicle detection using tripwire or intrusion rules Other: Fast Moving Detection, Loitering Detection, Parking & Gathering Detection	
Network	People Counting	Supports Line Crossing/Region/Queuing People Counting, Report Generation	
	Event Trigger	Motion Detection, Video Tampering, Scene Changing, Network Disconnection, IP Address Conflict, Illegal Access, Storage Anomaly	
	Intelligent Search	Search people or vehicle detection events (SMD+, Perimeter Protection)	
Interface	Ethernet	RJ-45 (10Base-T/100Base-TX)	
	Protocol	IPv4; IPv6; HTTP; HTTPS; 802.1x; Qos; FTP; SMTP; UPnP; SNMPv1/v2c/v3(MIB-2); DNS; DDNS; NTP; RTSP; RTP; TCP; UDP; IGMP; ICMP; DHCP; PPPoE; ARP; RTCP	
	Streaming Method	Unicast / Multicast	
	Max. User Access	20 Users	
Environmental	Video Interface	N/A	
	Audio Interface	1 Input, 1 Output / Compression: G.711a; G.711Mu; G.726; AAC; MPEG2-Layer2; G.722.1; G.729; G.723	
	Alarm Interface	N/A	
	RS485	N/A	
	Edge Storage	MicroSD Card (up to 256GB) / FTP / P2P	
Environmental	Interoperability	ONVIF/ CGI	
	Power Supply	12VDC 1.5A / PoE (802.3af)	
	Power Consumption	<3W / <8.5W (IR on)	
	Operating Conditions	-30° ~ +60° C / ≤95% RH	
	Ingress Protection	IP66	
	Vandal Resistance	IK08	
	Housing	Metal	
	Pan/Tilt/Rotation	N/A	
	Dimensions	Ø128mm x 65mm	
	Net Weight	0.49kg	

Ceiling Mount	Wall Mount	Corner Mount	Pole Mount	Pole Mount
VSBKTA107 + VSBKTB220C	VSBKTA107 + VSBKTB305W	VSBKTA107 + VSBKTB305W + VSBKTA151	VSBKTA107 + VSBKTB305W + VSBKTA150	VSBKTA107 + VSBKTB220C + VSBKTA150

Your local VIP Vision™ IP solutions professional: