

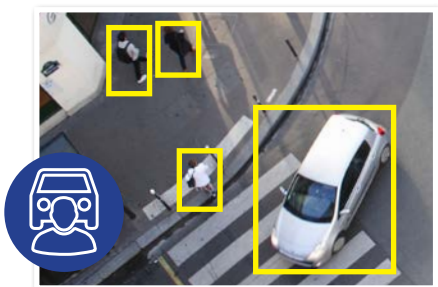


Enterprise AI surveillance.

Ultimate AI Series: NVRs available in 64 and 128 channel

Monitor your enterprise's operations with ease using the VIP Vision™ Ultimate AI Series Network Video Recorder. Enjoy accurate video notifications and seamless footage search powered by advanced AI. Simultaneously connect more users with 2.5GBps Ethernet input for a better user experience. Protect what's most important to you by integrating a wide range of cameras and benefit from ample footage storage.

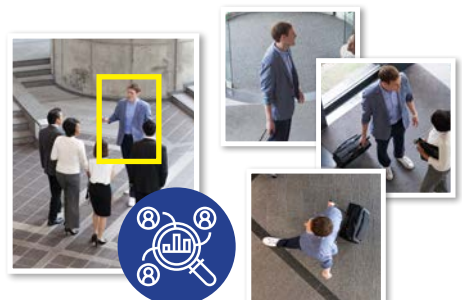
- Record up to 32.0MP with H.265 video compression
- Up to 1024Mbps bandwidth (800Mbps outgoing)
- Suite of AI functions for improved alerts & playback
- Supports AI face detection and recognition via NVR
- Supports AI human/vehicle detection via NVR
- Supports ANPR by camera up to 32 channels
- 8 x SATA bay with HDD support up to 16TB/bay
- Backup via external USB device or local network
- Supports 2 x 2.5GBps Ethernet network input
- Decode up to 64 channels at 720p (fps)



AI Human & Vehicle Detection



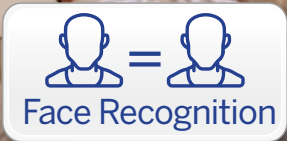
AI Face Detection & Recognition



Find Footage with AI Quick Search

		NVR64ULT-1	NVR128ULT-1	
General	Video Input	64 channel	128 channel	
	Processor & Operation	Industrial-grade processor, Embedded Linux OS, Web Interface / Local GUI		
	Interoperability	ONVIF (Profile T; Profile S; Profile G); CGI; SDK. Supports RTSP, Sony, Samsung, Axis, Pelco, Arecont, Canon. Chrome, IE9 and later, Firefox support.		
	App Integration	iOS / Android		
Recording	Recording Resolution	Configurable from 32.0MP (6528 x 4896) to D1 (704 x 576)		
	Network Bandwidth	AI Disabled	1024Mbps (incoming/recording), 800Mbps (outgoing)	
		AI Enabled	512Mbps (incoming/recording), 400Mbps outgoing	
	Video & Audio Compression	Video: Smart H.265+ / H.265 / H.264 / H.264+ / MJPEG / MPEG4, Audio: G.711a / G.711u / PCM / G726		
	Playback	Channels	Up to 16 channels	
		Modes	General Recording, Motion Detection, Intelligent Events, Alarm Triggers	
Decoding Capacity	AI Disabled	8CH@8.0MP/25fps, 64CH@720P/25fps	8CH@8.0MP/25fps, 128CH@D1/25fps	
	AI Enabled			
Backup Method	Portable hard drive / Burner / USB device / Network / eSATA			
Interface	HDD	8 x SATA bays up to 16TB per bay, RAID 0/1/5/6/10, Hot swapping		
	Audio	1 channel input (RCA), 2 channel output (RCA)		
	Alarm	Interface	16 channels input, 8 channels output	
		Types	General (motion, video loss, scene change, etc.), Anomalies (camera disconnect, disk full, IP conflict, etc.), Intelligent (AI alerts, face, human/vehicle, etc.)	
		Actions	Begin record, take snapshot, camera external alarm output, audio, buzzer, NVR log, camera preset, email	
	Display	Input	4 x HDMI (up to 3840 x 2160), 2 x VGA (up to 1920 x 1080)	
		Split	1st Screen: 1/4/8/9/16/25/36/64, 2nd Screen: 1/4/8/9/16/25/36	
		Mode	Single Source (Mirrored): HDMI1@4K, HDMI2@4K, HDMI3@8K, HDMI4@1080p, VGA1@1080p, VGA2@1080p Multiple Sources (Up to 4 sources): HDMI1@4K + VGA1@1080p (mirror), HDMI2@4K + VGA2@1080p (mirror), HDMI3@4K, HDMI4@1080p	
	Network	Input	2 x 2500Mbps Ethernet	
		Functions Mode	HTTP, TCP/IP, IPv4/IPv6, UPNP, RTSP, UDP, SMTP, NTP, DHCP, DNS, IP Filter, PPPOE, DDNS, FTP, Alarm Server, IP Search, Easy4ip Multi-address mode, load balance, fault tolerance & other network port binding modes	
USB & Other Inputs	2 x Front USB 2.0, 2 x Rear USB 3.0 / 1 x RS-485 A/B, 1 x RS-232, 1 x eSATA			
Artificial Intelligence	NVR Operated AI	Face Detection, Face Recognition, AI Human/Vehicle Detection, Video Metadata		
	Supported Camera AI	Face Detection, Face Recognition, AI Human/Vehicle Detection, ANPR, People Counting, Heatmap, Video Metadata		
	Face Detection	Functions	Gender, Age Group, Glasses, Expressions, Face Mask, Beard	
		By NVR By Camera	4 channels (up to 12 face images per second, per channel) 64 channels	
	Face Recognition	Capacity	NVR Supports up to 40 face databases and 300,000 face images	
		By NVR By Camera	4 channels (Face detection via NVR video stream analysis; Face recognition performed by NVR) 20 channels (Face detection performed via Face Capture cameras via image stream; Face recognition performed via NVR) 64 channels	
	Human/ Vehicle Detection	Functions	AI Tripwire & Intrusion (IVS), AI Motion Detection (SMD)	
		By NVR By Camera	IVS: 24 channels (10 rules per channel), SMD: 32 channels IVS: 64 channels, SMD: 64 channels	
	ANPR	Functions	Up to 20,000 plate numbers, blocklist & allowlist	
		By Camera	32 channels	
	Video Metadata	Functions	People (clothing colour, hat, bag, umbrella, etc.), Vehicle (vehicle colour, vehicle model, number plate, etc.)	
		By NVR By Camera	8 channels 32 channels	
Environment	Power Supply	100-240 VAC / 50-60 Hz		
	Power Consumption	≤ 18W (without HDD)		
	Operating Environment	-10°C ~ +55°C / 10 ~ 93%RH		
	Dimensions / Rack Units	440mm x 460mm x 95mm / 2U		
Weight	6.4kg (without HDD)			
Additional Information	Product Diagrams			

Your local VIP Vision™ IP solutions professional:

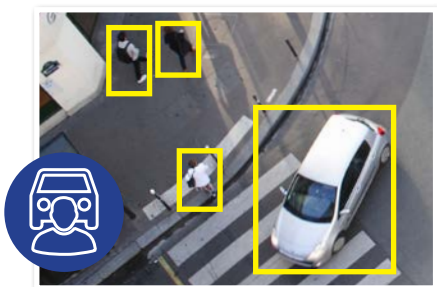


AI surveillance for SMBs.

Professional AI Series: NVR available in 8 channels with 8 port PoE

Transform the way you secure your home or small business with VIP Vision™ Professional AI Series Network Video Recorders. Use superb accuracy AI detection to take the guesswork out searching footage and get important AI video notifications as they happen. Experience peace of mind with capacity for months of footage storage and integrate a huge range of cameras to protect what's most important to you.

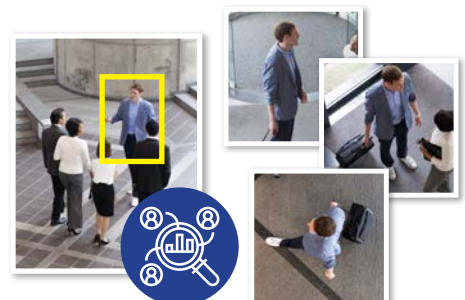
- Record up to 16.0MP with H.265 video compression
- Up to 256Mbps bandwidth (180Mbps AI enabled)
- Suite of AI functions for improved alerts & playback
- Supports AI face detection and recognition via NVR
- Supports AI human/vehicle detection via NVR
- Supports ANPR by camera up to 4 channels
- 2 x SATA bay with HDD support up to 16TB/bay
- Built-in 8 port Power over Ethernet switch
- HDMI (4K) and VGA simultaneous video output
- Backup via external USB device or local network



AI Human & Vehicle Detection



AI Face Detection & Recognition



Find Footage with AI Quick Search

		NVR8PRO-1		
General	Video Input	8 channels		
	Processor & Operation	Industrial-grade processor, Embedded Linux OS, Web Interface / Local GUI		
	Interoperability	ONVIF 21.12(Profile T; Profile S; Profile G); CGI; SDK. Supports Panasonic, Sony, Samsung, Axis, Pelco, Arecont, Canon. Chrome, IE9 and later, Firefox support.		
	App Integration	iOS / Android		
Recording	Recording Resolution	Configurable from 16.0MP (4920 x 3264) to CIF (352 x 288)		
	Network Bandwidth	AI Disabled	256Mbps (incoming/recording/outgoing)	
		AI Enabled	180Mbps (incoming/recording/outgoing)	
	Video & Audio Compression	Video: Smart H.265+ / H.265 / H.264 / H.264+ / MJPEG, Audio: G.711a / G.711u / PCM / G726		
	Playback	Channels	Up to 8 channels	
		Modes	General Recording, Motion Detection, Intelligent Events, Alarm Triggers	
	Decoding Capacity	AI Disabled	4CH@8.0MP/25fps, 8CH@4.0MP/25fps	
AI Enabled		8CH@1080p/25fps		
Backup Method	USB device / Network			
Interface	HDD	2 x SATA bays, up to 16TB per bay		
	Audio	1 channel input (RCA), 1 channel output (RCA)		
	Alarm	Interface	4 channels input, 2 channels output	
		Types	General (motion, video loss, scene change, etc.), Anomalies (camera disconnect, disk full, IP conflict , etc.), Intelligent (AI alerts, face, human/vehicle, etc.)	
		Actions	Begin record, take snapshot, camera external alarm output, audio, buzzer, NVR log, camera preset, email	
	Display	Input	1 x HDMI (up to 3840 x 2160), 1 x VGA (up to 1920 x 1080)	
		Split	1st & 2nd Screens: 1/4/8/9	
	Network	Input	1 x 1000Mbps Ethernet uplink, 8 x PoE 100Mbps (802.3af/at)	
		Functions	HTTP, TCP/IP, IPv4/IPv6, UPNP, RTSP, UDP, SMTP, NTP, DHCP, DNS, IP Filter, PPPoE, DDNS, FTP, Alarm Server, IP Search, Easy4ip	
	USB	1 x Front USB 2.0, 1 x Rear USB 2.0		
Artificial Intelligence	NVR Operated AI	Face Detection, Face Recognition, AI Human/Vehicle Detection		
	Supported Camera AI	Face Detection, Face Recognition, AI Human/Vehicle Detection, ANPR, People Counting, Heatmap		
	Face Detection	Functions	Gender, Age Group, Glasses, Expressions, Face Mask, Beard	
		By NVR	1 channel (up to 12 face images per second, per channel)	
	Face Recognition	By Camera	8 channels	
		Capacity	NVR Supports up to 10 face databases and 200,000 face images	
		By NVR	1 channel (Face detection via NVR video stream analysis; Face recognition performed by NVR)	
	Human/Vehicle Detection	By Camera	8 channels (Face detection performed via Face Capture cameras via image stream; Face recognition performed via NVR)	
		By Camera	8 channels	
		Functions	AI Tripwire & Intrusion (IVS), AI Motion Detection (SMD)	
ANPR	By NVR	IVS: 2 channels (10 rules per channel), SMD: 4 channels		
	By Camera	IVS: 8 channels, SMD: 8 channels		
Environment	Power Supply	100~240VAC / 47~63 Hz		
	Power Consumption	<10W (without HDD) / PoE: Max 25.5W for single port, 72W total		
	Operating Environment	-10°C ~ +55°C / 10 ~ 93%RH		
	Dimensions / Rack Units	375mm x 329mm x 53mm / 1RU		
	Weight	2.51kg (without HDD)		
Additional Information	Product Diagrams			
		<p>1 Power Input 2 Power Switch</p> <p>3 PoE Ports 4 Network Port</p> <p>5 VGA Port 6 AUDIO OUT, RCA Connector</p> <p>7 AUDIO IN, RCA Connector 8 HDMI Port</p> <p>9 USB Port 10 Alarm Input/Output</p> <p>11 Ground</p>		

Your local VIP Vision™ IP solutions professional:



AI People & Vehicle Detection

Face Recognition

AI Quick Search

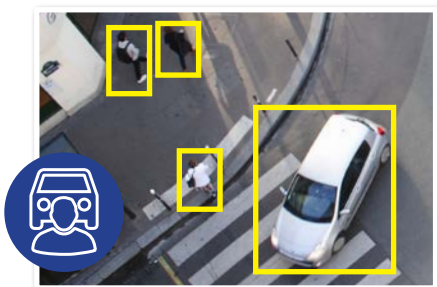


AI surveillance for business.

Professional AI Series: NVR available in 16 & 32 channels with 16 port PoE

Transform the way you secure your home or small business with VIP Vision™ Professional AI Series Network Video Recorders. Use superb accuracy AI detection to take the guesswork out searching footage and get important AI video notifications as they happen. Experience peace of mind with capacity for months of footage storage and integrate a huge range of cameras to protect what's most important to you.

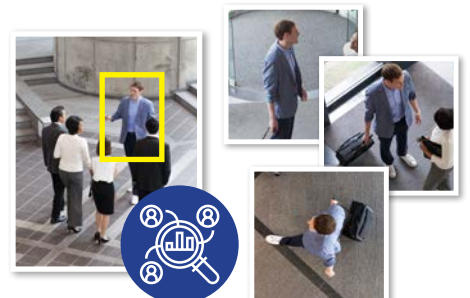
- Record up to 32.0MP with H.265 video compression
- Up to 384Mbps bandwidth (200Mbps AI enabled)
- Suite of AI functions for improved alerts & playback
- Supports AI face detection and recognition via NVR
- Supports AI human/vehicle detection via NVR
- Supports ANPR by camera up to 4 channels
- 4 x SATA bay with HDD support up to 16TB/bay
- Built-in 16 port Power over Ethernet switch
- HDMI (4K) and VGA simultaneous video output
- Backup via external USB device or local network



AI Human & Vehicle Detection



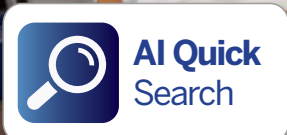
AI Face Detection & Recognition



Find Footage with AI Quick Search

		NVR16PRO16P-I3	NVR32PRO16P-I3	
General	Video Input	16 channel	32 channel	
	Processor & Operation	Industrial-grade processor, Embedded Linux OS, Web Interface / Local GUI		
	Interoperability	ONVIF 21.12(Profile T; Profile S; Profile G); CGI; SDK. Supports Panasonic, Sony, Samsung, Axis, Pelco, Arecont, Canon. Chrome, IE9 and later, Firefox support.		
	App Integration	iOS / Android		
Recording	Recording Resolution	Configurable from 32.0MP (6528 x 4896) to QCIF (176 x 144)		
	Network Bandwidth	AI Disabled	384Mbps (incoming/recording/outgoing)	
		AI Enabled	200Mbps (incoming/recording/outgoing)	
	Video & Audio Compression	Video: Smart H.265+ / H.265 / H.264 / H.264+ / MJPEG, Audio: G.711a / G.711u / PCM / G726		
	Playback	Channels	Up to 16 channels	
		Modes	General Recording, Motion Detection, Intelligent Events, Alarm Triggers, Point of Sale (POS events)	
Decoding Capacity	AI Disabled	8CH@8.0MP/25fps, 16CH@4.0MP/25fps	8CH@8.0MP/25fps, 32CH@1080P/25fps	
	AI Enabled	12CH@4.0MP/25fps	24CH@1080P/25fps	
Backup Method	USB device / Network / eSATA			
Interface	HDD	4 x SATA bays, up to 16TB per bay		
	Audio	1 channel input (RCA), 2 channel output (RCA)		
	Alarm	Interface	16 channels input, 6 channels output	
		Types	General (motion, video loss, scene change, etc.), Anomalies (camera disconnect, disk full, IP conflict , etc.), Intelligent (AI alerts, face, human/vehicle, etc.)	
		Actions	Begin record, take snapshot, camera external alarm output, access controller, audio, buzzer, NVR log, camera preset, email	
	Display	Input	2 x HDMI (up to 3840 x 2160), 2 x VGA (up to 1920 x 1080)	
		Split	1st & 2nd Screens: 1/4/8/9/16	1st Screen: 1/4/8/9/16/25/36, 2nd Screen: 1/4/8/9/16
	Network	Input	1 x 1000Mbps Ethernet uplink, 16 x PoE 100Mbps (802.3af/at), ports 1-8 supports ePoE	
		Functions	HTTP, TCP/IP, IPv4/IPv6, UPNP, RTSP, UDP, SMTP, NTP, DHCP, DNS, IP Filter, PPPOE, DDNS, FTP, Alarm Server, IP Search, Easy4ip	
	USB & Other Inputs	1 x Front USB 2.0, 2 x Rear USB 3.0 / 1 x RS-485, 1 x RS-232, 1 x eSATA		
NVR Operated AI	Face Detection, Face Recognition, AI Human/Vehicle Detection			
Supported Camera AI	Face Detection, Face Recognition, AI Human/Vehicle Detection, ANPR, People Counting, Heatmap, Video Metadata			
Artificial Intelligence	Face Detection	Functions	Gender, Age Group, Glasses, Expressions, Face Mask, Beard	
		By NVR	2 channels (up to 12 face images per second, per channel)	
	Face Recognition	By Camera	16 channels	
		Capacity	NVR Supports up to 20 face databases and 20,000 face images	
		By NVR	2 channels (Face detection via NVR video stream analysis; Face recognition performed by NVR)	
	Human/Vehicle Detection	By Camera	16 channels (Face detection performed via Face Capture cameras via image stream; Face recognition performed via NVR)	
		Functions	AI Tripwire & Intrusion (IVS), AI Motion Detection (SMD)	
	ANPR	By NVR	IVS: 4 channels (10 rules per channel), SMD: 8 channels	
By Camera		IVS: 16 channels, SMD: 16 channels		
Video Metadata	Functions	Up to 20,000 plate numbers, blacklist & allowlist		
	By Camera	8 channels		
Environment	Power Supply	100-240 VAC / 50-60 Hz		
	Power Consumption	≤ 13W (without HDD) / PoE: Max 25.5W for single port, 130W total		
	Operating Environment	-10°C ~ +55°C / 10 ~ 93%RH		
	Dimensions / Rack Units	440mm × 415mm × 70mm / 1.5U		
	Weight	4.82kg (without HDD)		
Additional Information	Product Diagrams			

Your local VIP Vision™ IP solutions professional:

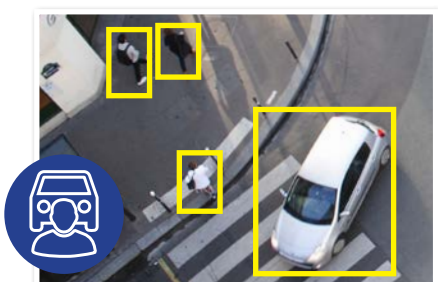


AI surveillance for business.

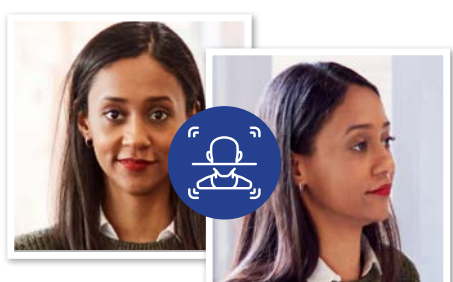
Professional AI Series: NVR available in 32 & 64 channels

Transform the way you secure your home or small business with VIP Vision™ Professional AI Series Network Video Recorders. Use superb accuracy AI detection to take the guesswork out searching footage and get important AI video notifications as they happen. Experience peace of mind with capacity for months of footage storage and integrate a huge range of cameras to protect what's most important to you.

- Record up to 32.0MP with H.265 video compression
- Up to 384Mbps bandwidth (200Mbps AI enabled)
- Suite of AI functions for improved alerts & playback
- Supports AI face detection and recognition via NVR
- Supports AI human/vehicle detection via NVR
- Supports ANPR by camera up to 4 channels
- Up to 8 x SATA bay (HDD support), up to 16TB/bay
- HDMI (4K) and VGA simultaneous video output
- Backup via external USB device or local network
- 2 x 1000Mbps Ethernet network input



AI Human & Vehicle Detection



AI Face Detection & Recognition



Find Footage with AI Quick Search

		NVR32PRO-13	NVR64PRO-13										
General	Video Input	32 channel	64 channel										
	Processor & Operation	Industrial-grade processor, Embedded Linux OS, Web Interface / Local GUI											
	Interoperability	ONVIF 21.12(Profile T; Profile S; Profile G); CGI; SDK. Supports Panasonic, Sony, Samsung, Axis, Pelco, Arecont, Canon. Chrome, IE9 and later, Firefox support.											
App Integration		iOS / Android											
Recording	Recording Resolution	Configurable from 32.0MP (6528 x 4896) to QCIF (176 x 144)											
	Network Bandwidth	AI Disabled	384Mbps (incoming/recording/outgoing)										
		AI Enabled	200Mbps (incoming/recording/outgoing)										
	Video & Audio Compression		Video: Smart H.265+ / H.265 / H.264 / H.264+ / MJPEG, Audio: G.711a / G.711u / PCM / G726										
	Playback	Channels	Up to 16 channels										
		Modes	General Recording, Motion Detection, Intelligent Events, Alarm Triggers, POS										
Decoding Capacity	AI Disabled	8CH@8.0MP/25fps, 32CH@1080P/25fps											
	AI Enabled	24CH@1080p/25fps											
Backup Method		USB device / Network / eSATA											
Interface	HDD	4 x SATA bays, up to 16TB per bay	8 x SATA bays, up to 16TB per bay										
	Audio		1 channel input (RCA), 2 channel output (RCA)										
	Alarm	Interface	16 channels input, 6 channels output	16 channels input, 8 channels output									
		Types	General (motion, video loss, scene change, etc.), Anomalies (camera disconnect, disk full, IP conflict, etc.), Intelligent (AI alerts, face, human/vehicle, etc.)										
		Actions	Begin record, take snapshot, camera external alarm output, access controller, audio, buzzer, NVR log, camera preset, email										
	Display	Input	2 x HDMI (up to 3840 x 2160), 2 x VGA (up to 1920 x 1080)										
		Split	1st Screen: 1/4/8/9/16/25/36, 2nd Screens: 1/4/8/9/16	1st Screen: 1/4/8/9/16/25/36/64, 2nd Screens: 1/4/8/9/16									
	Network	Input	2 x 1000Mbps Ethernet										
		Functions	HTTP, TCP/IP, IPv4/IPv6, UPNP, RTSP, UDP, SMTP, NTP, DHCP, DNS, IP Filter, PPPoE, DDNS, FTP, Alarm Server, IP Search, Easy4ip										
	USB & Other Inputs		1 x Front USB 2.0, 2 x Rear USB 3.0 1 x RS-485, 1 x RS-232, 1 x eSATA	2 x Front USB 2.0, 2 x Rear USB 3.0 / 2 x RS485, 1 x RS-232, 1 x eSATA									
NVR Operated AI		Face Detection, Face Recognition, AI Human/Vehicle Detection											
Supported Camera AI		Face Detection, Face Recognition, AI Human/Vehicle Detection, ANPR, People Counting, Heatmap, Video Metadata											
Artificial Intelligence	Face Detection	Functions	Gender, Age Group, Glasses, Expressions, Face Mask, Beard										
		By NVR	2 channels (up to 12 face images per second, per channel)										
	By Camera	16 channels											
	Face Recognition	Capacity	NVR Supports up to 20 face databases and 20,000 face images										
		By NVR	2 channels (Face detection via NVR video stream analysis; Face recognition performed by NVR)										
		By Camera	16 channels (Face detection performed via Face Capture cameras via image stream; Face recognition performed via NVR)										
	Human/Vehicle Detection	Functions	AI Tripwire & Intrusion (IVS), AI Motion Detection (SMD)										
		By NVR	IVS: 4 channels (10 rules per channel), SMD: 8 channels										
By Camera		IVS: 16 channels, SMD: 16 channels											
ANPR	Functions	Up to 20,000 plate numbers, blacklist & allowlist											
	By Camera	8 channels											
Video Metadata	Functions	People (clothing colour, hat, bag, umbrella, etc.), Vehicle (vehicle colour, vehicle model, number plate, etc.)											
	By Camera	8 channels											
Environment	Power Supply	100-240 VAC / 50-60 Hz											
	Power Consumption	≤ 13W (without HDD)											
	Operating Environment	-10°C ~ +55°C / 10 ~ 93%RH											
	Dimensions / Rack Units	440mm × 415mm × 70mm / 1.5U	440mm × 458mm × 89mm / 2U										
Weight		4.74kg (without HDD)	6.4kg (without HDD)										
Additional Information	Product Diagrams												
		<table border="0"> <tr> <td>1 Power Input</td> <td>2 Network Ports</td> </tr> <tr> <td>3 eSATA Port</td> <td>4 HDMI Ports</td> </tr> <tr> <td>5 USB Ports</td> <td>6 VGA Ports</td> </tr> <tr> <td>7 MIC IN, RCA Connector</td> <td>8 Power Switch</td> </tr> <tr> <td>9 Alarm In/Out</td> <td>10 RS-232 Port</td> </tr> <tr> <td>11 MIC OUT, RCA Connector</td> <td></td> </tr> </table>		1 Power Input	2 Network Ports	3 eSATA Port	4 HDMI Ports	5 USB Ports	6 VGA Ports	7 MIC IN, RCA Connector	8 Power Switch	9 Alarm In/Out	10 RS-232 Port
1 Power Input	2 Network Ports												
3 eSATA Port	4 HDMI Ports												
5 USB Ports	6 VGA Ports												
7 MIC IN, RCA Connector	8 Power Switch												
9 Alarm In/Out	10 RS-232 Port												
11 MIC OUT, RCA Connector													

Your local VIP Vision™ IP solutions professional: