



AI People
& Vehicle
Detection



Face Recognition



AI Quick
Search

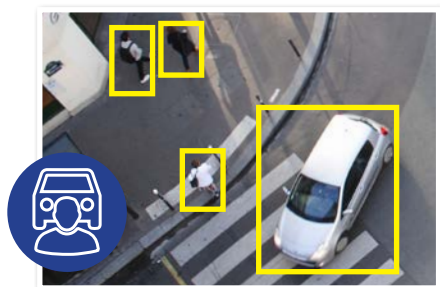


Enterprise AI surveillance.

Ultimate AI Series: NVRs available in 64 and 128 channel

Monitor your enterprise's operations with ease using the VIP Vision™ Ultimate AI Series Network Video Recorder. Enjoy accurate video notifications and seamless footage search powered by advanced AI. Simultaneously connect more users with 2.5GBps Ethernet input for a better user experience. Protect what's most important to you by integrating a wide range of cameras and benefit from ample footage storage.

- Record up to 32.0MP with H.265 video compression
- Up to 1024Mbps bandwidth (800Mbps outgoing)
- Suite of AI functions for improved alerts & playback
- Supports AI face detection and recognition via NVR
- Supports AI human/vehicle detection via NVR
- Supports ANPR by camera up to 32 channels
- 8 x SATA bay with HDD support up to 16TB/bay
- Backup via external USB device or local network
- Supports 2 x 2.5GBps Ethernet network input
- Decode up to 64 channels at 720p (fps)



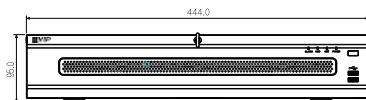
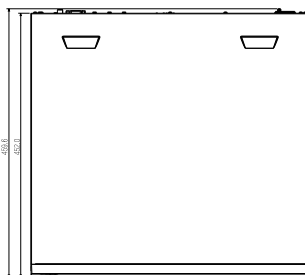
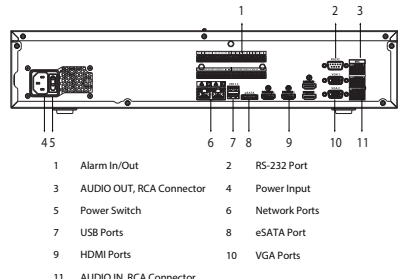
AI Human & Vehicle Detection



AI Face Detection & Recognition



Find Footage with AI Quick Search

		NVR64ULT-I	NVR128ULT-I	
General	Video Input		64 channel	128 channel
	Processor & Operation		Industrial-grade processor, Embedded Linux OS, Web Interface / Local GUI	
	Interoperability		ONVIF (Profile T; Profile S; Profile G); CGI; SDK. Supports RTSP, Sony, Samsung, Axis, Pelco, Arecont, Canon. Chrome, IE9 and later, Firefox support.	
	App Integration		iOS / Android	
Recording	Recording Resolution		Configurable from 32.0MP (6528 x 4896) to D1 (704 x 576)	
	Network Bandwidth	AI Disabled	1024Mbps (incoming/recording), 800Mbps (outgoing)	
		AI Enabled	512Mbps (incoming/recording), 400Mbps outgoing	
	Video & Audio Compression		Video: Smart H.265+ / H.265 / H.264 / H.264+ / MJPEG / MPEG4, Audio: G.711a / G.711u / PCM / G726	
	Playback	Channels	Up to 16 channels	
		Modes	General Recording, Motion Detection, Intelligent Events, Alarm Triggers	
	Decoding Capacity	AI Disabled	8CH@8.0MP/25fps, 64CH@720P/25fps	
AI Enabled		8CH@8.0MP/25fps, 128CH@D1/25fps		
Backup Method		Portable hard drive / Burner / USB device / Network / eSATA		
HDD		8 x SATA bays up to 16TB per bay, RAID 0/1/5/6/10, Hot swapping		
Audio		1 channel input (RCA), 2 channel output (RCA)		
Interface	Alarm	Interface	16 channels input, 8 channels output	
		Types	General (motion, video loss, scene change, etc.), Anomalies (camera disconnect, disk full, IP conflict , etc.), Intelligent (AI alerts, face, human/vehicle, etc.)	
		Actions	Begin record, take snapshot, camera external alarm output, audio, buzzer, NVR log, camera preset, email	
	Display	Input	4 x HDMI (up to 3840 x 2160), 2 x VGA (up to 1920 x 1080)	
		Split	1st Screen: 1/4/8/9/16/25/36/64, 2nd Screen: 1/4/8/9/16/25/36	
		Mode	Single Source (Mirrored): HDMI1@4K, HDMI2@4K, HDMI3@8K, HDMI4@1080p, VGA1@1080p, VGA2@1080p Multiple Sources (Up to 4 sources): HDMI1@4K + VGA1@1080p (mirror), HDMI2@4K + VGA2@1080p (mirror), HDMI3@4K, HDMI4@1080p	
	Network	Input	2 x 2500Mbps Ethernet	
		Functions	HTTP, TCP/IP, IPv4/IPv6, UPNP, RTSP, UDP, SMTP, NTP, DHCP, DNS, IP Filter, PPPOE, DDNS, FTP, Alarm Server, IP Search, Easy4ip	
		Mode	Multi-address mode, load balance, fault tolerance & other network port binding modes	
	USB & Other Inputs		2 x Front USB 2.0, 2 x Rear USB 3.0 / 1 x RS-485 A/B, 1 x RS-232, 1 x eSATA	
Artificial Intelligence	NVR Operated AI		Face Detection, Face Recognition, AI Human/Vehicle Detection, Video Metadata	
	Supported Camera AI		Face Detection, Face Recognition, AI Human/Vehicle Detection, ANPR, People Counting, Heatmap, Video Metadata	
	Face Detection	Functions	Gender, Age Group, Glasses, Expressions, Face Mask, Beard	
		By NVR	4 channels (up to 12 face images per second, per channel)	
		By Camera	64 channels	
	Face Recognition	Capacity	NVR Supports up to 40 face databases and 300,000 face images	
		By NVR	4 channels (Face detection via NVR video stream analysis; Face recognition performed by NVR) 20 channels (Face detection performed via Face Capture cameras via image stream; Face recognition performed via NVR)	
		By Camera	64 channels	
	Human/Vehicle Detection	Functions	AI Tripwire & Intrusion (IVS), AI Motion Detection (SMD)	
		By NVR	IVS: 24 channels (10 rules per channel), SMD: 32 channels	
		By Camera	IVS: 64 channels, SMD: 64 channels	
	ANPR	Functions	Up to 20,000 plate numbers, blacklist & allowlist	
		By Camera	32 channels	
	Video Metadata	Functions	People (clothing colour, hat, bag, umbrella, etc.), Vehicle (vehicle colour, vehicle model, number plate, etc.)	
By NVR		8 channels		
By Camera		32 channels		
Environment	Power Supply		100–240 VAC / 50-60 Hz	
	Power Consumption		≤ 18W (without HDD)	
	Operating Environment		-10°C ~ +55°C / 10 ~ 93%RH	
	Dimensions / Rack Units		440mm × 460mm × 95mm / 2U	
	Weight		6.4kg (without HDD)	
Additional Information	Product Diagrams			
				
				

Your local VIP Vision™ IP solutions professional: