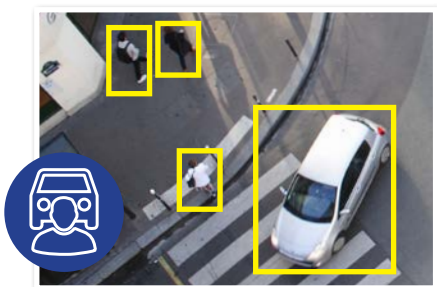


AI surveillance for SMBs.

Professional AI Series: NVR available in 8 channels with 8 port PoE

Transform the way you secure your home or small business with VIP Vision™ Professional AI Series Network Video Recorders. Use superb accuracy AI detection to take the guesswork out searching footage and get important AI video notifications as they happen. Experience peace of mind with capacity for months of footage storage and integrate a huge range of cameras to protect what's most important to you.

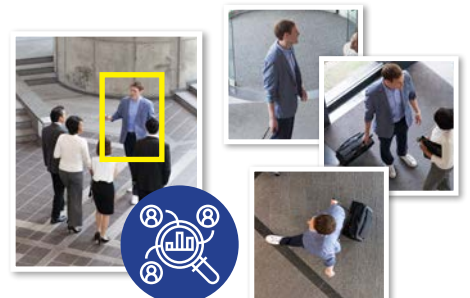
- Record up to 16.0MP with H.265 video compression
- Up to 256Mbps bandwidth (180Mbps AI enabled)
- Suite of AI functions for improved alerts & playback
- Supports AI face detection and recognition via NVR
- Supports AI human/vehicle detection via NVR
- Supports ANPR by camera up to 4 channels
- 2 x SATA bay with HDD support up to 16TB/bay
- Built-in 8 port Power over Ethernet switch
- HDMI (4K) and VGA simultaneous video output
- Backup via external USB device or local network



AI Human & Vehicle Detection



AI Face Detection & Recognition



Find Footage with AI Quick Search

| | | NVR8PRO-1 | | |
|-------------------------|---------------------------|---|--|--|
| General | Video Input | 8 channels | | |
| | Processor & Operation | Industrial-grade processor, Embedded Linux OS, Web Interface / Local GUI | | |
| | Interoperability | ONVIF 21.12(Profile T; Profile S; Profile G); CGI; SDK. Supports Panasonic, Sony, Samsung, Axis, Pelco, Arecont, Canon. Chrome, IE9 and later, Firefox support. | | |
| | App Integration | iOS / Android | | |
| Recording | Recording Resolution | Configurable from 16.0MP (4920 x 3264) to CIF (352 x 288) | | |
| | Network Bandwidth | AI Disabled | 256Mbps (incoming/recording/outgoing) | |
| | | AI Enabled | 180Mbps (incoming/recording/outgoing) | |
| | Video & Audio Compression | Video: Smart H.265+ / H.265 / H.264 / H.264+ / MJPEG, Audio: G.711a / G.711u / PCM / G726 | | |
| | Playback | Channels | Up to 8 channels | |
| | | Modes | General Recording, Motion Detection, Intelligent Events, Alarm Triggers | |
| | Decoding Capacity | AI Disabled | 4CH@8.0MP/25fps, 8CH@4.0MP/25fps | |
| AI Enabled | | 8CH@1080p/25fps | | |
| Backup Method | USB device / Network | | | |
| Interface | HDD | 2 x SATA bays, up to 16TB per bay | | |
| | Audio | 1 channel input (RCA), 1 channel output (RCA) | | |
| | Alarm | Interface | 4 channels input, 2 channels output | |
| | | Types | General (motion, video loss, scene change, etc.), Anomalies (camera disconnect, disk full, IP conflict , etc.), Intelligent (AI alerts, face, human/vehicle, etc.) | |
| | | Actions | Begin record, take snapshot, camera external alarm output, audio, buzzer, NVR log, camera preset, email | |
| | Display | Input | 1 x HDMI (up to 3840 x 2160), 1 x VGA (up to 1920 x 1080) | |
| | | Split | 1st & 2nd Screens: 1/4/8/9 | |
| | Network | Input | 1 x 1000Mbps Ethernet uplink, 8 x PoE 100Mbps (802.3af/at) | |
| | | Functions | HTTP, TCP/IP, IPv4/IPv6, UPNP, RTSP, UDP, SMTP, NTP, DHCP, DNS, IP Filter, PPPoE, DDNS, FTP, Alarm Server, IP Search, Easy4ip | |
| | USB | 1 x Front USB 2.0, 1 x Rear USB 2.0 | | |
| Artificial Intelligence | NVR Operated AI | Face Detection, Face Recognition, AI Human/Vehicle Detection | | |
| | Supported Camera AI | Face Detection, Face Recognition, AI Human/Vehicle Detection, ANPR, People Counting, Heatmap | | |
| | Face Detection | Functions | Gender, Age Group, Glasses, Expressions, Face Mask, Beard | |
| | | By NVR | 1 channel (up to 12 face images per second, per channel) | |
| | Face Recognition | By Camera | 8 channels | |
| | | Capacity | NVR Supports up to 10 face databases and 200,000 face images | |
| | | By NVR | 1 channel (Face detection via NVR video stream analysis; Face recognition performed by NVR) | |
| | Human/Vehicle Detection | By Camera | 8 channels (Face detection performed via Face Capture cameras via image stream; Face recognition performed via NVR) | |
| | | By Camera | 8 channels | |
| | ANPR | Functions | AI Tripwire & Intrusion (IVS), AI Motion Detection (SMD) | |
| By Camera | | IVS: 2 channels (10 rules per channel), SMD: 4 channels | | |
| ANPR | By Camera | IVS: 8 channels, SMD: 8 channels | | |
| | Functions | Up to 20,000 plate numbers, blacklist & allowlist | | |
| ANPR | By Camera | 4 channels | | |
| | By Camera | 4 channels | | |
| Environment | Power Supply | 100~240VAC / 47~63 Hz | | |
| | Power Consumption | <10W (without HDD) / PoE: Max 25.5W for single port, 72W total | | |
| | Operating Environment | -10°C ~ +55°C / 10 ~ 93%RH | | |
| | Dimensions / Rack Units | 375mm x 329mm x 53mm / 1RU | | |
| Weight | 2.51kg (without HDD) | | | |
| Additional Information | Product Diagrams | | | |
| | | <p>1 Power Input 2 Power Switch</p> <p>3 PoE Ports 4 Network Port</p> <p>5 VGA Port 6 AUDIO OUT, RCA Connector</p> <p>7 AUDIO IN, RCA Connector 8 HDMI Port</p> <p>9 USB Port 10 Alarm Input/Output</p> <p>11 Ground</p> | | |

Your local VIP Vision™ IP solutions professional:



AI People & Vehicle Detection

Face Recognition

AI Quick Search

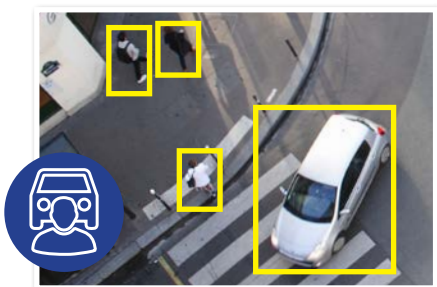


AI surveillance for business.

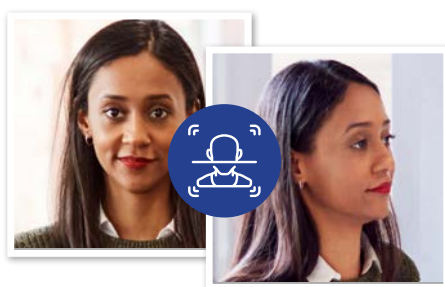
Professional AI Series: NVR available in 16 & 32 channels with 16 port PoE

Transform the way you secure your home or small business with VIP Vision™ Professional AI Series Network Video Recorders. Use superb accuracy AI detection to take the guesswork out searching footage and get important AI video notifications as they happen. Experience peace of mind with capacity for months of footage storage and integrate a huge range of cameras to protect what's most important to you.

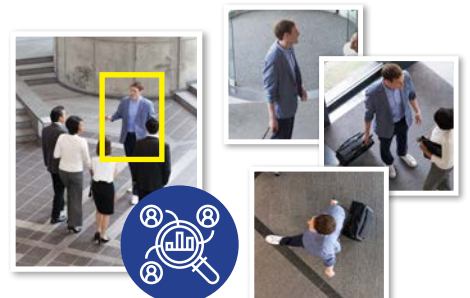
- Record up to 32.0MP with H.265 video compression
- Up to 384Mbps bandwidth (200Mbps AI enabled)
- Suite of AI functions for improved alerts & playback
- Supports AI face detection and recognition via NVR
- Supports AI human/vehicle detection via NVR
- Supports ANPR by camera up to 4 channels
- 4 x SATA bay with HDD support up to 16TB/bay
- Built-in 16 port Power over Ethernet switch
- HDMI (4K) and VGA simultaneous video output
- Backup via external USB device or local network



AI Human & Vehicle Detection



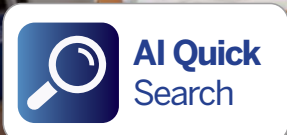
AI Face Detection & Recognition



Find Footage with AI Quick Search

| | | NVR16PRO16P-I3 | NVR32PRO16P-I3 | |
|-------------------------|--|---|--|--|
| General | Video Input | 16 channel | 32 channel | |
| | Processor & Operation | Industrial-grade processor, Embedded Linux OS, Web Interface / Local GUI | | |
| | Interoperability | ONVIF 21.12(Profile T; Profile S; Profile G); CGI; SDK. Supports Panasonic, Sony, Samsung, Axis, Pelco, Arecont, Canon. Chrome, IE9 and later, Firefox support. | | |
| | App Integration | iOS / Android | | |
| Recording | Recording Resolution | Configurable from 32.0MP (6528 x 4896) to QCIF (176 x 144) | | |
| | Network Bandwidth | AI Disabled | 384Mbps (incoming/recording/outgoing) | |
| | | AI Enabled | 200Mbps (incoming/recording/outgoing) | |
| | Video & Audio Compression | Video: Smart H.265+ / H.265 / H.264 / H.264+ / MJPEG, Audio: G.711a / G.711u / PCM / G726 | | |
| | Playback | Channels | Up to 16 channels | |
| | | Modes | General Recording, Motion Detection, Intelligent Events, Alarm Triggers, Point of Sale (POS events) | |
| Decoding Capacity | AI Disabled | 8CH@8.0MP/25fps, 16CH@4.0MP/25fps | 8CH@8.0MP/25fps, 32CH@1080P/25fps | |
| | AI Enabled | 12CH@4.0MP/25fps | 24CH@1080P/25fps | |
| Backup Method | USB device / Network / eSATA | | | |
| Interface | HDD | 4 x SATA bays, up to 16TB per bay | | |
| | Audio | 1 channel input (RCA), 2 channel output (RCA) | | |
| | Alarm | Interface | 16 channels input, 6 channels output | |
| | | Types | General (motion, video loss, scene change, etc.), Anomalies (camera disconnect, disk full, IP conflict , etc.), Intelligent (AI alerts, face, human/vehicle, etc.) | |
| | | Actions | Begin record, take snapshot, camera external alarm output, access controller, audio, buzzer, NVR log, camera preset, email | |
| | Display | Input | 2 x HDMI (up to 3840 x 2160), 2 x VGA (up to 1920 x 1080) | |
| | | Split | 1st & 2nd Screens: 1/4/8/9/16 | 1st Screen: 1/4/8/9/16/25/36, 2nd Screen: 1/4/8/9/16 |
| | Network | Input | 1 x 1000Mbps Ethernet uplink, 16 x PoE 100Mbps (802.3af/at), ports 1-8 supports ePoE | |
| | | Functions | HTTP, TCP/IP, IPv4/IPv6, UPNP, RTSP, UDP, SMTP, NTP, DHCP, DNS, IP Filter, PPPOE, DDNS, FTP, Alarm Server, IP Search, Easy4ip | |
| | USB & Other Inputs | 1 x Front USB 2.0, 2 x Rear USB 3.0 / 1 x RS-485, 1 x RS-232, 1 x eSATA | | |
| NVR Operated AI | Face Detection, Face Recognition, AI Human/Vehicle Detection | | | |
| Supported Camera AI | Face Detection, Face Recognition, AI Human/Vehicle Detection, ANPR, People Counting, Heatmap, Video Metadata | | | |
| Artificial Intelligence | Face Detection | Functions | Gender, Age Group, Glasses, Expressions, Face Mask, Beard | |
| | | By NVR | 2 channels (up to 12 face images per second, per channel) | |
| | | By Camera | 16 channels | |
| | Face Recognition | Capacity | NVR Supports up to 20 face databases and 20,000 face images | |
| | | By NVR | 2 channels (Face detection via NVR video stream analysis; Face recognition performed by NVR) | |
| | | By Camera | 16 channels (Face detection performed via Face Capture cameras via image stream; Face recognition performed via NVR) | |
| | Human/Vehicle Detection | Functions | AI Tripwire & Intrusion (IVS), AI Motion Detection (SMD) | |
| | | By NVR | IVS: 4 channels (10 rules per channel), SMD: 8 channels | |
| By Camera | | IVS: 16 channels, SMD: 16 channels | | |
| ANPR | Functions | Up to 20,000 plate numbers, blacklist & allowlist | | |
| | By Camera | 8 channels | | |
| Video Metadata | Functions | People (clothing colour, hat, bag, umbrella, etc.), Vehicle (vehicle colour, vehicle model, number plate, etc.) | | |
| | By Camera | 8 channels | | |
| Environment | Power Supply | 100-240 VAC / 50-60 Hz | | |
| | Power Consumption | ≤ 13W (without HDD) / PoE: Max 25.5W for single port, 130W total | | |
| | Operating Environment | -10°C ~ +55°C / 10 ~ 93%RH | | |
| | Dimensions / Rack Units | 440mm × 415mm × 70mm / 1.5U | | |
| Weight | 4.82kg (without HDD) | | | |
| Additional Information | Product Diagrams | | | |

Your local VIP Vision™ IP solutions professional:

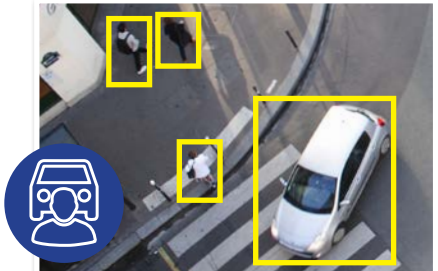


AI surveillance for business.

Professional AI Series: NVR available in 32 & 64 channels

Transform the way you secure your home or small business with VIP Vision™ Professional AI Series Network Video Recorders. Use superb accuracy AI detection to take the guesswork out searching footage and get important AI video notifications as they happen. Experience peace of mind with capacity for months of footage storage and integrate a huge range of cameras to protect what's most important to you.

- Record up to 32.0MP with H.265 video compression
- Up to 384Mbps bandwidth (200Mbps AI enabled)
- Suite of AI functions for improved alerts & playback
- Supports AI face detection and recognition via NVR
- Supports AI human/vehicle detection via NVR
- Supports ANPR by camera up to 4 channels
- Up to 8 x SATA bay (HDD support), up to 16TB/bay
- HDMI (4K) and VGA simultaneous video output
- Backup via external USB device or local network
- 2 x 1000Mbps Ethernet network input



AI Human & Vehicle Detection



AI Face Detection & Recognition



Find Footage with AI Quick Search

| | | NVR32PRO-13 | NVR64PRO-13 | | | | | | | | | | |
|---------------------------|---------------------------|---|---|--|-----------------|--------------|--------------|-------------|-------------|-------------------------|----------------|----------------|----------------|
| General | Video Input | 32 channel | 64 channel | | | | | | | | | | |
| | Processor & Operation | Industrial-grade processor, Embedded Linux OS, Web Interface / Local GUI | | | | | | | | | | | |
| | Interoperability | ONVIF 21.12(Profile T; Profile S; Profile G); CGI; SDK. Supports Panasonic, Sony, Samsung, Axis, Pelco, Arecont, Canon. Chrome, IE9 and later, Firefox support. | | | | | | | | | | | |
| App Integration | | iOS / Android | | | | | | | | | | | |
| Recording | Recording Resolution | Configurable from 32.0MP (6528 x 4896) to QCIF (176 x 144) | | | | | | | | | | | |
| | Network Bandwidth | AI Disabled | 384Mbps (incoming/recording/outgoing) | | | | | | | | | | |
| | | AI Enabled | 200Mbps (incoming/recording/outgoing) | | | | | | | | | | |
| | Video & Audio Compression | | Video: Smart H.265+ / H.265 / H.264 / H.264+ / MJPEG, Audio: G.711a / G.711u / PCM / G726 | | | | | | | | | | |
| | Playback | Channels | Up to 16 channels | | | | | | | | | | |
| | | Modes | General Recording, Motion Detection, Intelligent Events, Alarm Triggers, POS | | | | | | | | | | |
| Decoding Capacity | AI Disabled | 8CH@8.0MP/25fps, 32CH@1080P/25fps | | | | | | | | | | | |
| | AI Enabled | 24CH@1080p/25fps | | | | | | | | | | | |
| Backup Method | | USB device / Network / eSATA | | | | | | | | | | | |
| Interface | HDD | 4 x SATA bays, up to 16TB per bay | 8 x SATA bays, up to 16TB per bay | | | | | | | | | | |
| | Audio | | 1 channel input (RCA), 2 channel output (RCA) | | | | | | | | | | |
| | Alarm | Interface | 16 channels input, 6 channels output | 16 channels input, 8 channels output | | | | | | | | | |
| | | Types | General (motion, video loss, scene change, etc.), Anomalies (camera disconnect, disk full, IP conflict, etc.), Intelligent (AI alerts, face, human/vehicle, etc.) | | | | | | | | | | |
| | | Actions | Begin record, take snapshot, camera external alarm output, access controller, audio, buzzer, NVR log, camera preset, email | | | | | | | | | | |
| | Display | Input | 2 x HDMI (up to 3840 x 2160), 2 x VGA (up to 1920 x 1080) | | | | | | | | | | |
| | | Split | 1st Screen: 1/4/8/9/16/25/36, 2nd Screens: 1/4/8/9/16 | 1st Screen: 1/4/8/9/16/25/36/64, 2nd Screens: 1/4/8/9/16 | | | | | | | | | |
| | Network | Input | 2 x 1000Mbps Ethernet | | | | | | | | | | |
| | | Functions | HTTP, TCP/IP, IPv4/IPv6, UPNP, RTSP, UDP, SMTP, NTP, DHCP, DNS, IP Filter, PPPoE, DDNS, FTP, Alarm Server, IP Search, Easy4ip | | | | | | | | | | |
| | USB & Other Inputs | | 1 x Front USB 2.0, 2 x Rear USB 3.0 1 x RS-485, 1 x RS-232, 1 x eSATA | 2 x Front USB 2.0, 2 x Rear USB 3.0 / 2 x RS485, 1 x RS-232, 1 x eSATA | | | | | | | | | |
| NVR Operated AI | | Face Detection, Face Recognition, AI Human/Vehicle Detection | | | | | | | | | | | |
| Supported Camera AI | | Face Detection, Face Recognition, AI Human/Vehicle Detection, ANPR, People Counting, Heatmap, Video Metadata | | | | | | | | | | | |
| Artificial Intelligence | Face Detection | Functions | Gender, Age Group, Glasses, Expressions, Face Mask, Beard | | | | | | | | | | |
| | | By NVR | 2 channels (up to 12 face images per second, per channel) | | | | | | | | | | |
| | By Camera | 16 channels | | | | | | | | | | | |
| | Face Recognition | Capacity | NVR Supports up to 20 face databases and 20,000 face images | | | | | | | | | | |
| | | By NVR | 2 channels (Face detection via NVR video stream analysis; Face recognition performed by NVR) | | | | | | | | | | |
| | | By Camera | 16 channels (Face detection performed via Face Capture cameras via image stream; Face recognition performed via NVR) | | | | | | | | | | |
| | Human/Vehicle Detection | Functions | AI Tripwire & Intrusion (IVS), AI Motion Detection (SMD) | | | | | | | | | | |
| | | By NVR | IVS: 4 channels (10 rules per channel), SMD: 8 channels | | | | | | | | | | |
| By Camera | | IVS: 16 channels, SMD: 16 channels | | | | | | | | | | | |
| ANPR | Functions | Up to 20,000 plate numbers, blacklist & allowlist | | | | | | | | | | | |
| | By Camera | 8 channels | | | | | | | | | | | |
| Video Metadata | Functions | People (clothing colour, hat, bag, umbrella, etc.), Vehicle (vehicle colour, vehicle model, number plate, etc.) | | | | | | | | | | | |
| | By Camera | 8 channels | | | | | | | | | | | |
| Environment | Power Supply | 100-240 VAC / 50-60 Hz | | | | | | | | | | | |
| | Power Consumption | ≤ 13W (without HDD) | | | | | | | | | | | |
| | Operating Environment | -10°C ~ +55°C / 10 ~ 93%RH | | | | | | | | | | | |
| | Dimensions / Rack Units | 440mm × 415mm × 70mm / 1.5U | 440mm × 458mm × 89mm / 2U | | | | | | | | | | |
| Weight | | 4.74kg (without HDD) | 6.4kg (without HDD) | | | | | | | | | | |
| Additional Information | Product Diagrams | | | | | | | | | | | | |
| | | <table border="0"> <tr> <td>1 Power Input</td> <td>2 Network Ports</td> </tr> <tr> <td>3 eSATA Port</td> <td>4 HDMI Ports</td> </tr> <tr> <td>5 USB Ports</td> <td>6 VGA Ports</td> </tr> <tr> <td>7 MIC IN, RCA Connector</td> <td>8 Power Switch</td> </tr> <tr> <td>9 Alarm In/Out</td> <td>10 RS-232 Port</td> </tr> <tr> <td>11 MIC OUT, RCA Connector</td> <td></td> </tr> </table> | | 1 Power Input | 2 Network Ports | 3 eSATA Port | 4 HDMI Ports | 5 USB Ports | 6 VGA Ports | 7 MIC IN, RCA Connector | 8 Power Switch | 9 Alarm In/Out | 10 RS-232 Port |
| 1 Power Input | 2 Network Ports | | | | | | | | | | | | |
| 3 eSATA Port | 4 HDMI Ports | | | | | | | | | | | | |
| 5 USB Ports | 6 VGA Ports | | | | | | | | | | | | |
| 7 MIC IN, RCA Connector | 8 Power Switch | | | | | | | | | | | | |
| 9 Alarm In/Out | 10 RS-232 Port | | | | | | | | | | | | |
| 11 MIC OUT, RCA Connector | | | | | | | | | | | | | |

Your local VIP Vision™ IP solutions professional: