



AI Scene Adaptive

AI People & Vehicle Detection Gen. 2

8.0 MEGAPIXEL

6.0 MEGAPIXEL

4.0 MEGAPIXEL

Identify people & vehicles.

Professional AI Series: Fixed AI bullet cameras in 4.0MP, 6.0MP & 8.0MP

The Professional AI Series utilises the latest in AI machine learning technology to identify people & vehicles with superior accuracy and reliability. Experience improved AI performance with Smart Motion Detection (SMD 4.0) that minimises false triggers and detects humans & vehicles with a 99% accuracy rate. AI Smart Scene Adaptive (AI SSA) detects and adjusts for fog, glare, low light and rain to ensure capture of clear video evidence.

- Stream up to 8.0MP (3840 x 2160) at 25fps
- H.265 encoding for efficient storage & streaming
- Up to 50m infrared range; true day/night (auto ICR)
- Back/highlight compensation & true WDR (120dB)
- MicroSD slot for recording at the edge up to 256GB
- AI weather and anti-flicker scene self-adaption
- Smart Motion Detection (SMD 4.0) for person detection (up to 12m) and vehicle detection (up to 18m)
- 3D digital noise reduction & auto white balance
- IP67 weather rated housing for outdoor use



Record up to 4K in Real Time (25fps)



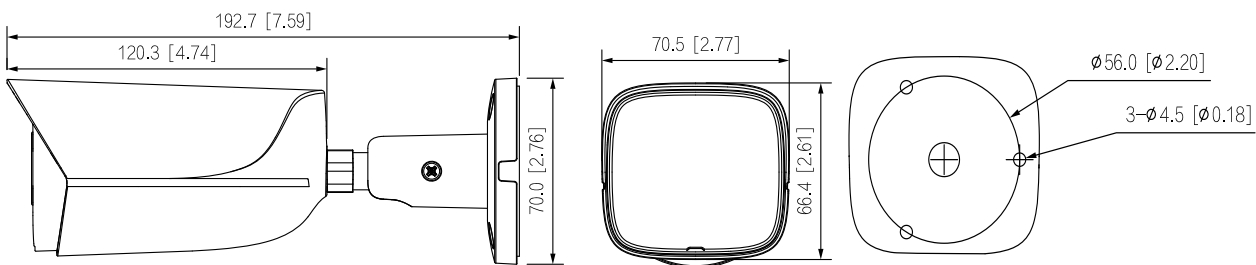
Smart Person & Vehicle Detection



AI Scene Adaptation

Specifications	4.0MP Fixed AI Bullet	6.0MP Fixed AI Bullet	8.0MP Fixed AI Bullet
Ordering Information	VSIPP-4BIRG-I2	VSIPP-6BIRG-I2	VSIPP-8BIRG-I2
Image Sensor	1/3" 4.0MP Progressive Scan CMOS	1/2.7" 6.0MP Progressive Scan CMOS	1/2.8" 8.0MP Progressive Scan CMOS
Effective Pixels	2688 (H) x 1520 (V)	3072 (H) x 2048 (V)	3840 (H) x 2160 (V)
RAM / ROM	512MB / 128MB	1GB / 128MB	1GB / 128MB
Min Illumination	0.005 Lux/F1.4 (Color)	0.005 Lux/F1.4 (Color)	0.007 Lux/F1.4 (Color)
S/N Ratio	> 56dB		
Infrared System	1 x Infrared LED, 50m range, Auto/manual on/off control	1 x Infrared LED, 30m range, Auto/manual on/off control	1 x Infrared LED, 30m range, Auto/manual on/off control
Lens / Iris	2.8mm F1.4 Fixed Lens		
Field of View	Horizontal: 107°, Vertical: 56°	Horizontal: 97°, Vertical: 71°	Horizontal: 107°, Vertical: 56°
Focus	Fixed / 0.7m Min. Focus	Fixed / 0.9m Min. Focus	Fixed / 1.5m Min. Focus
DORI			
Detect (25px/m)	64m	64m	88m
Observe (63px/m)	25m	25m	35m
Recognise (125px/m)	13m	13m	18m
Identify (250px/m)	6m	6m	9m
Resolution	4.0MP (2688 x 1520) to CIF (352 x 288)	6.0MP (3072 x 2048) to CIF (352 x 288)	8.0MP (3840 x 2160) to CIF (352 x 288)
Frame Rate	Main	4.0MP (1 ~ 25fps)	8.0MP (1 ~ 25fps)
	Sub	D1 (1 ~ 25fps)	
	Third	1080p (1 ~ 25fps)	
Video Compression	H.265; H.264; H.264H; H.264B; MJPEG		
Bit Rate	H.265: 3 ~ 8192Kbps / H.264: 3 ~ 8192Kbps		
Bit Rate Control	Constant bit rate (CBR) / Variable bit rate (VBR)		
Day/Night	Auto (ICR) / Color / B&W		
Lighting Compensation	BLC / HLC / WDR (120dB) / AI SSA		
White Balance	Auto / Natural / Street Lamp / Outdoor / Manual / Regional Custom		
Gain Control	Auto		
Noise Reduction	3D DNR		
Picture Control	Mirror / Flip (0°, 90°, 180°, 270°) (Support 90°/270° at 4.0MP resolution and lower)		
Video Functions	Motion Detection (4 zones), Region of Interest (4 zones), Privacy Masking (4 zones), Smart Infrared		
AI Functions	Smart Motion Detection (SMD 4.0): People and vehicle detection using motion detection		
Intelligent Search	IVS (Perimeter Protection): People and vehicle detection using tripwire or intrusion rules		
Ethernet	RJ-45 (10/100Base-T)		
Protocol	IPv4; IPv6; HTTP; TCP; UDP; ARP; RTP; RTSP; RTCP; RTMP; SMTP; FTP; SFTP; DHCP; DNS; DDNS; QoS; UPnP; NTP; Multicast; ICMP; IGMP; NFS; SAMBA; PPPoE; SNMP		
Streaming Method	Multicast		
Max. User Access	20 Users		
Video Interface	N/A		
Audio Interface	1 input (RCA Port) / 1 output (RCA Port) / Built-in Mic / Audio Compression - G.711a; G.711Mu; G726		
Alarm Interface	1 channel in: 5mA 3-5VDC / 1 channel out: 300mA 12VDC		
Edge Storage	MicroSD Card (up to 256GB) / NAS / FTP / SFTP		
Interoperability	ONVIF / P2P / CGI / Milestone / Genetec		
Power Supply	12VDC / PoE (802.3af)		
Power Consumption	<7.2 W	<6.5 W	<7.9W
Operating Conditions	-40°C ~ +60°C, ≤95% RH		
Ingress Protection	IP67		
Housing	Metal		
Pan/Tilt/Rotation	Pan: 0° ~ 360°, Tilt: 0° ~ 90°, Rotation: 0° ~ 360°		
Dimensions	192.7mm x 70.5mm x 66.4mm		
Net Weight	0.59kg		

Application



Junction Box

VSBKTA130E

Pole Mount

VSBKTA130E +
VSBKTA152E

Your local VIP Vision™ IP solutions professional:



AI Scene Adaptive



AI People & Vehicle Detection
Gen. 2

8.0
MEGAPIXEL

6.0
MEGAPIXEL

4.0
MEGAPIXEL



Identify people & vehicles.

Professional AI Series: Motorised AI bullet cameras in 4.0MP, 6.0MP & 8.0MP

The Professional AI Series utilises the latest in AI machine learning technology to identify people & vehicles with superior accuracy and reliability. Experience improved AI performance with Smart Motion Detection (SMD 4.0) that minimises false triggers and detects humans & vehicles with a 99% accuracy rate. AI Smart Scene Adaptive (AI SSA) detects and adjusts for fog, glare, low light and rain to ensure capture of clear video evidence.

- Stream up to 8.0MP (2688 x 1520) at 25fps
- H.265 encoding for efficient storage & streaming
- Up to 60m infrared range; true day/night (auto ICR)
- Back/highlight compensation & true WDR (120dB)
- MicroSD slot for recording at the edge up to 256GB
- AI weather and anti-flicker scene self-adaption
- Smart Motion Detection (SMD 4.0) for person detection (up to 12m) and vehicle detection (up to 18m)
- 3D digital noise reduction & auto white balance
- IP67 weather rated & IK10 vandal rated housing



Record up to 4K in Real Time (25fps)



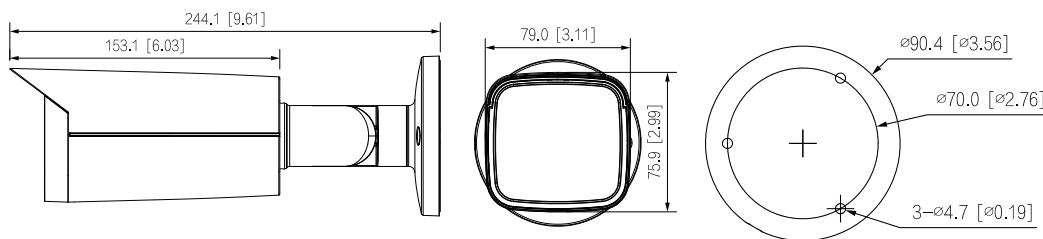
Smart Person & Vehicle Detection



AI Scene Adaptation

Specifications	4.0MP Motorised AI Bullet	6.0MP Motorised AI Bullet	8.0MP Motorised AI Bullet
Ordering Information	VSIPP-4BIRMG-I2	VSIPP-6BIRMG-I2	VSIPP-8BIRMG-I2
Image Sensor	1/3" 4.0MP Progressive Scan CMOS	1/2.7" 6.0MP Progressive Scan CMOS	1/2.8" 8.0MP Progressive Scan CMOS
Effective Pixels	2688 (H) x 1520 (V)	3072 (H) x 2048 (V)	3840 (H) x 2160 (V)
RAM / ROM	512MB / 128MB	1GB / 128MB	1GB / 128MB
Min Illumination	0.005 lux/F1.5 (Color)	0.005 lux/F1.5 (Color)	0.007 Lux/F1.5 (Color)
Infrared System	4 x Infrared LED, 60m range, Auto/manual on/off control		
S/N Ratio	> 56dB		
Lens / Iris	2.7 ~ 13.5mm F1.5 Motorised Varifocal Lens with Fixed Iris		
Field of View	Horizontal: 104°~29°, Vertical: 54°~16°	Horizontal: 99°~28°, Vertical: 71°~21°	Horizontal: 109°~30°, Vertical: 56°~17°
Focus	Auto Focus / 0.8m Min. Focus Distance		
Detect (25px/m)	64m (wide) / 210m (tele)	64m (wide) / 210m (tele)	88m (wide) / 290m (tele)
Observe (63px/m)	26m (wide) / 84m (tele)	26m (wide) / 84m (tele)	35m (wide) / 116m (tele)
Recognise (125px/m)	13m (wide) / 42m (tele)	13m (wide) / 42m (tele)	18m (wide) / 58m (tele)
Identify (250px/m)	6m (wide) / 21m (tele)	6m (wide) / 21m (tele)	9m (wide) / 29m (tele)
Resolution	4.0MP (2688 x 1520) to CIF (352 x 288)	6.0MP (3072 x 2048) to CIF (352 x 288)	8.0MP (3840 x 2160) to CIF (352 x 288)
Frame Rate	Main	4.0MP (1 ~ 25fps)	6.0MP (1 ~ 25fps)
	Sub		D1 (1 ~ 25fps)
	Third		1080p (1 ~ 25fps)
Video Compression	H.265; H.264; H.264H; H.264B; MJPEG		
Bit Rate	H.265: 3 ~ 8192Kbps / H.264: 3 ~ 8192Kbps		
Bit Rate Control	Constant bit rate (CBR) / Variable bit rate (VBR)		
Day/Night	Auto (ICR) / Color / B&W		
Lighting Compensation	BLC / HLC / WDR (120dB) / AI SSA		
White Balance	Auto / Natural / Street Lamp / Outdoor / Manual / Regional Custom		
Gain Control	Auto		
Noise Reduction	3D DNR		
Picture Control	Mirror / Flip (0°, 90°, 180°, 270°) (support 90°/270° with 4.0MP and lower)		
Video Functions	Motion Detection (4 zones), Region of Interest (4 zones), Privacy Masking (4 zones), Smart Infrared		
AI Functions	Smart Motion Detection (SMD 4.0): People and vehicle detection using motion detection Perimeter Protection: People and vehicle detection using tripwire or intrusion rules		
Intelligent Search	Search people or vehicle detection events (SMD 4.0, Perimeter Protection)		
Ethernet	RJ-45 (10/100Base-T)		
Protocol	IPv4; IPv6; HTTP; TCP; UDP; ARP; RTP; RTSP; RTCP; RTMP; SMTP; FTP; SFTP; DHCP; DNS; DDNS; QoS; UPnP; NTP; Multicast; ICMP; IGMP; NFS; SAMBA; PPPoE; SNMP		
Streaming Method	Multicast		
Max. User Access	20 Users		
Video Interface	N/A		
Audio Interface	1 input (RCA Port) / 1 output (RCA Port) / Built-in MIC / Audio Compression - G.711a; G.711Mu; PCM; G.726; G.723		
Alarm Interface	1 channel in: 5mA 3-5VDC / 1 channel out: 300mA 12VDC		
Edge Storage	FTP / SFTP / NAS / MicroSD Card (up to 256GB)		
Interoperability	ONVIF / P2P / CGI / Milestone / Genetec		
Power Supply	12VDC / PoE (802.3af)		
Power Consumption	<9.2W	<8.5W	<10.5W
Operating Conditions	-30°C ~ +60°C / ≤95% RH		
Vandal Resistance	IK10		
Ingress Protection	IP67		
Housing	Metal		
Pan/Tilt/Rotation	Pan: 0° ~ 360°, Tilt: 0° ~ 90°, Rotation: 0° ~ 360°		
Dimensions	244.1mm x 79.0mm x 75.9mm		
Net Weight	0.82kg		

Application



Junction Box	
VSBKTA130E	VSBKTA135
Pole Mount	
VSBKTA130E + VSBKTA152E	VSBKTA135 + VSBKTA152E

Your local VIP Vision™ IP solutions professional:

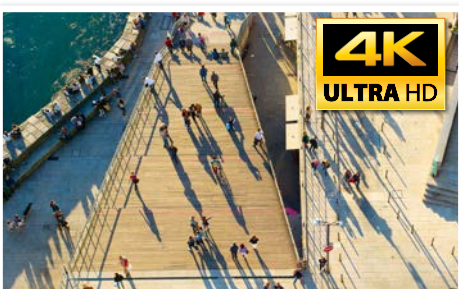


Identify people & vehicles.

Professional AI Series: Fixed AI vandal domes in 4.0MP, 6.0MP & 8.0MP

The Professional AI Series utilises the latest in AI machine learning technology to identify people & vehicles with superior accuracy and reliability. Experience improved AI performance with Smart Motion Detection (SMD 4.0) that minimises false triggers and detects humans & vehicles with a 99% accuracy rate. AI Smart Scene Adaptive (AI SSA) detects and adjusts for fog, glare, low light and rain to ensure capture of clear video evidence.

- Stream up to 8.0MP (3840 x 2160) at 25fps
- H.265 encoding for efficient storage & streaming
- Up to 50m infrared range; true day/night (auto ICR)
- Back/highlight compensation & true WDR (120dB)
- MicroSD slot for recording at the edge up to 256GB
- AI weather and anti-flicker scene self-adaption
- New gen Smart Motion Detection (SMD 4.0) & Perimeter Protection to prevent false alarms, using VIP Vision NVRs
- 3D digital noise reduction & auto white balance
- IP67 weather rated & IK10 vandal rated housing



Record up to 4K in Real Time (25fps)



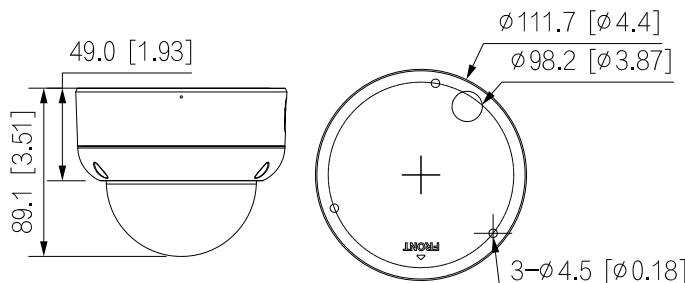
Smart Person & Vehicle Detection



AI Scene Adaptation

Specifications		4.0MP Fixed AI Vandal Dome	6.0MP Fixed AI Vandal Dome	8.0MP Fixed AI Vandal Dome	
Ordering Information		VSIPP-4DIRD-I2	VSIPP-6DIRD-I2	VSIPP-8DIRD-I2	
Camera	Image Sensor	1/3" 4.0MP Progressive Scan CMOS	1/2.7" 6.0MP Progressive Scan CMOS	1/2.8" 8.0MP Progressive Scan CMOS	
	Effective Pixels	2688 (H) x 1520 (V)	3072 (H) x 2048 (V)	3840 (H) x 2160 (V)	
	RAM / ROM	512MB / 128MB	1GB / 128MB	1GB / 128MB	
	Min Illumination	0.005 Lux/F1.4 (Color)	0.005 lux/F1.4 (Color)	0.007 Lux/F1.4 (Color)	
	Infrared System	3 x Infrared LED, 50m range, Auto/manual on/off control	3 x Infrared LED, 30m range, Auto/manual on/off control	3 x Infrared LED, 30m range, Auto/manual on/off control	
	S/N Ratio		> 56dB		
Lens	Lens / Iris		2.8mm F1.4 Fixed Lens		
	Field of View	Horizontal: 102°, Vertical: 54°	Horizontal: 111°, Vertical: 58°	Horizontal: 107°, Vertical: 56°	
	Focus	Fixed / 0.7m Min. Focus	Fixed / 1.1m Min. Focus	Fixed / 1.5m Min. Focus	
DORI	Detect (25px/m)	64m	64m	88m	
	Observe (63px/m)	25m	25m	35m	
	Recognise (125px/m)	13m	13m	18m	
	Identify (250px/m)	6m	6m	9m	
Video	Resolution	4.0MP (2688 x 1520) to CIF (352 x 288)	6.0MP (3072 x 2048) to CIF (352 x 288)	8.0MP (3840 x 2160) to CIF (352 x 288)	
	Frame Rate	Main	4.0MP (1 ~ 25fps)	6.0MP (1 ~ 25fps)	8.0MP (1 ~ 25fps)
		Sub		D1 (1 ~ 25fps)	
		Third		1080p (1 ~ 25fps)	
	Video Compression		H.265; H.264; H.264H; H.264B; MJPEG		
	Bit Rate		H.265: 3 ~ 8192Kbps / H.264: 3 ~ 8192Kbps		
	Bit Rate Control		Constant bit rate (CBR) / Variable bit rate (VBR)		
	Day/Night		Auto (ICR) / Color / B&W		
	Lighting Compensation		BLC / HLC / WDR (120dB) / AI SSA		
	White Balance		Auto / Natural / Street Lamp / Outdoor / Manual / Regional Custom		
Gain Control		Auto			
IVS	Noise Reduction		3D DNR		
	Picture Control		Mirror / Flip (0°, 90°, 180°, 270°) (Support 90°/270° at 4.0MP resolution and lower)		
	Video Functions		Motion Detection (4 zones), Region of Interest (4 zones), Privacy Masking (4 zones)		
	AI Functions		Smart Motion Detection (SMD 4.0): People and vehicle detection using motion detection IVS (Perimeter Protection): People and vehicle detection using tripwire or intrusion rules		
	Intelligent search		Search people or vehicle detection events (SMD 4.0, Perimeter Protection)		
Network	Ethernet		RJ-45 (10/100Base-T)		
	Protocol		IPv4; IPv6; HTTP; TCP; UDP; ARP; RTP; RTSP; RTCP; RTMP; SMTP; FTP; SFTP; DHCP; DNS; DDNS; QoS; UPnP; NTP; Multicast; ICMP; IGMP; NFS; SAMBA; PPPoE; SNMP		
	Streaming Method		Multicast		
	Max. User Access		20 Users		
Interface	Video Interface		N/A		
	Audio Interface		Built-in Mic / 1 input (RCA Port) / 1 output (RCA Port) / Audio Compression - G.711a; G.711Mu; PCM; G.726; G.723		
	Alarm Interface		1 channel in: 5mA 3-5VDC / 1 channel out: 300mA 12VDC		
	Edge Storage		MicroSD Card (up to 256GB) / NAS / FTP / SFTP		
	Interoperability		ONVIF / P2P / CGI / Milestone / Genetec		
Environmental	Power Supply		12VDC / PoE (802.3af)		
	Power Consumption	<8.3W	<9.7W	<9.7W	
	Operating Conditions		-40°C ~ +60°C, ≤95% RH		
	Ingress Protection		IP67		
	Vandal Resistance		IK10		
	Housing		Metal		
	Pan/Tilt/Rotation		Pan: 0° ~ 355°, Tilt: 0° ~ 80°, Rotation: 0° ~ 355°		
Dimensions		Ø111.7mm x 89.1mm			
Net Weight		0.516kg			

Application



	Junction Box	Ceiling Mount
VS BKTA136		VS BKTA109 + VS BKTB220C
Wall Mount		Pole Mount
VS BKTB203W		VS BKTB203W + VS BKTA152E

Your local VIP Vision™ IP solutions professional:



AI Scene Adaptive



AI People & Vehicle Detection
Gen. 2



Identify people & vehicles.

Professional AI Series: Motorised AI vandal domes in 4.0MP, 6MP & 8.0MP

The Professional AI Series utilises the latest in AI machine learning technology to identify people & vehicles with superior accuracy and reliability. Experience improved AI performance with Smart Motion Detection (SMD 4.0) that minimises false triggers and detects humans & vehicles with a 99% accuracy rate. AI Smart Scene Adaptive (AI SSA) detects and adjusts for fog, glare, low light and rain to ensure capture of clear video evidence.

- Stream up to 8.0MP (2688 x 1520) at 25fps
- H.265+ encoding for efficient storage & streaming
- Up to 40m infrared range; true day/night (auto ICR)
- Back/highlight compensation & true WDR (120dB)
- MicroSD slot for recording at the edge up to 256GB
- AI weather and anti-flicker scene self-adaption
- Smart Motion Detection (SMD 4.0) for person detection (up to 12m) and vehicle detection (up to 18m)
- 3D digital noise reduction & auto white balance
- IP67 weather rated & IK10 vandal rated housing



Record up to 4K in Real Time (25fps)



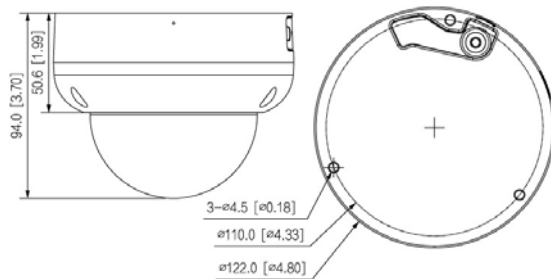
Smart Person & Vehicle Detection



AI Scene Adaptation

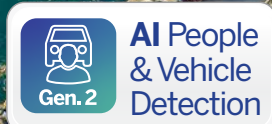
Specifications	4.0MP Motorised AI Vandal Dome	6.0MP Motorised AI Vandal Dome	8.0MP Motorised AI Vandal Dome
Ordering Information	VSIPP-4DIRMD-I2	VSIPP-6DIRMD-I2	VSIPP-8DIRMD-I2
Image Sensor	1/3" 4.0MP Progressive Scan CMOS	1/2.7" 6.0MP Progressive Scan CMOS	1/2.8" 8.0MP Progressive Scan CMOS
Effective Pixels	2688 (H) x 1520 (V)	3072 (H) x 2048 (V)	3840 (H) x 2160 (V)
RAM / ROM	512MB / 128MB	1GB / 128MB	1GB / 128MB
Min Illumination	0.005 Lux/F1.5 (Color)	0.005 lux/F1.5 (Color)	0.007 Lux/F1.5 (Color)
S/N Ratio	> 56dB		
Infrared System	3 x Infrared LED, 40m range, Auto/manual on/off control		
Lens / Iris	2.7 ~ 13.5mm F1.5 Motorised Varifocal Lens with Fixed Iris		
Field of View	Horizontal: 104°~29°, Vertical: 54°~16°	Horizontal: 109°~30°, Vertical: 56°~17°	Horizontal: 109°~30°, Vertical: 56°~17°
Focus	Auto Focus / 0.8m Min. Focus Distance		
DORI			
Detect (25px/m)	64m (wide) / 210m (tele)	64m (wide) / 210m (tele)	88m (wide) / 290m (tele)
Observe (63px/m)	26m (wide) / 84m (tele)	26m (wide) / 84m (tele)	35m (wide) / 116m (tele)
Recognise (125px/m)	13m (wide) / 42m (tele)	13m (wide) / 42m (tele)	18m (wide) / 58m (tele)
Identify (250px/m)	6m (wide) / 21m (tele)	6m (wide) / 21m (tele)	9m (wide) / 29m (tele)
Resolution	4.0MP (2688 x 1520) to CIF (352 x 288)	6.0MP (3072 x 2048) to CIF (352 x 288)	8.0MP (3840 x 2160) to CIF (352 x 288)
Frame Rate	Main	4.0MP (1 ~ 25fps)	6.0MP (1 ~ 25fps)
	Sub		D1 (1 ~ 25fps)
	Third		1080p (1 ~ 25fps)
Video Compression	H.265; H.264; H.264H; H.264B; MJPEG		
Bit Rate	H.265: 3~ 8192Kbps / H.264: 3 ~ 8192Kbps		
Bit Rate Control	Constant bit rate (CBR) / Variable bit rate (VBR)		
Day/Night	Auto (ICR) / Color / B&W		
Lighting Compensation	BLC / HLC / WDR (120dB) / AI SSA		
White Balance	Auto / Natural / Street Lamp / Outdoor / Manual / Regional Custom		
Gain Control	Auto		
Noise Reduction	3D DNR		
Picture Control	Mirror / Flip (0°, 90°, 180°, 270°) (support 90°/270° with 4.0MP resolution and lower)		
Mic	Includes Built-In Mic		
Video Functions	Motion Detection (4 zones), Region of Interest (4 zones), Privacy Masking (4 zones), Smart Infrared		
AI Functions	Smart Motion Detection (SMD 4.0): People and vehicle detection using motion detection Perimeter Protection: People and vehicle detection using tripwire or intrusion rules		
Intelligent search	Search people or vehicle detection events (SMD 4.0, Perimeter Protection)		
Network			
Ethernet	RJ-45 (10/100Base-T)		
Protocol	IPv4; IPv6; HTTP; TCP; UDP; ARP; RTP; RTSP; RTCP; RTMP; SMTP; FTP; SFTP; DHCP; DNS; DDNS; QoS; UPnP; NTP; Multicast; ICMP; IGMP; NFS; SAMBA; PPPoE; SNMP		
Streaming Method	Multicast		
Max. User Access	20 Users		
Interface			
Video Interface	N/A		
Audio Interface	1 input (RCA Port) / 1 output (RCA Port) / Audio Compression - G.711a; G.711Mu; PCM; G.726; G.723		
Alarm Interface	1 channel in: 3-5mA 5VDC / 1 channel out: 300mA 12VDC		
Edge Storage	MicroSD Card (up to 256GB) / NAS / FTP / SFTP		
Interoperability	ONVIF / P2P / CGI / Milestone / Genetec		
Power Supply	12VDC / PoE (802.3af)		
Power Consumption	<9.2W	<10.5w	<10.5W
Operating Conditions	-30°C ~ +60°C, ≤95% RH		
Ingress Protection	IP67		
Vandal Resistance	IK10		
Housing	Metal		
Pan/Tilt/Rotation	Pan: 0° ~ 355°, Tilt: 0° ~ 80°, Rotation: 0° ~ 355°		
Dimensions	Ø122mm x 94mm		

Application



Junction Box	Wall Mount	Ceiling Mount
VSBKTA137 or VSBKTA123	VSBKTB206W or VSBKTA109 + VSBKTB305W	VSBKTA109 + VSBKTB220C
Corner Mount		Pole Mount
VSBKTA109 + VSBKTB305W + VSBKTA151		VSBKTA109 + VSBKTB305W + VSBKTA150

Your local VIP Vision™ IP solutions professional:



AI people & vehicle detection.

Professional AI Series: Fixed lens AI turret dome cameras in 4.0MP, 6.0MP and 8.0MP

The Professional AI Series utilises the latest in AI machine learning technology to identify people & vehicles with superior accuracy and reliability. Experience improved AI performance with Smart Motion Detection (SMD 4.0) that minimises false triggers and detects humans & vehicles with a 99% accuracy rate. AI Smart Scene Adaptive (AI SSA) detects and adjusts for fog, glare, low light and rain to ensure capture of clear video evidence.

- Stream up to 8.0MP (3840 x 2160) at 25fps
- H.265 encoding for efficient storage & streaming
- Up to 50m infrared range; true day/night (auto ICR)
- Back/highlight compensation & true WDR (120dB)
- MicroSD slot for recording at the edge up to 256GB
- AI weather and anti-flicker scene self-adaption
- Smart Motion Detection (SMD 4.0) for person detection (up to 12m) and vehicle detection (up to 18m)
- 3D digital noise reduction & auto white balance
- IP67 weather rated housing for outdoor use



Record up to 4K in Real Time



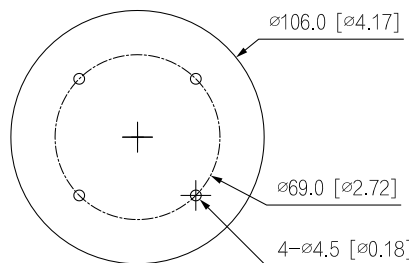
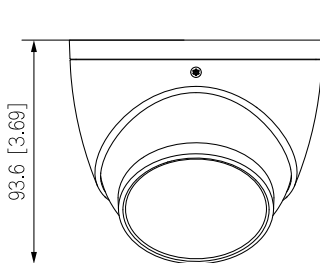
AI Human & Vehicle Detection



AI Adapts Scene for Best Picture

Specifications	4.0MP Fixed AI Turret Dome	6.0MP Fixed AI Turret Dome	8.0MP Fixed AI Turret Dome
Ordering Information	VSIPP-4DIRG-I2	VSIPP-6DIRG-I2 VSIPP-6DIRG-I2-B	VSIPP-8DIRG-I2 VSIPP-8DIRG-I2-B
Image Sensor	1/3" 4.0MP Progressive Scan CMOS	1/2.7" 6.0MP Progressive Scan CMOS	1/2.8" 8.0MP Progressive Scan CMOS
Effective Pixels	2688 (H) x 1520 (V)	3072 (H) x 2048 (V)	3840 (H) x 2160 (V)
RAM / ROM	512MB / 128MB	1 GB / 128MB	1 GB / 128MB
Min Illumination	0.005 Lux/F1.4 (Colour)	0.005 Lux/F1.4 (Colour)	0.007 Lux/F1.4 (Color)
S/N Ratio	>56dB		
Infrared System	2 x Infrared LED, 50m range, Auto/manual on/off control	2 x Infrared LED, 30m range, Auto/manual on/off control	2 x Infrared LED, 30m range, Auto/manual on/off control
Lens / Iris	2.8mm F1.4 Fixed Lens		
Field of View	Horizontal: 102°, Vertical: 54°, Diagonal: 121°	Horizontal: 97°, Vertical: 71°, Diagonal: 129°	Horizontal: 107°, Vertical: 56°, Diagonal: 127°
Focus	Auto Focus / 0.9m Min. Focus Distance	Auto Focus / 1.1m Min. Focus Distance	Fixed / 1.5m Min. Focus Distance
DORI			
Detect (25px/m)	64 m	64 m	88 m
Observe (63px/m)	25 m	25 m	35 m
Recognise (125px/m)	13 m	13 m	18 m
Identify (250px/m)	6 m	6 m	9 m
Resolution	4.0MP (2688 x 1520) to CIF (352 x 288)	6.0MP (3072 x 1728) to CIF (352 x 288)	8.0MP (3840 x 2160) to CIF (352 x 288)
Frame Rate	Main	4.0MP (1 ~ 25fps)	8.0MP (1 ~ 25fps)
	Sub	D1 (1 ~ 25fps)	
	Third	1080p (1 ~ 25fps)	
Video Compression	H.265 / H.264H / H.264 / H.264B / MJPEG		
Bit Rate	H.265: 3 ~ 8192Kbps / H.264: 3 ~ 8192Kbps		
Bit Rate Control	Constant bit rate (CBR) / Variable bit rate (VBR)		
Day/Night	Auto (ICR) / Color / B&W		
Lighting Compensation	BLC / HLC / WDR (120dB)		
Smart Scene Adaptive	SSA		
White Balance	Auto / Natural / Street Lamp / Outdoor / Manual / Regional Custom		
Gain Control	Auto		
Noise Reduction	3D DNR		
Picture Control	Mirror / Flip (0°, 90°, 180°, 270°) (Support 90°/270° with 4.0MP resolution and lower)		
Video Functions	Motion Detection (4 zones), Region of Interest (4 zones), Privacy Masking (4 zones), Smart Infrared		
AI Functions	Smart Motion Detection (SMD 4.0): People and vehicle detection using motion detection		
Intelligent search	Perimeter Protection: People and vehicle detection using tripwire or intrusion rules Search people or vehicle detection events (SMD 4.0, Perimeter Protection)		
Network	RJ-45 (10/100 Base-T)		
Protocol	IPv4; IPv6; HTTP; TCP; UDP; ARP; RTP; RTSP; RTCP; RTMP; SMTP; FTP; SFTP; DHCP; DNS; DDNS; QoS; UPnP; NTP; Multicast; ICMP; IGMP; NFS; SAMBA; PPPoE; SNMP		
Streaming Method	Multicast		
Max. User Access	20 Users		
Audio Interface	Built-in Mic / Audio Compression - G.711a; G.711Mu; G726; PCM; G.723		
Alarm Interface	N/A		
RS485	N/A		
Edge Storage	MicroSD Card (up to 256GB) / NAS / FTP / SFTP		
Interoperability	ONVIF / P2P / CGI / Milestone / Genetec		
Power Supply	12VDC / PoE (802.3af)		
Power Consumption	<7.9W	<8.9W	<8.9W
Operating Conditions	-40°C ~ +60°C / ≤95% RH		
Ingress Protection	IP67		
Housing	Metal		
Pan/Tilt/Rotation	Pan: 0° ~ 360°, Tilt: 0° ~ 78°, Rotation: 0° ~ 360°		
Dimensions	Ø106mm x 93.6mm		
Net Weight	0.50kg		

Application



Application		Junction Box	Wall Mount	
	VSBKTA139		VSBKTB204W	VSBKTA106 + VSBKTB305W
		Pole Mount		Ceiling Mount
	VSBKTA139 + VSBKTA152E		VSBKTB204W + VSBKTA152E	VSBKTA106 + VSBKTB220C

Your local VIP Vision™ IP solutions professional:



Identify people & vehicles.

Professional AI Series: Motorised AI turret dome in 4.0MP 6.0MP & 8.0MP

The Professional AI Series utilises the latest in AI machine learning technology to identify people & vehicles with superior accuracy and reliability. Experience improved AI performance with Smart Motion Detection (SMD 4.0) that minimises false triggers and detects humans & vehicles with a 99% accuracy rate. AI Smart Scene Adaptive (AI SSA) detects and adjusts for fog, glare, low light and rain to ensure capture of clear video evidence.

- Stream up to 8.0MP (3840 x 2160) at 25fps
- H.265 encoding for efficient storage & streaming
- Up to 40m infrared range; true day/night (auto ICR)
- Back/highlight compensation & true WDR (120dB)
- MicroSD slot for recording at the edge up to 256GB
- AI weather and anti-flicker scene self-adaption
- Smart Motion Detection (SMD 4.0) for person detection (up to 12m) and vehicle detection (up to 18m)
- 3D digital noise reduction & auto white balance
- IP67 weather rated housing for outdoor use



Record up to 4K in Real Time (25fps)



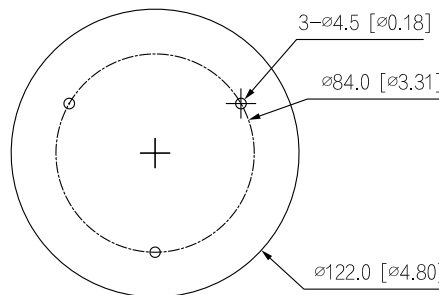
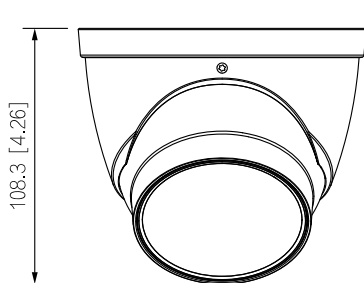
Smart Person & Vehicle Detection



AI Scene Adaptation

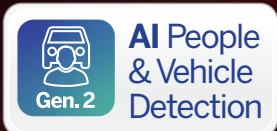
Specifications	4.0MP Motorised AI Turret Dome	6.0MP Motorised AI Turret Dome	8.0MP Motorised AI Turret Dome
Ordering Information	VSIPP-4DIRMG-I2	VSIPP-6DIRMG-I2	VSIPP-8DIRMG-I2
Image Sensor	1/3" 4.0MP Progressive Scan CMOS	1/2.7" 6.0MP Progressive Scan CMOS	1/2.8" 8.0MP Progressive Scan CMOS
Effective Pixels	2688 (H) x 1520 (V)	3072 (H) x 2048 (V)	3840 (H) x 2160 (V)
RAM / ROM	512MB / 128MB	1GB / 128MB	1GB / 128MB
Min Illumination	0.005 Lux/F1.5 (Color)	0.005 lux/F1.5 (Color)	0.007 Lux/F1.5 (Color)
S/N Ratio	> 56dB		
Infrared System	2 x Infrared LED, 40m range, Auto/manual on/off control		
Lens / Iris	2.7 ~ 13.5mm F1.5 Motorised Varifocal Lens with Fixed Iris		
Field of View	Horizontal: 104°~29°, Vertical: 54°~16°	Horizontal: 99°~28°, Vertical: 71°~21°	Horizontal: 109°~30°, Vertical: 56°~17°
Focus	Auto Focus / 0.8m Min. Focus Distance		
DORI			
Detect (25px/m)	64m (wide) / 210m (tele)	64m (wide) / 210m (tele)	88m (wide) / 290m (tele)
Observe (63px/m)	26m (wide) / 84m (tele)	26m (wide) / 84m (tele)	35m (wide) / 116m (tele)
Recognise (125px/m)	13m (wide) / 42m (tele)	13m (wide) / 42m (tele)	18m (wide) / 58m (tele)
Identify (250px/m)	6m (wide) / 21m (tele)	6m (wide) / 21m (tele)	9m (wide) / 29m (tele)
Resolution	4.0MP (2688 x 1520) to CIF (352 x 288)	6.0MP (3072 x 2048) to CIF (352 x 288)	8.0MP (3840 x 2160) to CIF (352 x 288)
Frame Rate	Main	4.0MP (1 ~ 25fps)	8.0MP (1 ~ 25fps)
	Sub	D1 (1 ~ 25fps)	
	Third	1080p (1 ~ 25fps)	
Video Compression	H.265; H.264; H.264H; H.264B; MJPEG		
Bit Rate	H.265: 3 ~ 8192Kbps / H.264: 3 ~ 8192Kbps		
Bit Rate Control	Constant bit rate (CBR) / Variable bit rate (VBR)		
Day/Night	Auto (ICR) / Color / B&W		
Lighting Compensation	BLC / HLC / WDR (120dB) / SSA		
White Balance	Auto / Natural / Street Lamp / Outdoor / Manual / Regional Custom		
Gain Control	Auto		
Noise Reduction	3D DNR		
Picture Control	Mirror / Flip (0°, 90°, 180°, 270°) (support 90°/270° with 4.0MP resolution and lower)		
Video Functions	Motion Detection (4 zones), Region of Interest (4 zones), Privacy Masking (4 zones), Smart Infrared		
AI Functions	Smart Motion Detection (SMD 4.0): People and vehicle detection using motion detection Perimeter Protection: People and vehicle detection using tripwire or intrusion rules		
Intelligent search	Search people or vehicle detection events (SMD 4.0, Perimeter Protection)		
Network			
Ethernet	RJ-45 (10/100Base-T)		
Protocol	IPv4; IPv6; HTTP; TCP; UDP; ARP; RTP; RTSP; RTCP; RTMP; SMTP; FTP; SFTP; DHCP; DNS; DDNS; QoS; UPnP; NTP; Multicast; ICMP; IGMP; NFS; SAMBA; PPPoE; SNMP		
Streaming Method	Multicast		
Max. User Access	20 Users		
Interface			
Video Interface	N/A		
Audio Interface	Built-in Mic / Audio Compression - G.711a; G.711Mu; PCM; G.726; G.723		
Alarm Interface	N/A		
Edge Storage	MicroSD Card (up to 256GB) / NAS / FTP / SFTP		
Interoperability	ONVIF / P2P / CGI / Milestone / Genetec		
Power Supply	12VDC / PoE (802.3af)		
Power Consumption	<7.1 W	<8.9w	<8.9w
Operating Conditions	-30°C ~ +60°C / ≤95% RH		
Ingress Protection	IP67		
Housing	Metal		
Pan/Tilt/Rotation	Pan: 0° ~ 360°, Tilt: 0° ~ 78°, Rotation: 0° ~ 360°		
Dimensions	Ø122mm x 108.3mm		
Net Weight	0.715kg		

Application



	Junction Box	Wall Mount	Ceiling Mount
	VSBKTA137	VSBKTB205WE	VSBKTA109 + VSBKTB220C
	Pole Mount		
	VSBKTA137 + VSBKTA152E	VSBKTB205W-E + VSBKTA152E	

Your local VIP Vision™ IP solutions professional:



AI detects & deters intruders.

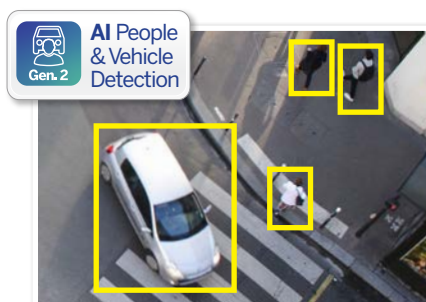
Professional AI Series: Fixed lens AI active deterrence turrets in 6.0MP and 8.0MP

The Professional AI Series utilises the latest in AI machine learning technology to identify people & vehicles with superior accuracy and reliability. The active deterrence range incorporates AI detection and a variety of in-camera features to deter intruders. Upon a human or vehicle detection event, these cameras can trigger a white LED spotlight for security lighting, a flashing blue/red LED strobe and a loud siren with programmable message/tone, to deter intruders. They are ideal for active security across a variety of residential and commercial applications.

- Stream up to 8.0MP (3840 x 2160) at 25fps
- Activates spotlight, flashing light & siren, switching from IR to colour footage in response to alarm events
- 24/7 Colour low light footage as low as 0.003lx
- Up to 30m infrared, BLC/HLC & true WDR (120dB)
- Intelligent AI detection to identify people & vehicles
- Next-Gen Smart Motion Detection (SMD 4.0) & Perimeter Protection to prevent false alarms, using VIP Vision NVRs
- AI SSA detects/adjusts exposure to ensure clear video.
- IP67 weather rated housing for outdoor use



Spotlight, Siren & Blue/Red Strobe



AI Human & Vehicle Detection



AI Adapts Scene for Best Picture

Specifications	6.0MP Fixed AI Deterrence Turret	8.0MP Fixed AI Deterrence Turret								
Ordering Information	VSIPP-6DG-ID3	VSIPP-8DG-ID3 VSIPP-8DG-ID3-B								
Image Sensor	1/2.7" 6.0MP Progressive Scan CMOS	1/2.8" 8.0MP Progressive Scan CMOS								
Effective Pixels	3200 (H) x 1800 (V)	3840 (H) x 2160 (V)								
RAM / ROM	512MB / 128MB									
Min Illumination	0.003 Lux/F1.0 (Color), 0.0003 lux/F1.0 (B/W, 30 IRE), 0 lux (IR)	0.004 Lux/F1.0 (Color), 0.0004 lux/F1.0 (B/W, 30 IRE), 0 lux (IR)								
Electronic Shutter	1/3 ~ 1/100,000s									
S/N Ratio	> 56dB									
Infrared System	1 x Infrared LED, 30m range, Auto/manual on/off control									
LED Illumination	1 x Spotlight (Warm White), 1 x Red & Blue Alarm Light									
Lens / Iris	2.8mm F1.0 Fixed Lens	2.8mm F1.0 Fixed Lens								
Field of View	Horizontal: 97°, Vertical: 70°, Diagonal: 128°	Horizontal: 106°, Vertical: 55°, Diagonal: 125°								
Focus	Auto Focus / 1.5m Min. Focus Distance	Auto Focus / 2m Min. Focus Distance								
DORI										
Detect (25px/m)	66m	91m								
Observe (63px/m)	26m	36m								
Recognise (125px/m)	13m	18m								
Identify (250px/m)	7m	9m								
Resolution	6.0MP (3200 x 1800) to CIF (352 x 288)	8.0MP (3840 x 2160) to CIF (352 x 288)								
Frame Rate	Main: 6.0MP (1 ~ 25fps)	8.0MP (1 ~ 25fps)								
	Sub: 704 x 576 (1 ~ 25fps)									
	Third: 1080p (1 ~ 25fps)									
Video Compression	H.265+ / H.265 / H.264+ / H.264 / H.264B / MJPEG									
Bit Rate	H.265: 32 ~ 20480Kbps / H.264: 12 ~ 20480Kbps									
Bit Rate Control	Constant bit rate (CBR) / Variable bit rate (VBR)									
Day/Night	Auto (ICR) / Colour / B&W									
Lighting Compensation	BLC / HLC / WDR (120dB)									
Smart Scene Adaptive	SSA									
White Balance	Auto / Natural / Street Lamp / Outdoor / Manual									
Gain Control	Auto / Manual									
Noise Reduction	3D DNR									
Picture Control	Mirror / Flip (0°, 90°, 180°, 270°)									
Video Functions	Motion Detection (4 zones), Region of Interest (4 zones), Privacy Masking (4 zones), Smart Illumination, Defog, Object Abandoned / Missing, Heat Map									
AI Functions	Event Triggers: Motion Detection, Perimeter Protection, Video Tampering, Scene Changing, Network Disconnection, IP Address Conflict, Illegal Access, Storage Anomaly									
Intelligent search	Perimeter Protection: People and vehicle detection using tripwire or intrusion rules Loitering detection: People gathering and parking detection									
Search	Search people or vehicle detection events (Perimeter Protection)									
Network	RJ-45 (10/100Base-T)									
Protocol	IPv4; IPv6; HTTP; TCP; UDP; ARP; RTP; RTSP; RTCP; RTMP; SMTP; FTP; SFTP; DHCP; DNS; DDNS; QoS; UPnP; NTP; Multicast; ICMP; IGMP; NFS; SAMBA; PPPoE; SNMP									
Streaming Method	Unicast / Multicast									
Max. User Access	20 Users (Total bandwidth: 72MB)									
Video Interface	N/A									
Audio Interface	Built-in Mic & Built-in Speaker, 1 Audio In/Output (RCA) / Audio Compression - PCM; G.711a; G.711Mu; G.726; G.723									
Alarm Interface	1 channel in: 5mA 3-5VDC / 1 channel out: 300mA 12VDC									
RS485	N/A									
Edge Storage	MicroSD Card (up to 256GB) / NAS / FTP / SFTP									
Interoperability	ONVIF (Profile S, Profile G, Profile T) / P2P / CGI / Milestone									
Power Supply	12VDC / PoE (802.3af)									
Power Consumption	<8.8W	<10.2W								
Operating Conditions	-40°C ~ +60°C / ≤95% RH									
Ingress Protection	IP67									
Vandal Resistance	N/A									
Housing	Metal									
Pan/Tilt/Rotation	Pan: 0° ~ 360°, Tilt: 0° ~ 78°, Rotation: 0° ~ 360°									
Dimensions	Ø122mm x 111mm									
Net Weight	0.75kg									
Accessories		<table border="1"> <tr> <td>Junction Box</td> <td>Ceiling Mount</td> </tr> <tr> <td>VSBKTA137 or VSBKTA130E</td> <td>VSBKTA109 + VSBKTB220C</td> </tr> <tr> <td>Wall Mount</td> <td>Pole Mount</td> </tr> <tr> <td>VSBKTB205WE or VSBKTB203W</td> <td>VSBKTB205W + VSBKTA152E</td> </tr> </table>	Junction Box	Ceiling Mount	VSBKTA137 or VSBKTA130E	VSBKTA109 + VSBKTB220C	Wall Mount	Pole Mount	VSBKTB205WE or VSBKTB203W	VSBKTB205W + VSBKTA152E
Junction Box	Ceiling Mount									
VSBKTA137 or VSBKTA130E	VSBKTA109 + VSBKTB220C									
Wall Mount	Pole Mount									
VSBKTB205WE or VSBKTB203W	VSBKTB205W + VSBKTA152E									

Your local VIP Vision™ IP solutions professional:



180° Intruder deterrence.

Professional AI Series: 180° Fixed lens AI active deterrence turrets in 8.0MP

The Professional AI Series utilises the latest in AI machine learning technology to identify people & vehicles with superior accuracy and reliability. The active deterrence range incorporates AI detection and a variety of in-camera features to deter intruders. Upon a human or vehicle detection event, these cameras can trigger a white LED spotlight for security lighting, a flashing blue/red LED strobe and a loud siren with programmable message/tone, to deter intruders. They are ideal for active security across a variety of residential and commercial applications.

- Stream up to 8.0MP (4096 x 1860) at 20fps
- Activates spotlight, flashing light & siren, switching from IR to colour footage in response to alarm events
- 24/7 Colour low light footage as low as 0.005lx
- Up to 25m infrared, BLC/HLC & true WDR (120dB)
- Intelligent AI detection to identify people & vehicles
- Next-Gen Smart Motion Detection (SMD 4.0) & Perimeter Protection to prevent false alarms, using VIP Vision NVRs
- Dual cameras in one housing for a 180° field of view
- IP67 weather rated housing for outdoor use



180° Coverage Surveillance



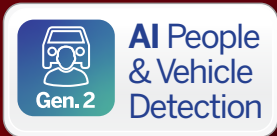
Spotlight, Siren & Blue/Red Strobe



AI Human & Vehicle Detection

Specifications		8.0MP Fixed 180° AI Deterrence Turret	
Ordering Information		VSIPP-8DD-ID3	
Camera	Image Sensor	Dual 1/2.7" 4.0MP Progressive Scan CMOS	
	Effective Pixels	4096 (H) x 1860 (V)	
	RAM / ROM	1GB / 128MB	
	Min Illumination	0.005 Lux/F1.4 (Color), 0.0005 lux/F1.4 (B/W, 30 IRE), 0 lux (IR)	
	Electronic Shutter	1/3 ~ 1/100,000s	
	S/N Ratio	> 56dB	
	Infrared System	2 x Infrared LED, 25m range, Auto/manual on/off control	
	LED Illumination	2 x Spotlight (Warm White), 20m range, 1 x Red & Blue Alarm Light	
	Lens	Lens / Iris	2.8mm F1.4 Fixed Lens
Field of View		Horizontal: 180°, Vertical: 86°	
Focus		Auto Focus / 0.8m Min. Focus Distance	
DORI	Detect (25px/m)	50m	
	Observe (63px/m)	20m	
	Recognise (125px/m)	10m	
	Identify (250px/m)	5m	
Video	Resolution	8.0MP (4096 x 1860) to 960 x 432	
	Frame Rate	Main	8.0MP (1 ~ 20fps)
		Sub	1200 x 530 (1 ~ 20fps)
		Third	1920 x 860 (1 ~ 20fps)
	Video Compression	H.265+ / H.265 / H.264+ / H.264 / H.264B / MJPEG	
	Bit Rate	H.265: 6 ~ 16384Kbps / H.264: 6 ~ 16384Kbps	
	Bit Rate Control	Constant bit rate (CBR) / Variable bit rate (VBR)	
	Day/Night	Auto (ICR) / Colour / B&W	
	Lighting Compensation	BLC / HLC / WDR (120dB)	
	Smart Scene Adaptive	Yes	
	White Balance	Auto / Natural / Street Lamp / Outdoor / Manual / Regional Custom	
	Gain Control	Auto	
Noise Reduction	3D DNR		
IVS	Video Functions	Motion Detection (4 zones), Region of Interest (4 zones), Privacy Masking (4 zones), Defog Event Triggers: Motion Detection, Perimeter Protection, Video Tampering, Scene Changing, Network Disconnection, IP Address Conflict, Illegal Access, Storage Anomaly	
	AI Functions	Perimeter Protection: People and vehicle detection using tripwire or intrusion rules	
	Intelligent search	Search people or vehicle detection events (Perimeter Protection)	
Network	Ethernet	RJ-45 (10/100Base-T)	
	Protocol	IPv4; IPv6; HTTP; TCP; UDP; ARP; RTP; RTSP; RTCP; RTMP; SMTP; FTP; SFTP; DHCP; DNS; DDNS; QoS; UPnP; NTP; Multicast; ICMP; IGMP; NFS; SAMBA; PPPoE; SNMP; P2P	
	Streaming Method	Multicast	
	Max. User Access	20 Users (Total bandwidth: 64MB)	
Interface	Video Interface	N/A	
	Audio Interface	Built-in Mic & Built-in Speaker, 1 Audio In/Output (RCA) / Audio Compression - PCM; G.711a; G.711Mu; G.726; G.723	
	Alarm Interface	1 channel in: 5mA 3-5VDC / 1 channel out: 300mA 12VDC	
	RS485	N/A	
	Edge Storage	MicroSD Card (up to 256GB) / NAS / FTP / SFTP	
Environmental	Interoperability	ONVIF (Profile S, Profile G, Profile T) / CGI	
	Power Supply	12VDC / PoE (802.3af)	
	Power Consumption	Deterrence: <8.7W (12VDC), <10.85W (PoE)	
	Operating Conditions	-40°C ~ +60°C / ≤95% RH	
	Ingress Protection	IP67	
	Vandal Resistance	N/A	
	Housing	Metal	
	Pan/Tilt/Rotation	Pan: 0° ~ 360°, Tilt: 0° ~ 78°, Rotation: 0° ~ 360°	
	Dimensions	Ø 122mm x 135mm	
	Net Weight	0.99kg	
Accessories		Junction Box	Ceiling Mount
		VSBKTA137	VSBKTA109 + VSBKTB220C
		Wall Mount	Pole Mount
		VSBKTB205W-E	VSBKTB205W-E + VSBKTA152E

Your local VIP Vision™ IP solutions professional:



180° Intruder deterrence.

Professional AI Series: 180° Fixed lens AI active deterrence bullet in 8.0MP

The Professional AI Series utilises the latest in AI machine learning technology to identify people & vehicles with superior accuracy and reliability. The active deterrence range incorporates AI detection and a variety of in-camera features to deter intruders. Upon a human or vehicle detection event, these cameras can trigger a white LED spotlight for security lighting, a flashing blue/red LED strobe and a loud siren with programmable message/tone, to deter intruders. They are ideal for active security across a variety of residential and commercial applications.

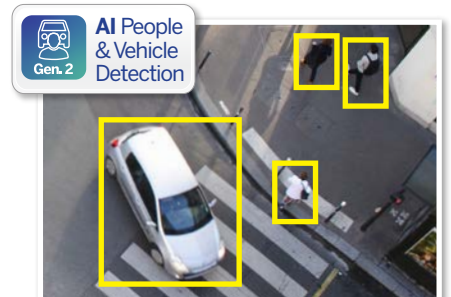
- Stream up to 8.0MP (4096 x 1860) at 20fps
- Activates spotlight, flashing light & siren, switching from IR to colour footage in response to alarm events
- 24/7 Colour low light footage as low as 0.005lx
- Up to 25m infrared, BLC/HLC & true WDR (120dB)
- Intelligent AI detection to identify people & vehicles
- Next-Gen Smart Motion Detection (SMD 4.0) & Perimeter Protection to prevent false alarms, using VIP Vision NVRs
- Dual cameras in one housing for a 180° field of view
- IP67 weather rated housing for outdoor use



180° Coverage Surveillance



Spotlight, Siren & Blue/Red Strobe



AI Human & Vehicle Detection

Specifications		8.0MP Fixed 180° AI Deterrence Bullet		
Ordering Information		VSIPP-8BD-ID3		
Camera	Image Sensor	Dual 1/2.7" 8.0MP Progressive Scan CMOS		
	Effective Pixels	4096 (H) x 1860 (V)		
	RAM / ROM	1GB / 128MB		
	Min Illumination	0.005 Lux/F1.4 (Color), 0.0005 lux/F1.4 (B/W, 30 IRE), 0 lux (IR)		
	Electronic Shutter	1/3 ~ 1/100,000s		
	S/N Ratio	> 56dB		
	Infrared System	2 x Infrared LED, 25m range, Auto/manual on/off control		
	LED Illumination	2 x Spotlight (Warm White), 1 x Red & Blue Alarm Light		
	Lens	Lens / Iris	2.8mm F1.4 Fixed Lens	
		Field of View	Horizontal: 180°, Vertical: 86°	
Focus		Auto Focus / 0.8m Min. Focus Distance		
DORI	Detect (25px/m)	51m		
	Observe (63px/m)	20m		
	Recognise (125px/m)	10m		
	Identify (250px/m)	5m		
Video	Resolution	8.0MP (4096 x 1860) to (960 x 432)		
	Frame Rate	Main	8.0MP (1 ~ 20fps)	
		Sub	1200 x 530 (1 ~ 20fps)	
		Third	1920 x 860 (1 ~ 20fps)	
	Video Compression	H.265+ / H.265 / H.264+ / H.264 / H.264B / MJPEG		
	Bit Rate	H.265: 6 ~ 16384Kbps / H.264: 6 ~ 16384Kbps		
	Bit Rate Control	Constant bit rate (CBR) / Variable bit rate (VBR)		
	Day/Night	Auto (ICR) / Color / B&W		
	Lighting Compensation	BLC / HLC / WDR (120dB)		
	Smart Scene Adaptive	Yes		
	White Balance	Auto / Natural / Street Lamp / Outdoor / Manual		
	Gain Control	Auto		
Noise Reduction	3D DNR			
IVS	Video Functions	Motion Detection (4 zones), Region of Interest (4 zones), Privacy Masking (4 zones), Smart Illumination, Defog Event Triggers: Motion Detection, Perimeter Protection, Video Tampering, Scene Changing, Network Disconnection, IP Address Conflict, Illegal Access, Storage Anomaly		
	AI Functions	Perimeter Protection: People and vehicle detection using tripwire or intrusion rules		
	Intelligent search	Search people or vehicle detection events (Perimeter Protection)		
Network	Ethernet	RJ-45 (10/100Base-T)		
	Protocol	IPv4; IPv6; HTTP; TCP; UDP; ARP; RTP; RTSP; RTCP; RTMP; SMTP; FTP; SFTP; DHCP; DNS; DDNS; QoS; UPnP; NTP; Multicast; ICMP; IGMP; NFS; SAMBA; PPPoE; SNMP; P2P		
	Streaming Method	Multicast		
	Max. User Access	20 Users (Total bandwidth: 64MB)		
Interface	Video Interface	N/A		
	Audio Interface	Built-in Mic & Built-in Speaker, 1 Audio In/Output (RCA) / Audio Compression - PCM; G.711a; G.711Mu; G.726; G.723		
	Alarm Interface	1 channel in: 5mA 3-5VDC / 1 channel out: 300mA 12VDC		
	RS485	N/A		
	Edge Storage	MicroSD Card (up to 256GB) / NAS / FTP / SFTP		
Interoperability	ONVIF (Profile S, Profile G, Profile T) / CGI			
Environmental	Power Supply	Deterrence: <9W (12VDC), <10.35W (PoE)		
	Power Consumption	<9W, <10.3W (PoE)		
	Operating Conditions	-40°C ~ +60°C / ≤95% RH		
	Ingress Protection	IP67		
	Vandal Resistance	N/A		
	Housing	Metal		
	Pan/Tilt/Rotation	Pan: 0° ~ 360°, Tilt: 0° ~ 78°, Rotation: 0° ~ 360°		
Dimensions	Ø183mm x 99mm x 78mm			
Net Weight	0.69kg			
Accessories			Junction Box	
			VSBKTA130E	

Your local VIP Vision™ IP solutions professional:



AI Scene Adaptive



AI People & Vehicle Detection

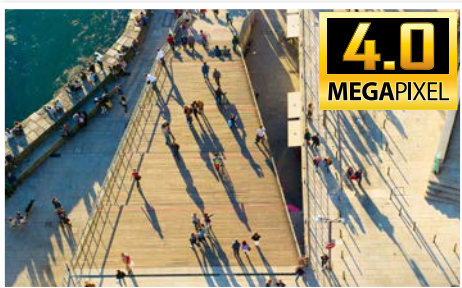
4.0 MEGAPIXEL

Identify people & vehicles.

Professional AI Series: Fixed AI perimeter protection wedge domes in 4.0MP

The Professional AI Series utilises the latest in AI machine learning technology to identify people & vehicles with superior accuracy and reliability. Experience improved AI performance with Smart Motion Detection (SMD 4.0) that minimises false triggers and detects humans & vehicles with a 99% accuracy rate. AI Smart Scene Adaptive (AI SSA) detects and adjusts for fog, glare, low light and rain to ensure capture of clear video evidence.

- Stream up to 4.0MP (2688 x 1520) at 25fps
- H.265 encoding for efficient storage & streaming
- Up to 30m infrared range; true day/night (auto ICR)
- Back/highlight compensation & true WDR (120dB)
- MicroSD slot for recording at the edge up to 256GB
- AI weather and anti-flicker scene self-adaption
- Smart Motion Detection (SMD 4.0) for person detection (up to 12m) and vehicle detection (up to 18m)
- 3D digital noise reduction & auto white balance
- IP67 weather rated & IK10 vandal rated housing



Record 4.0MP in Real Time (25fps)



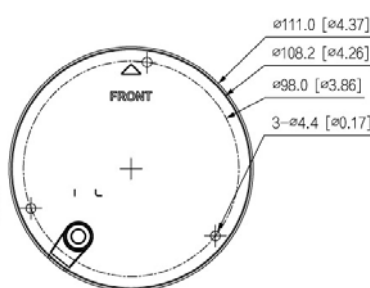
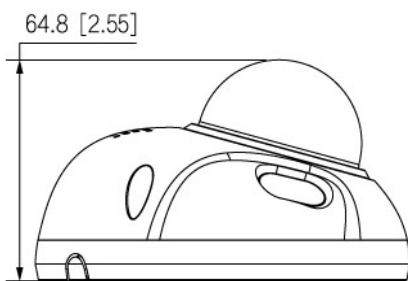
Smart Person & Vehicle Detection



AI Scene Adaptation

Specifications		4.0MP Fixed AI Wedge Dome	
Ordering Information		VSIPP-4DIRF-I2	
Camera	Image Sensor	1/3" 4.0MP Progressive Scan CMOS	
	Effective Pixels	2688 (H) x 1520 (V)	
	RAM / ROM	512MB / 128MB	
	Min Illumination	0.005 Lux/F1.4 (Color)	
	S/N Ratio	>56 dB	
	Infrared System	2 x Infrared LEDs, 30m range, Auto/manual on/off control	
Lens	Lens / Iris	2.8mm F1.4 Fixed Focal Lens with Fixed Iris	
	Field of View	Horizontal: 102°, Vertical: 54°, Diagonal: 121°	
	Focus	Auto Focus / 0.9m Min. Focus Distance	
DORI	Detect	64m	
	Observe	25m	
	Recognise	13m	
	Identify	6 m	
Video	Resolution	4.0MP (2688 x 1520) to CIF (352 x 288)	
	Frame Rate	Main	4.0MP (1 ~ 25fps)
		Sub	D1 (1 ~ 25fps)
		Third	1080p (1 ~ 25fps)
	Video Compression	H.265 / H.264 / H.264H / H.264B / MJPEG	
	Bit Rate	H.265: 3 ~ 8192Kbps / H.264: 3 ~ 8192Kbps	
	Bit Rate Control	Constant bit rate (CBR) / Variable bit rate (VBR)	
	Day/Night	Auto (ICR) / Color / B&W	
	Lighting Compensation	BLC / HLC / WDR (120dB) / AI SSA	
	White Balance	Auto / Natural / Street Lamp / Outdoor / Manual / Regional Custom	
	Gain Control	Auto	
Noise Reduction	3D DNR		
Picture Control	0°/90°/180°/270° (support 90°/270° with 4.0MP resolution and lower)		
IVS	Video Functions	Motion Detection (4 zones), Region of Interest (4 zones), Privacy Masking (4 zones), Smart Infrared	
	AI Functions	Smart Motion Detection (SMD 4.0): People and vehicle detection using motion detection Perimeter Protection: People and vehicle detection using tripwire or intrusion rules	
	Intelligent Search	Search people or vehicle detection events (SMD 4.0, Perimeter Protection)	
Network	Ethernet	RJ-45 (10/100Base-T)	
	Protocol	IPv4; IPv6; HTTP; TCP; UDP; ARP; RTP; RTSP; RTCP; RTMP; SMTP; FTP; SFTP; DHCP; DNS; DDNS; QoS; UPnP; NTP; Multicast; ICMP; IGMP; NFS; SAMBA; PPPoE; SNMP	
	Streaming Method	Multicast	
	Max. User Access	20 Users	
Interface	Video Interface	N/A	
	Audio Interface	1 input (RCA Port) / 1 output (RAC Port) / Built-in Mic / Audio Compression - G.711a; G.711Mu; G726; PCM	
	Alarm Interface	1 channel in: 5mA 3-5VDC / 1 channel out: 300mA 12VDC	
	Edge Storage	MicroSD Card (up to 256GB) / NAS / FTP / SFTP	
	Interoperability	ONVIF (Profile S/Profile G) / CGI / P2P / Milestone / Genetec	
Environmental	Power Supply	12VDC / PoE (802.3af)	
	Power Consumption	<7.2W	
	Operating Conditions	-40°C ~ +60°C / ≤95% RH	
	Ingress Protection	IP67	
	Vandal Resistance	IK10	
	Housing	Metal	
	Pan/Tilt/Rotation	Pan: -0° ~ 355°, Tilt: 20° ~ 70°, Rotation: 0° ~ 355°	
	Dimensions	Ø111.0mm x 64.8mm	
Net Weight	0.423kg		

Application



Application		Junction Box	Wall Mount
VSIP-4DIRF-I2	VSIPKA136		VSIPKB205W-E
		Pole Mount	
	VSIPKB205W-E + VSIPKA152E	VSIPKA136 + VSIPKA152E	VSIPKA109 + VSIPKB220C +
		Ceiling Mount	

Your local VIP Vision™ IP solutions professional:

Starlight Camera

AI People & Vehicle Detection



Intelligent AI auto-tracking

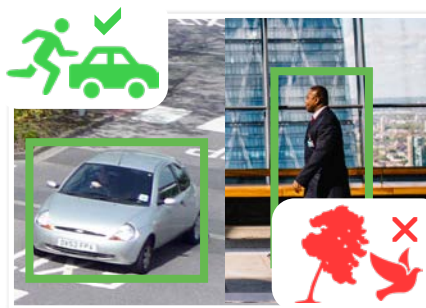
Pro AI Series: perimeter protection PTZ domes in 2.0MP, 4.0MP & 8.0MP

Offer a versatile surveillance experience and ensure all areas are covered with up to 32x optical zoom, auto-tracking and fast endless 360° panning. Experience impressive AI powered video analytics and filter false alarms with AI face detection and AI Perimeter Protection technology, providing meaningful video event notifications in real-time.

- Stream up to 8.0MP (3840 x 2160) at 25fps
- Up to 32x optical zoom lens (61.6°~2°.1 viewing angles)
- Low light colour performance at 0.005lx; 150m IR
- Endless 360° panning and -15° ~ 90° tilt adjustable
- MicroSD card slot for edge recording applications
- Perimeter Protection to identify people & vehicles
- Combine Perimeter Protection with Tripwire/Intrusion to prevent false alarms, all using any VIP Vision NVR
- Power by PoE+ (802.3at) or 24VAC (PSU included)
- IP67 weather rated, lightweight dome housing



Up to 4K Ultra HD Resolution



Smart Person & Vehicle Detection



Up to 32x Lossless Optical Zoom

Specifications		2.0MP 25x Zoom PTZ with AI	4.0MP 32x Zoom PTZ with AI	8.0MP 25x Zoom PTZ with AI	
Ordering Information		VSIPPTZ-2IRP-I2	VSIPPTZ-4IRP-I2	VSIPPTZ-8IRP-I2	
Camera	Image Sensor	1/2.8" 2.0MP Starvis™ CMOS	1/2.8" 4.0MP Starvis™ CMOS	1/1.8" 8.0MP Starvis™ CMOS	
	Effective Pixels	1920 (H) x 1080 (V)	2560 (H) x 1440 (V)	3840 (H) x 2160 (V)	
	RAM / ROM	1GB / 4GB			
	Min Illumination	0.005 Lux/F1.6 (Colour), 0.0005 Lux/ F1.6 (B/W)/, 0 Lux (IR Light On)	0.005 Lux/F1.35 (Colour), 0.0005 Lux/ F1.35 (B/W)/, 0 Lux (IR Light On)	0.005 Lux/F1.6 (Colour), 0.0005 Lux/ F1.6 (B/W)/, 0 Lux (IR Light On)	
	Infrared System	4 x Infrared LED, 150m range, Zoom Prio/Auto/Manual/Smart IR On/Off control			
Lens	Lens / Iris	4.8mm ~ 120mm F1.6 ~ F3.5 Motorised Lens	4.8mm ~ 154mm F1.35~ F4.4 Motorised Lens	5.4mm ~ 135mm F1.6 ~ F4.0 Motorised Lens	
	Field of View	58.7° ~ 2.8° (H), 33.2° ~ 1.5° (V), 67.5 ~ 3.2° (D) (25x Optical Zoom)	55.81° ~ 2.37° (H), 31.92° ~ 1.34° (V), 63.71° ~ 2.71° (D) (32x Optical Zoom)	61.6° ~ 3.6° (H), 35.7° ~ 2° (V), 66.6 ~ 4° (D) (25x Optical Zoom)	
	Focus	Auto/Semi-Auto/Manual / 0.1m ~ 1.5m Min. Focus Distance		Auto/Semi-Auto/Manual / 0.5m ~ 2m Min. Focus Distance	
DORI	Detect (25px/m)	1614m	2124m	2700m	
	Observe (63px/m)	646m	839m	1066m	
	Recognise (125px/m)	323m	425m	540m	
	Identify (250px/m)	161m	212m	270m	
PTZ	Pan / Tilt Range	Pan: 0° ~ 360° (endless) / Tilt: -15° ~ 90° / Auto Flip 180°			
	PTZ Speed	Preset: Pan: 400°/s; Tilt: 300°/s Manual: Pan: 300°/s; Tilt: 200°/s			
	Modes / Presets	Up to 300 presets / 5 Pattern, 8 Tour, 5 scanning, Auto Pan, Auto Scan			
	Start-up Action	Auto-restore to previous PTZ/lens status			
	Auto Tracking	Support			
Video	Resolution	1080p (1920 x 1080) to CIF (352 x 288)	4.0MP (2560 x 1440) to CIF (352 x 288)	8.0MP (3840 x 2160) to CIF (352 x 288)	
	Frame Rate	Main	1080p (1 ~ 25fps)	4.0MP (1 ~ 25fps)	8.0MP (1 ~ 25fps)
		Sub	D1(1 ~ 25fps)		
		Third	1080p (1 ~ 25fps)	720p (1 ~ 25fps)	1080p (1 ~ 25fps)
	Video Compression	H.265+ / H.265 / H.264+ / H.264 / MJPEG		H.265+ / H.265 / H.264+ / H.264 / H.264B / H.264H / MJPEG	
	Bit Rate	H.265/H.264: 3 kbps~20480 kbps		H.265/H.264: 51 kbps~16384 kbps	
	Bit Rate Control	Constant bit rate (CBR) / Variable bit rate (VBR)			
	Day/Night	Auto (ICR) / Color / B&W			
	Lighting Compensation	BLC / HLC / WDR (120dB)			
	White Balance	Auto / Indoor / Outdoor / Tracking / Manual / Sodium lamp / Natural light / Street lamp			
Gain Control	Auto / Manual				
Noise Reduction	2D / 3D DNR				
Picture Control	Flip 0°/180°				
IVS	Intelligent Functions	Abandoned/Missing Object, Motion Detection, Region of Interest, Electronic Image Stabilisation, Privacy Masking (24 zones), Defog			
	Perimeter Protection	Tripwire & Intrusion (Add recognition of humans & vehicles)			
	Intelligent Search	Via NVR Smart Search, Search tripwire/intrusion events by people or vehicle			
	SMD+	Filter motion detection alarms, recognises humans and vehicles from other moving objects			
	Metadata	Supports human, motor vehicles and non motor vehicle search. Supports face image capture and footage search by face image & facial attributes			
Network	Ethernet Protocol	RJ-45 (10/100Base-T)			
	Streaming Method	Unicast / Multicast			
	Max. User Access	20 Users			
	Audio Interface	1 Input / 1 Output / Compression: G.711A; G.711Mu; G.726; AAC; G.722.1; G.723; G.729; PCM; MPEG2-Layer2			
Interface	Alarm Interface	2 Inputs / 1 Output			
	RS485	N/A			
	Edge Storage	FTP; Micro SD card (256G); P2P			
	Interoperability	ONVIF Profile S&G&T; CGI			
	Power Supply	24VAC/3A (±25%) / PoE+ (802.3at)			
Environmental	Power Consumption	<13W / <22W (IR on)	<13W / <22W (IR on)	<12W / <21W (IR on)	
	Operating Conditions	-40° ~ +70° C / Less than 95% RH			
	Ingress Protection	IP67			
	Vandal Resistance	IK10			
	Surge Protection	TVS 6000V Lightning Protection / Surge Protection			
	Housing	Metal			
	Dimensions	Ø190mm x 332mm			
Net Weight	4.7kg				

Application							
Included Accessories	Wall Mount			Pole Mount		Ceiling Mount	Parapet Mount
VSBKTB305W (Wall Mount Bracket) + 24VAC/3A PSU	VSBKTB305W	VSBKTB305W + VSBKTA120	VSBKTB305W + VSBKTA140	VSBKTB305W + VSBKTA150	VSBKTA111 + VSBKTB300C + VSBKTA150	VSBKTA111 + VSBKTB300C + (+ VSBKTA112/13 optional extension)	VSBKTA111 + VSBKTB3035 +

Your local VIP Vision™ IP solutions professional:



Starlight
Camera



Face
Capture



AI People
& **Vehicle**
Detection



High mobility PTZ solution

Pro AI PTZ Series: 32x Optical Zoom Recessed speed dome available in 2.0MP

This ceiling-recessed mount network PTZ dome delivers lightning fast PTZ mobility, up to 25x optical zoom and auto-tracking, all in a vandal resistant body. Experience AI face detection & AI Perimeter Protection technology, providing meaningful video event notifications in real-time. Ideal for indoor, time critical applications such as in banks, retail, in gaming and more.

- Stream footage at FHD (1920x1080)/50fps
- Super responsive 500°/second pan and tilt speed
- True WDR (120dB) and colour low light at 0.005lx
- MicroSD slot for recording at the edge up to 256GB
- Endless 360° panning and 0° ~ 90° tilt adjustable
- Face detection & intelligent video analytic functions
- Auto-tracking, alarm I/O and audio I/O support
- IK10 vandal rated recessed ceiling mount housing



AI Auto-Tracking



32x Lossless Optical Zoom



AI-Enhanced Face Detection

Specifications		2.0MP 32x Zoom PTZ with AI	
Ordering Information		VSIPPTZ-2C-I	
Camera	Image Sensor	1/2.8" 2.0MP Starvis™ CMOS	
	Effective Pixels	1920 (H) x 1080 (V)	
	RAM / ROM	1GB / 4GB	
	Min Illumination	0.005 Lux/F1.35 (Colour), 0.0005 Lux/ F1.35 (B/W), 0 Lux (IR Light On)	
	Infrared System	4 x Infrared LED, 150m range, Zoom Prio/Auto/Manual/Smart IR On/Off control	
	Lens / Iris	4.9mm ~ 156mm F1.35 ~ F4.4 Motorised Lens	
Lens	Field of View	62.8° ~ 2.2° (H), 36.7° ~ 1.3° (V), 69.2° ~ 2.6° (D) (32x Optical Zoom)	
	Focus	Auto/Semi-Auto/Manual / 1m ~ 1.5m Min. Focus Distance	
DORI	Detect (25px/m)	2152m	
	Observe (63px/m)	850m	
	Recognise (125px/m)	430m	
	Identify (250px/m)	215m	
PTZ	Pan / Tilt Range	Pan: 0° ~ 360° (endless) / Tilt: 0° ~ 90° / Auto Flip 180°	
	PTZ Speed	Preset: Pan: 500°/s; Tilt: 500°/s Manual: Pan: 350°/s; Tilt: 250°/s	
	Modes / Presets	Up to 300 presets / 5 Pattern, 8 Tour, 5 scanning, Auto Pan, Auto Scan	
	Start-up Action	Auto-restore to previous PTZ/lens status	
	Auto Tracking	Support	
Video	Resolution	1080p (1920 x 1080) to CIF (352 x 288)	
	Frame Rate	Main	1080p (1 ~ 50fps)
		Sub	D1(1 ~ 25fps)
		Third	720p (1 ~ 25fps)
	Video Compression	H.265/H.264B/H.264M/H.264H/MJPEG/H.265+/H.264+	
	Bit Rate	H.265/H.264: 3 kbps-20480 kbps	
	Bit Rate Control	Constant bit rate (CBR) / Variable bit rate (VBR)	
	Day/Night	Auto (ICR) / Color / B&W	
	Lighting Compensation	BLC / HLC / WDR (120dB)	
	White Balance	Auto / Indoor / Outdoor / Tracking / Manual / Sodium lamp / Natural light / Street lamp	
Gain Control	Auto / Manual		
Noise Reduction	2D / 3D DNR		
Picture Control	Flip 0°/180°		
IVS	Intelligent Functions	Abandoned/Missing Object, Motion Detection, Region of Interest, Electronic Image Stabilisation, Privacy Masking (24 zones), Defog	
	Perimeter Protection	Tripwire & Intrusion (Add recognition of humans & vehicles)	
	Intelligent Search	Via NVR Smart Search, Search tripwire/intrusion events by people or vehicle	
	SMD+	Filter motion detection alarms, recognises humans and vehicles from other moving objects	
Metadata	Supports human, motor vehicles and non motor vehicle search. Supports face image capture and footage search by face image & facial attributes		
Network	Ethernet	RJ-45 (10/100Base-T)	
	Protocol	IPv4; IPv6; HTTP; HTTPS; 802.1x; Qos; FTP; SMTP; UPnP; SNMPv1/v2c/v3 (MIB-2); DNS; DDNS; NTP; RTSP; RTP; TCP; UDP; IGMP; ICMP; DHCP; PPPoE; ARP; RTCP	
	Streaming Method	Unicast / Multicast	
	Max. User Access	20 Users	
Interface	Audio Interface	1 Input / 1 Output / Compression: G.711A; G.711Mu; G.726; AAC; G.722.1; G.723; G.729; PCM; MPEG2-Layer2	
	Alarm Interface	2 Inputs / 1 Output	
	RS485	N/A	
	Edge Storage	FTP; Micro SD card (256G); P2P	
	Interoperability	ONVIF Profile S&G&T; CGI	
Environmental	Power Supply	24VAC/3A (±25%) / PoE+ (802.3at)	
	Power Consumption	<10W / <16W (IR on)	
	Operating Conditions	-30° ~ +60° C / Less than 95% RH	
	Ingress Protection	N/A	
	Vandal Resistance	IK10	
	Surge Protection	TVS 6000V Lightning Protection / Surge Protection	
	Housing	Metal	
	Dimensions	Ø186 mm x 253 mm (Ø160 mm hole cut)	
Net Weight	2.2kg		
Application			
Included Accessories			
24VAC/3A PSU			

Your local VIP Vision™ IP solutions professional:



Starlight
Camera



Face
Capture



AI People
& Vehicle
Detection



AI Auto
Tracking



Big AI features, compact size

Pro AI PTZ Series: 25x Optical Zoom PTZ Dome in 4.0MP

This network PTZ dome offers versatile surveillance and affordability without skipping on highlights of the Pro AI Series. Ensure all areas are covered with up to 25x optical zoom. Experience impressive AI with real-time face detection and AI Perimeter Protection technology, providing meaningful video event notifications in real-time.

- Stream up to 4.0MP (2560x1440) at 25fps
- Responsive 240°/s pan and 160°/s tilt speeds
- True WDR (120dB) and colour low light at 0.005lx
- Superb Infrared distance up to 100m
- MicroSD slot for recording at the edge up to 512GB
- Endless 360° panning and -5° ~ 90° tilt adjustable
- Face detection & intelligent video analytic functions
- Auto-tracking, alarm I/O and audio I/O support
- IP66 weather resistance

**AI auto-tracking activates only via people detection*



Smart Person & Vehicle Detection

25x



25x Lossless Optical Zoom



AI Auto-Tracking

Specifications		4.0MP 25x Zoom PTZ with AI	
Ordering Information		VSIPPTZ-4IRC-I	
Camera	Image Sensor	1/2.8" 4.0MP Starvis™ CMOS	
	Effective Pixels	2560 (H) x 1440 (V)	
	RAM / ROM	512MB / 128MB	
	Min Illumination	0.005 Lux/F1.6 (Colour), 0.0005 Lux/ F1.6 (B/W)/0 Lux (IR Light On)	
Lens	Infrared System	4 x Infrared LED, 150m range, Zoom Prio/Auto/Manual/Smart IR On/Off control	
	Lens / Iris	5mm ~ 125mm F1.6 ~ F3.6 Motorised Lens	
	Field of View	51.9° ~ 3.0° (H), 39.7° ~ 2.2° (V), 63.1° ~ 3.7° (D) (25x Optical Zoom)	
	Focus	Auto/Semi-Auto/Manual / 0.1m ~ 1.5m Min. Focus Distance	
DORI	Detect (25px/m)	2500m	
	Observe (63px/m)	987m	
	Recognise (125px/m)	500m	
	Identify (250px/m)	250m	
PTZ	Pan / Tilt Range	Pan: 0° ~ 360° (endless) / Tilt: -5° ~ 90° / Auto Flip 180°	
	PTZ Speed	Preset: Pan: 240°/s; Tilt: 160°/s Manual: Pan: 240°/s; Tilt: 160°/s	
	Modes / Presets	Up to 300 presets / 5 Pattern, 8 Tour, 5 scanning, Auto Pan, Auto Scan	
	Start-up Action	Auto-restore to previous PTZ/lens status	
	Auto Tracking	Support	
Video	Resolution	4.0MP (2560 x 1440) to CIF (352 x 288)	
	Frame Rate	Main	4.0MP (1 ~ 25fps)
		Sub	D1(1 ~ 25fps)
		Third	720p (1 ~ 25fps)
	Video Compression	H.265/H.264B/H.264M/H.264H/MJPEG/H.265+/H.264+	
	Bit Rate	H.265/H.264: 3 kbps-20480 kbps	
	Bit Rate Control	Constant bit rate (CBR) / Variable bit rate (VBR)	
	Day/Night	Auto (ICR) / Color / B&W	
	Lighting Compensation	BLC / HLC / WDR (120dB)	
	White Balance	Auto / Indoor / Outdoor / Tracking / Manual / Sodium lamp / Natural light / Street lamp	
	Gain Control	Auto / Manual	
Noise Reduction	2D / 3D DNR		
Picture Control	Flip 0°/180°		
IVS	Intelligent Functions	Abandoned/Missing Object, Motion Detection, Region of Interest, Electronic Image Stabilisation, Privacy Masking (24 zones), Defog	
	Perimeter Protection	Tripwire & Intrusion (Add recognition of humans & vehicles)	
	Intelligent Search	Via NVR Smart Search, Search tripwire/intrusion events by people or vehicle	
	SMD+	Filter motion detection alarms, recognises humans and vehicles from other moving objects	
	Metadata	Supports human, motor vehicles and non motor vehicle search. Supports face image capture and footage search by face image & facial attributes	
Network	Ethernet Protocol	RJ-45 (10/100Base-T)	
	Streaming Method	Unicast / Multicast	
	Max. User Access	20 Users	
	Audio Interface	1 Input / 1 Output / Compression: G.711A; G.711Mu; G.726; AAC; G.722.1; G.723; G.729; PCM; MPEG2-Layer2	
Interface	Alarm Interface	2 Inputs / 1 Output	
	RS485	N/A	
	Edge Storage	FTP; Micro SD card (256G); P2P	
	Interoperability	ONVIF Profile S&G&T; CGI	
Environmental	Power Supply	12VDC/3A (±25%) / PoE+ (802.3at)	
	Power Consumption	<9.5W / <21.5W (IR on)	
	Operating Conditions	-40° ~ +65° C / Less than 95% RH	
	Ingress Protection	IP66	
	Vandal Resistance	N/A	
	Surge Protection	TVS 6000V Lightning Protection / Surge Protection	
	Housing	Metal	
	Dimensions	Ø168 mm x 171.1 mm	
Net Weight	2.5kg		

Application

	Included Accessories	Pole Mount	Parapet Mount
	24VAC/3A PSU Wall Mount VSBKTB303W + VSBKTA101	VSBKTA101 + VSBKTB303W + VSBKTA150	Ceiling Mount VSBKTA101 + VSBKTB300C + (+ VSBKTA112/13 optional extension)

Your local VIP Vision™ IP solutions professional:

AI People & Vehicle Detection

Starlight Camera



4.0
MEGAPIXEL

Panoramic & AI combined.

Professional AI Series: AI panoramic mini bullet in 4.0MP

Capture entire scenes and perform the role of multiple cameras with the VIP Vision Panoramic Series. Control a 180-degree panorama with virtual PTZ functions to keep watch over driveways, parking lots and warehouse floors, even with low-light colour. Search playback and receive alerts with AI Person and Vehicle Detection modes, transforming the way you use your surveillance system.

- Stream up to 4.0MP (2688 x 1520) at 25fps
- 2.1mm panoramic lens for 170° field of view (Lens Distortion Control enabled; 180° when disabled)
- Back/highlight compensation & true WDR (120dB)
- 20m infrared range & virtual PTZ control
- Starlight sensor for superb low-light performance
- Intelligent AI detection to identify people & vehicles
- Smart Motion Detection (SMD+) & Perimeter Protection for AI alerts and to prevent false alarms
- MicroSD slot for recording at the edge up to 256GB
- 3D digital noise reduction & auto white balance
- IP67 weather rated housing for outdoor use

4MP 25fps
180° FOV
0.001lx

Superb Image Performance

180°

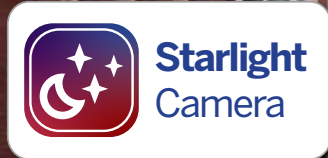
Wide-Angle View & Infrared

Smart Person & Vehicle Detection

Specifications		4.0MP AI Panoramic Bullet	
Ordering Information		VSIPP-4BIRW-I	
Camera	Image Sensor	1/2.7" 4.0MP Progressive Scan CMOS	
	Effective Pixels	2880 (H) x 1620 (V)	
	RAM / ROM	512MB / 128MB	
	Min Illumination	0.01 Lux / F1.6 (Color), 0.001 lux / F2.0 (B/W, 30 IRE), 0 lux (IR on)	
	S/N Ratio	> 56dB	
	Infrared System	3 x Infrared LED, 20m range, auto	
	Lens	Lens / Iris	2.1mm F2.0 Fixed Lens with Fixed Iris
Field of View		LDC (Lens Distortion Control), enabled by default Horizontal: 170°, Vertical: 75°, Diagonal: 175° Horizontal: 180°, Vertical: 78°, Diagonal: 180°	
Focus		Auto Focus / 0.6m Min. Focus Distance	
DORI	Detect (25px/m)	52m	
	Observe (63px/m)	21m	
	Recognise (125px/m)	10m	
	Identify (250px/m)	5m	
Video	Resolution	5.0 MP (2880 x 1620) / 4.0MP (2688 x 1520) to CIF (352 x 288)	
	Frame Rate	Main	5.0MP (1 ~ 20fps) / 4.0MP (1 ~ 25fps)
		Sub	D1 (1 ~ 25fps)
		Third	1080p (1 ~ 25fps)
	Video Compression	H.265/H.264/H.264H/H.264B/MJPEG	
	Bit Rate	H.264/H.265: 3 ~ 8192 kbps	
	Bit Rate Control	Constant bit rate (CBR) / Variable bit rate (VBR)	
	Day/Night	Auto (ICR) / Color / B&W	
	Lighting Compensation	BLC / HLC / WDR (120dB)	
	Smart Scene Adaptive	N/A	
	White Balance	Auto / Natural / Street Lamp / Outdoor / Manual / Regional Custom	
	Gain Control	Auto / Manual	
	Noise Reduction	3D NR	
	Picture Control	Mirror / Flip (0°, 90°, 180°, 270°) (4.0MP supports 90° & 270° at 1080p resolution)	
IVS	Intelligent Functions	Motion Detection (4 zones), Region of Interest (4 zones), Privacy Masking (8 areas), Smart Infrared, Abandoned Object, Moving Object	
	Perimeter Protection	Tripwire & Intrusion (Add recognition of humans & vehicles), Fast Moving Detection, Loitering Detection, Parking & Gathering Detection	
	Face Detection	N/A	
	Face Attributes	N/A	
	People Counting	N/A	
	Heat Map	N/A	
	Event Trigger	Motion Detection, Video Tampering, Scene Changing, Network Disconnection, IP Address Conflict, Illegal Access	
Intelligent Search	Via NVR Smart Search / Search tripwire/intrusion events by people or vehicle, Search footage by face image and face attributes		
Network	Ethernet	RJ-45 (10/100Base-T)	
	Protocol	IPv4; IPv6; HTTP; HTTPS; TCP; UDP; ARP; RTP; RTSP; RTCP; RTMP; SMTP; FTP; SFTP; DHCP; DNS; DDNS; QoS; UPnP; NTP; Multicast; ICMP; IGMP; NFS; SAMBA; PPPoE; 802.1x; SNMP	
	Streaming Method	Multicast	
	Max. User Access	20 Users	
Interface	Video Interface	N/A	
	Audio Interface	1 input (RCA Port), 1 output (RCA Port) / Audio Compression: G.711a; G.711Mu; G.726; G.723	
	Alarm Interface	1 channel in: 5mA 3VDC / 1 channel out: 1000mA 30VDC or 500mA 50V DC	
	RS485	N/A	
	Edge Storage	MicroSD Card (up to 256GB) / NAS / FTP / SFTP	
	Interoperability	ONVIF / P2P / CGI	
Environmental	Power Supply	12VDC / PoE (802.3af)	
	Power Consumption	<6.5W	
	Operating Conditions	-40°C ~ +60°C, ≤95% RH	
	Ingress Protection	IP67	
	Vandal Resistance	N/A	
	Housing	Metal	
	Pan/Tilt/Rotation	Pan: 0° ~ 360°, Tilt: 0° ~ 90°, Rotation: 0° ~ 360°	
	Dimensions	249.3 mm x 90.7 mm x 90.4 mm	
Net Weight	820g		

Applications		
Wall Mount	Junction Box	Pole Mount
VSBKTA135	VSBKTA135 or VSBKTA130E	VSBKTA135 + VSBKTA152E

Your local VIP Vision™ IP solutions professional:



VIP
VISION

4.0
MEGAPIXEL

Panoramic & AI combined.

Professional AI Series: AI panoramic vandal dome in 4.0MP

Capture entire scenes and perform the role of multiple cameras with the VIP Vision Panoramic Series. Control a 180-degree panorama with virtual PTZ functions to keep watch over driveways, parking lots and warehouse floors, even with low-light colour. Search playback and receive alerts with AI Person and Vehicle Detection modes, transforming the way you use your surveillance system.

- Stream up to 4.0MP (2688 x 1520) at 25fps
- 2.1mm panoramic lens for 170° field of view (Lens Distortion Control enabled; 180° when disabled)
- Back/highlight compensation & true WDR (120dB)
- 15m infrared range & virtual PTZ control
- Starlight sensor for superb low-light performance
- Intelligent AI detection to identify people & vehicles
- Smart Motion Detection (SMD+) & Perimeter Protection for AI alerts and to prevent false alarms
- MicroSD slot for recording at the edge up to 256GB
- 3D digital noise reduction & auto white balance
- IP67 weather & IK10 vandal rated for outdoor use



Superb Image Performance



Wide-Angle View & Infrared



Smart Person & Vehicle Detection

Specifications		4.0MP AI Panoramic Dome	
Ordering Information		VSIPP-4DIRW-I	
Camera	Image Sensor	1/2.7" 4.0MP Progressive Scan CMOS	
	Effective Pixels	2880 (H) x 1620 (V)	
	RAM / ROM	512MB / 128MB	
	Min Illumination	0.01 Lux / F1.6 (Color), 0.001 lux / F2.0 (B/W, 30 IRE), 0 lux (IR on)	
	S/N Ratio	> 56dB	
	Infrared System	2 x Infrared LED, 15m range, auto	
Lens	Lens / Iris	2.1mm F2.0 Fixed Lens with Fixed Iris	
	Field of View	LDC (Lens Distortion Control), enabled by default Horizontal: 170°, Vertical: 75°, Diagonal: 175° Horizontal: 180°, Vertical: 78°, Diagonal: 180°	
	Focus	Auto Focus / 0.6m Min. Focus Distance	
DORI	Detect (25px/m)	52m	
	Observe (63px/m)	21m	
	Recognise (125px/m)	10m	
	Identify (250px/m)	5m	
Video	Resolution	5.0 MP (2880 x 1620) / 4.0MP (2688 x 1520) to CIF (352 x 288)	
	Frame Rate	Main	5.0MP (1 ~ 20fps) / 4.0MP (1 ~ 25fps)
		Sub	D1 (1 ~ 25fps)
		Third	1080p (1 ~ 25fps)
	Video Compression	H.265/H.264/H.264H/H.264B/MJPEG	
	Bit Rate	H.264/H.265: 3 ~ 8192 kbps	
	Bit Rate Control	Constant bit rate (CBR) / Variable bit rate (VBR)	
	Day/Night	Auto (ICR) / Color / B&W	
	Lighting Compensation	BLC / HLC / WDR (120dB)	
	Smart Scene Adaptive	N/A	
	White Balance	Auto / Natural / Street Lamp / Outdoor / Manual / Regional Custom	
	Gain Control	Auto / Manual	
	Noise Reduction	3D NR	
	Picture Control	Mirror / Flip (0°, 90°, 180°, 270°) (4.0MP supports 90° & 270° at 1080p resolution)	
IVS	Intelligent Functions	Motion Detection (4 zones), Region of Interest (4 zones), Privacy Masking (8 areas), Smart Infrared, Abandoned Object, Moving Object	
	Perimeter Protection	Tripwire & Intrusion (Add recognition of humans & vehicles), Fast Moving Detection, Loitering Detection, Parking & Gathering Detection	
	Face Detection	N/A	
	Face Attributes	N/A	
	People Counting	N/A	
	Heat Map	N/A	
	Event Trigger	Motion Detection, Video Tampering, Scene Changing, Network Disconnection, IP Address Conflict, Illegal Access	
Network	Intelligent Search	Via NVR Smart Search / Search tripwire/intrusion events by people or vehicle, Search footage by face image and face attributes	
	Ethernet	RJ-45 (10/100Base-T)	
	Protocol	IPv4; IPv6; HTTP; HTTPS; TCP; UDP; ARP; RTP; RTSP; RTCP; RTMP; SMTP; FTP; SFTP; DHCP; DNS; DDNS; QoS; UPnP; NTP; Multicast; ICMP; IGMP; NFS; SAMBA; PPPoE; 802.1x; SNMP	
	Streaming Method	Multicast	
Interface	Max. User Access	20 Users	
	Video Interface	N/A	
	Audio Interface	1 input (RCA Port), 1 output (RCA Port) / Audio Compression: G.711a; G.711Mu; G.726; G.723	
	Alarm Interface	1 channel in: 5mA 3VDC / 1 channel out: 1000mA 30VDC or 500mA 50V DC	
	RS485	N/A	
	Edge Storage	MicroSD Card (up to 256GB) / NAS / FTP / SFTP	
	Interoperability	ONVIF / P2P / CGI	
Environmental	Power Supply	12VDC / PoE (802.3af)	
	Power Consumption	<7.7W	
	Operating Conditions	-40°C ~ +60°C, ≤95% RH	
	Ingress Protection	IP67	
	Vandal Resistance	IK10	
	Housing	Metal	
	Pan/Tilt/Rotation	Pan: 0° ~ 355°, Tilt: 0° ~ 80°, Rotation: 0° ~ 355°	
Dimensions	Ø122.0 mm x 94 mm		
Net Weight	550 g		

Applications			
Wall Mount	Junction Box	Pole Mount	Ceiling Mount
VSBKT203W	VSBKTA137	VSBKT203W + VSBKTA152E	VSBKT220C

Your local VIP Vision™ IP solutions professional: